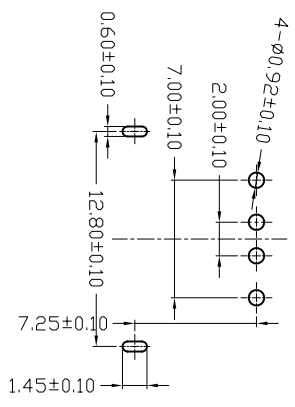
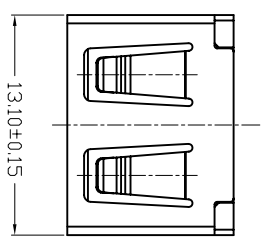


MAPX	MODIFICATION	DATE
------	--------------	------

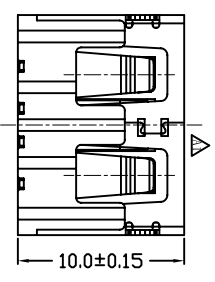
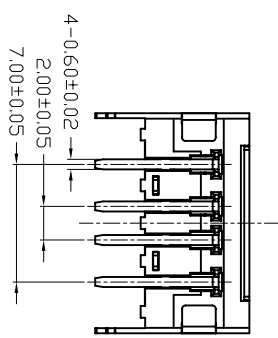
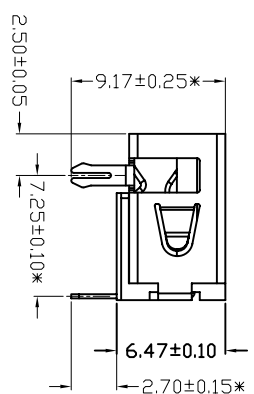
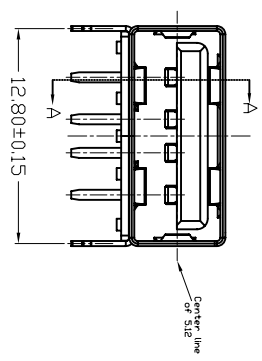
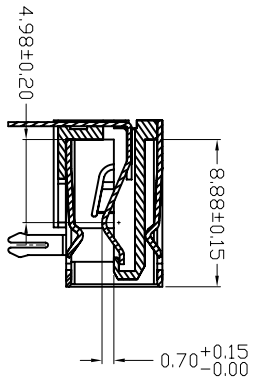
NOTES:
 1. HOUSING: SEE NOTES,
 TERMINAL: SEE NOTES,
 SHELL: SEE NOTES.

SPECIFICATION:

- ELECTRICAL CHARACTERISTIC:
 CONTACT RESISTANCE: 30MΩ MAX
 DIELECTRIC WITHSTANDING VOLTAGE: 500V AC FOR 1MIN
 INSULATION RESISTANCE: 1000MΩ MIN
- MECHANICAL CHARACTERISTIC:
 INSERTION FORCE: 35N(3.57KG) MAX
 EXTRACTION FORCE: 10.35N(1.02*3.57KG) MIN
 DURABILITY: 1500 CYCLES EXTRACTION FORCE: 10*35N
 3000 CYCLES MIN
 5000 CYCLES EXTRACTION FORCE: 3*35N
- ENVIRONMENTAL:
 OPERATING TEMPERATURE: -55°C~+85°C
- OPERATING TEMPERATURE:
 01: Selective Gold Flash
 02: Selective Gold 3U"
 03: Selective Gold 5U"
 04: Selective Gold 15U"
 05: Selective Gold 30U"



FRONT EDGE OF CONNECTOR
PCB LAYOUT



产品图
PRODUCT CHART DWG

公差一览表 TOLERANCE UNLESS OTHERWISE		单位 UNITS	制图 DRAWING	制图料号 PRODUCT PART NO
X	±0.25	X	±5.°	
X	±0.20	X	±2.°	
XX	±0.15	XX	±1.°	
XXX	±0.10	XXX	±0.5°	
		日期 DATE	2012.06.15	
		比例 SCALE	1:1	
		核准 APPD		
		角法 VIEW		
		版本 VER		

