

## 电气性能参数

NOTE:

1. MATERIAL:

- 1.1 INSULATOR:LCP UL 94V-0
- 1.2 CONTACT:BRONZE(T=0.20mm)
- 1.3 SHELL:BRASS(T=0.30mm)

2. ELECTRICAL CHARACTERISTICS:

- 2.1 CONTACT RESISTANCE:30mΩ MAXIMUM
- 2.2 CONTACT CURRENT RATING:1.5A
- 2.3 DIELECTRIC WITHSTANDING VOLTAGE:500 V R. M. S.
- 2.4 INSULATION RESISTANCE 1000 MEGOHMS MIN
- 2.5 OPERATING TEMPERATURE:-40° C ~ 85° C

3 MECHANICAL CHARACTERISTICS:

- 3.1 MATING FORCE:3.57kg MAX
- 3.2 UNMATED FORCE:1.02kg MIN
- 3.3 DURABILITY:MANDATORY:5,000 CYCLES

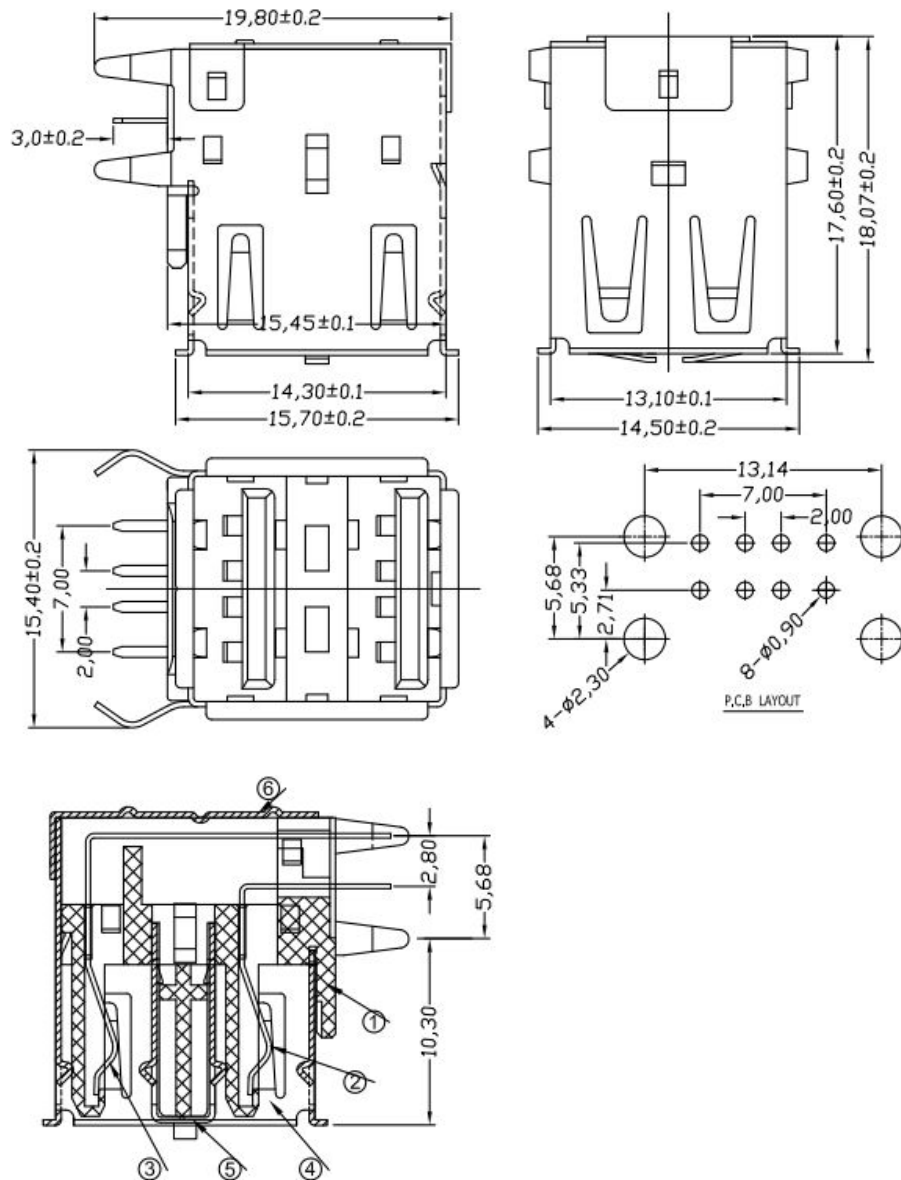
4. PLATING

4.1 TERMINAL:

- 50u" MIN NICKEL ALL OVER
- 100u"MIN Tin ON SOLDER AREA
- (1~30)u"Au ON CONTACT AREA

4.2 SHELL:100u"MIN.NICEL ALL OVER

# 产品尺寸



## Specifications:

- 1.1 Current rating: 1 A Max.
- 1.2 Dielectric withstanding voltage: 500 V(ac) for 1 minute.
- 1.3 Contact resistance: 30mΩ Max.
- 1.4 Insulation resistance: 1000MΩ Min at DC 500V
- 1.5 Total mating force: 4.0 Kgf Max.
- 1.6 Total unmating force: 1.0 Kgf Min.
- 1.7 Temperature range: -55℃~+105℃.
- 1.8 How to order:

EV-USBD04BAFX03-0X

W:白色  
B:黑色

1:GOLD FLASH  
2:GOLD 5U"  
3:GOLD 15U"  
4:GOLD 30U"

# 产品图片

