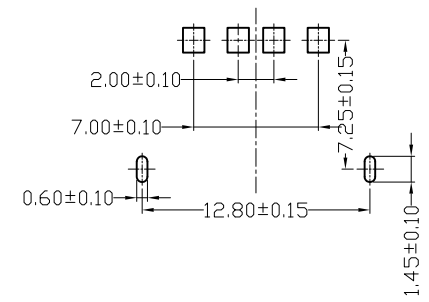
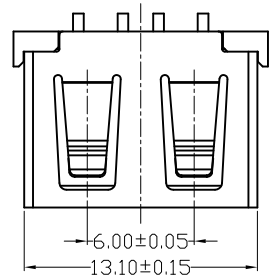
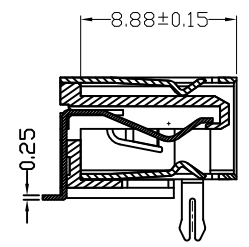


|      |              |      |
|------|--------------|------|
| MAPX | MODIFICATION | DATE |
|      |              |      |

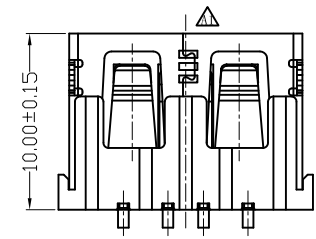
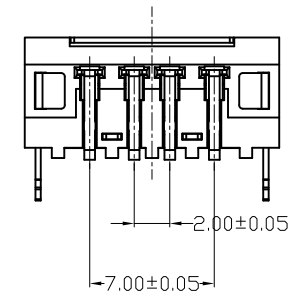
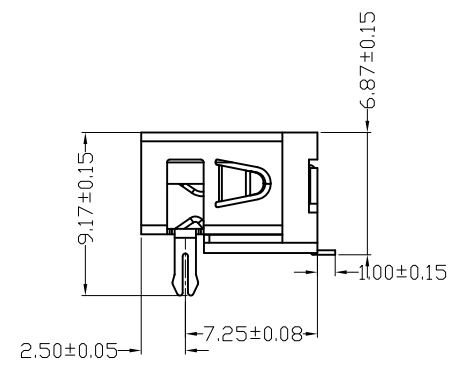
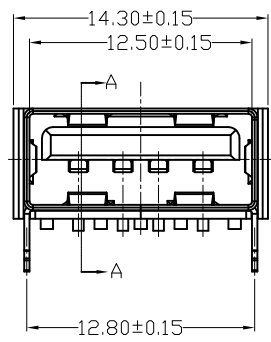
NOTES:  
 1. HOUSING: SEE NOTES,  
 TERMINAL: SEE NOTES,  
 SHELL: SEE NOTES.  
 SPECIFICATION:  
 1. ELECTRICAL CHARACTERISTIC:  
 CONTACT RESISTANCE: 30MΩ MAX  
 DIELECTRIC WITHSTANDING VOLTAGE: 500V AC FOR 1MIN  
 INSULATION RESISTANCE: 1000MΩ MIN  
 2. MECHANICAL CHARACTERISTIC:  
 INSERTION FORCE: 35N(3.57KGF) MAX  
 EXTRACTION FORCE: 10~35N(1.02~3.57KGF)MIN  
 DURABILITY: 1500 CYCLES EXTRACTION FORCE:10~35N  
 3000 CYCLES MIN  
 5000 CYCLES EXTRACTION FORCE:3~35N  
 3. ENVIRONMENTAL:  
 OPERATING TEMPERATURE: -55°C+85°C  
 4. Contact finish:  
 01:Selective Gold Flash  
 02:Selective Gold 3U"  
 03:Selective Gold 5U"  
 04:Selective Gold 15U"  
 05:Selective Gold 30U"



FRONT EDGE OF CONNECTOR  
PCB LAYOUT



SECTION A-A



|                                     |       |      |       |             |  |            |               |       |                          |           |  |    |
|-------------------------------------|-------|------|-------|-------------|--|------------|---------------|-------|--------------------------|-----------|--|----|
| 产品图<br>PRODUCT CHART DWG            |       |      |       | 单位<br>UNITS |  | MM         | 制图<br>DRAWING | Z-Y-B | 制图料号<br>PRODUCT PART NO. | 版本<br>VER |  | AD |
| 公差一览表<br>TOLERANCE UNLESS OTHERWISE |       |      |       | 比例<br>SCALE |  | 1:1        | 审核<br>CHKD    |       | 产品名称<br>PRODUCT NAME     | C42496    |  |    |
| X.                                  | ±0.25 | X.   | ±5.°  | 日期<br>DATE  |  | 2012.06.15 | 核准<br>APPD    |       | 角法<br>VIEW               |           |  |    |
| .X                                  | ±0.20 | .X   | ±2.°  |             |  |            |               |       |                          |           |  |    |
| .XX                                 | ±0.15 | .XX  | ±1.°  |             |  |            |               |       |                          |           |  |    |
| .XXX                                | ±0.10 | .XXX | ±0.5° |             |  |            |               |       |                          |           |  |    |