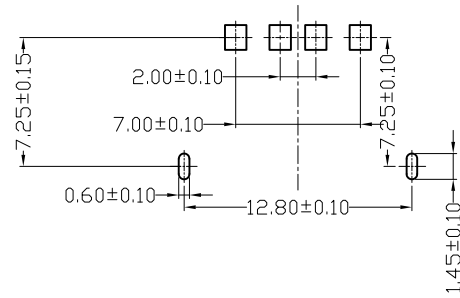
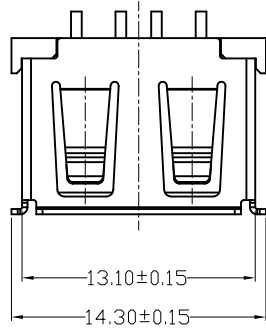


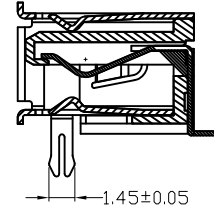
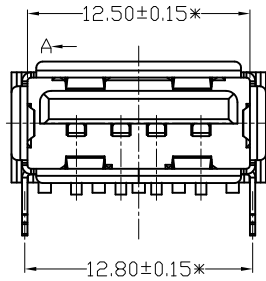
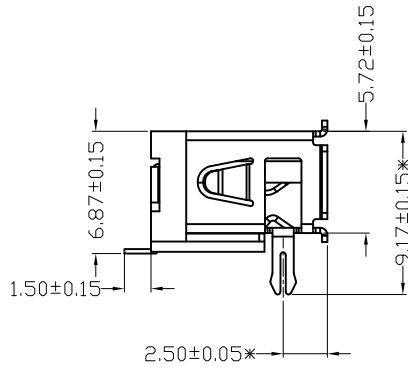
MAPX	MODIFICATION	DATE



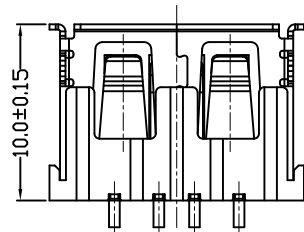
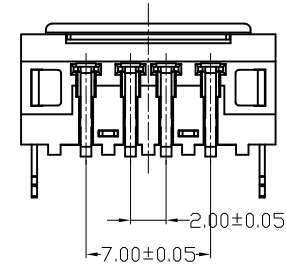
FRONT EDGE OF CONNECTOR
PCB LAYOUT

NOTES:

- HOUSING: SEE NOTES,
TERMINAL: SEE NOTES,
SHELL: SEE NOTES.
- SPECIFICATION:
 - ELECTRICAL CHARACTERISTIC:
CONTACT RESISTANCE: 30MΩ MAX
DIELECTRIC WITHSTANDING VOLTAGE: 500V AC FOR 1MIN
INSULATION RESISTANCE: 1000MΩ MIN
 - MECHANICAL CHARACTERISTIC:
INSERTION FORCE: 35N(3.57KGF) MAX
EXTRACTION FORCE: 10~35N(1.02~3.57KGF)MIN
DURABILITY: 1500 CYCLES EXTRACTION FORCE:10~35N
3000 CYCLES MIN
5000 CYCLES EXTRACTION FORCE:3~35N
 - ENVIRONMENTAL:
OPERATING TEMPERATURE: -55°C+85°C
 - Contact finish:
01:Selective Gold Flash
02:Selective Gold 3U"
03:Selective Gold 5U"
04:Selective Gold 15U"
05:Selective Gold 30U"



SECTION A-A



<p>产品图 PRODUCT CHART DWG</p>									
<p>公差一览表 TOLERANCE UNLESS OTHERWISE</p>				单位 UNITS	MM	制图 DRAWING	Z-Y-B	制图料号 PRODUCT PART NO.	
X.	±0.25	X.	±5.°	比例 SCALE	1:1	审核 CHKD		产品名称 PRODUCT NAME	C42509
.X	±0.20	.X	±2.°	日期 DATE	2012.06.15	核准 APPD		角法 VIEW	⊕
.XX	±0.15	.XX	±1.°					版本 VER	AD
.XXX	±0.10	.XXX	±0.5°						