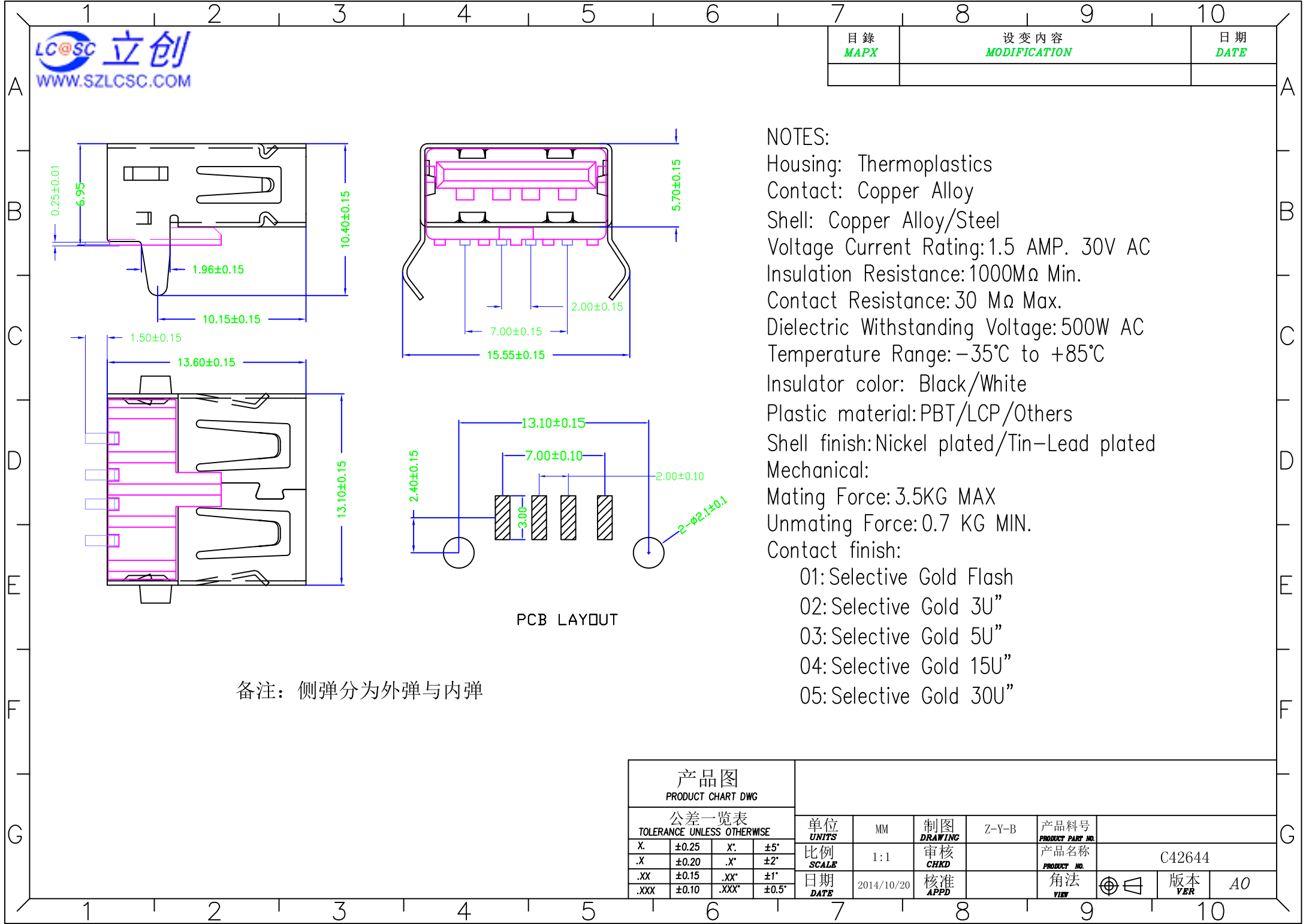


目錄 MAPX	設變內容 MODIFICATION	日期 DATE
------------	----------------------	------------



NOTES:  
Housing: Thermoplastics  
Contact: Copper Alloy  
Shell: Copper Alloy/Steel  
Voltage Current Rating: 1.5 AMP. 30V AC  
Insulation Resistance: 1000MΩ Min.  
Contact Resistance: 30 MΩ Max.  
Dielectric Withstanding Voltage: 500V AC  
Temperature Range: -35°C to +85°C  
Insulator color: Black/White  
Plastic material: PBT/LCP/Others  
Shell finish: Nickel plated/Tin-Lead plated  
Mechanical:  
Mating Force: 3.5KG MAX  
Unmating Force: 0.7 KG MIN.  
Contact finish:  
01: Selective Gold Flash  
02: Selective Gold 3U"  
03: Selective Gold 5U"  
04: Selective Gold 15U"  
05: Selective Gold 30U"

备注：侧弹分为外弹与内弹

PCB LAYOUT

产品图 PRODUCT CHART DWG									
公差一览表 TOLERANCE UNLESS OTHERWISE				单位 UNITS	MM	制图 DRAWING	Z-Y-B	产品料号 PRODUCT PART NO.	
X.	±0.25	X'	±5°	比例 SCALE	1:1	审核 CHKD		产品名称 PRODUCT NO.	C42644
.XX	±0.15	.XX'	±1°	日期 DATE	2014/10/20	核准 APPD		角法 VIEW	角法
.XXX	±0.10	.XXX'	±0.5°					版本 VER	A0