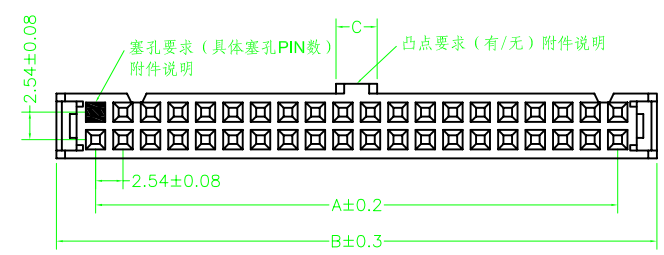
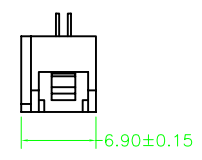
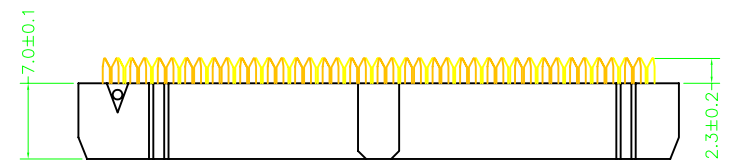
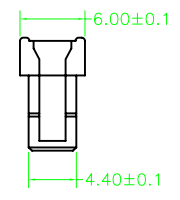
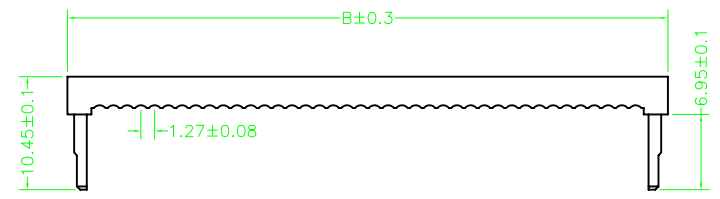
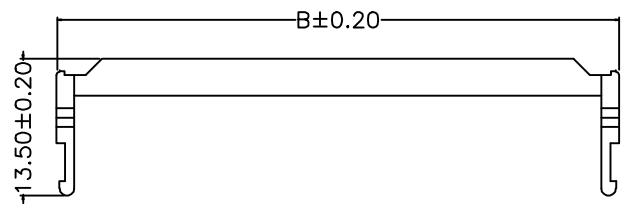


REV.	DESCRIPTION	DATE
A	RELEASE	2007.3.18



MATERIAL&FINISH  
 Insulator: PBT Glass Fiber(UL94V-0)  
 Contact : Brass  
 Contact : Gold-Plated Over Nickel.  
 SPECIFICATIONS  
 Current Rating :1A AC,DC  
 Voltage Rating : 250V AC,DC  
 Temperature Range:-40°C To+105°C  
 Contact Resistance:20mΩ Min  
 Insulation Resistance:1000MΩ Min  
 Withstanding Voltage:500V AC/Min

PART NO	Dim. A	Dim. B	Dim. C
FC-6P	5.08	12.32	1.9
FC-8P	7.62	14.86	1.9
FC-10P	10.16	17.40	3.8
FC-12P	12.7	19.94	3.8
FC-14P	15.24	22.48	3.8
FC-16P	17.78	25.02	3.8
FC-18P	20.32	27.56	3.8
FC-20P	22.86	30.10	3.8
FC-24P	27.94	35.18	3.8
FC-26P	30.48	37.72	3.8
FC-28P	33.02	40.26	3.8
FC-30P	35.56	42.80	3.8
FC-34P	40.64	47.88	3.8
FC-40P	48.26	55.5	3.8
FC-50P	60.96	68.20	3.8
FC-60P	73.66	80.90	3.8
FC-64P	78.74	85.98	3.8

UNLESS TOLERANCE		DRAW BY	YUAN		ITEM :
GENERAL	ANGLE	DESIGN BY	2007.3.18		
X. ± 0.30	X.' ± 3.0'	CHECK BY			
.X ± 0.20	.X' ± 2.0'	APPROVE BY			
.XX ± 0.15	.XX' ± 1.0'	SCALE	SHEET	UNIT	DRW NO: FC-XP
.XXX ± 0.08	.XXX' ± 0.5'	1:1	1/1	MM	