

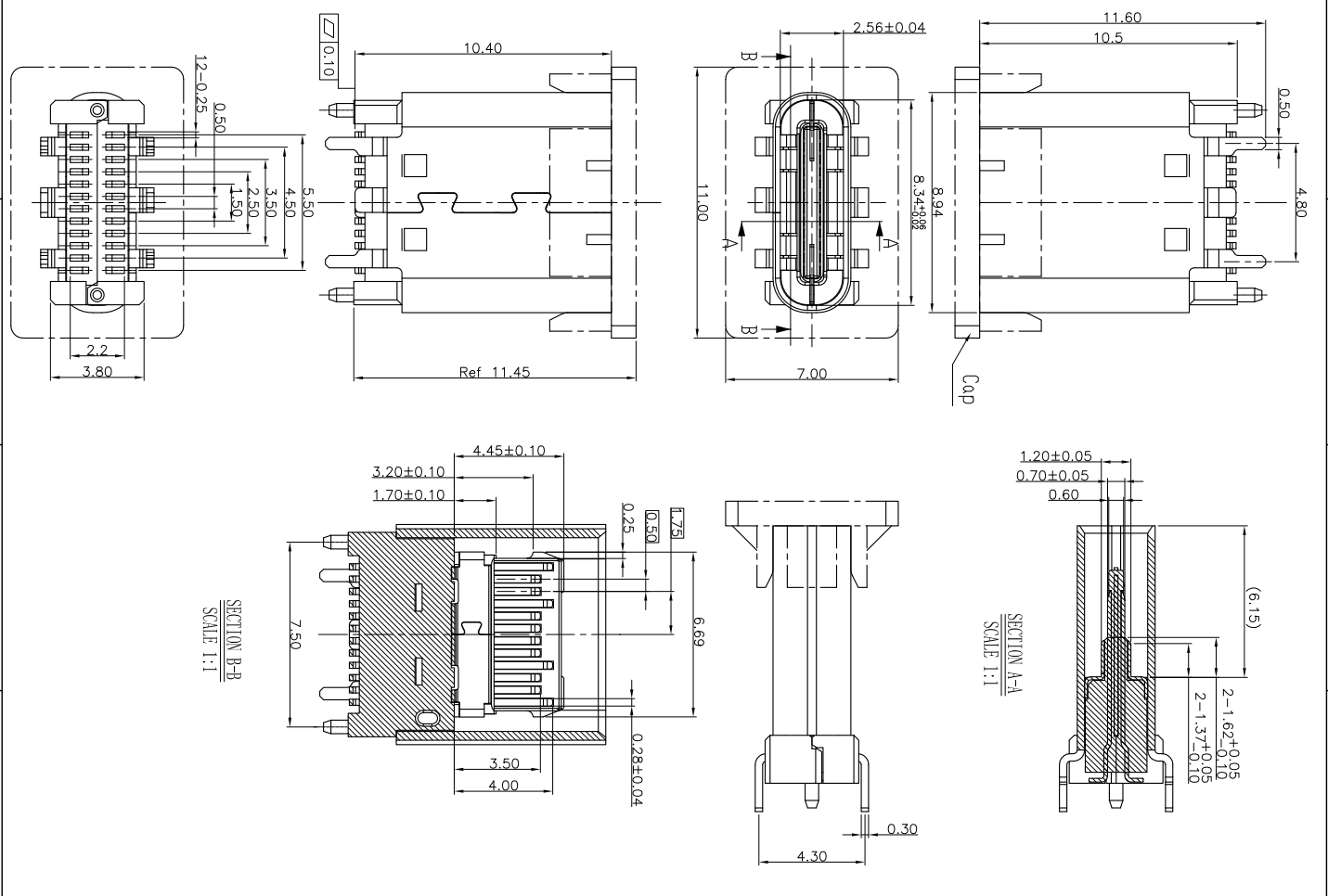
REV.	ECN. NO.	NAME	DATE
X2	NEW	CLY	2015/06/10

NOTES:  
 1. MATERIAL:  
 MOLDING: LCP UL94 V-0  
 CONTACT: COPPER ALLOY.  
 GOLD PLATED 30u" Min ON CONTACT AREA, 100u" Min ON CONTACT AREA, 100u" Min ON SOLDER AREA,  
 SHELL: SUS304-H,T=0.30±0.03mm  
 50u" NICKEL PLATING OVER ALL.  
 SHILD: SUS304-H,T=0.12±0.03mm

2. MECHANICAL:  
 INSERTION: 5~20N.  
 EXTRACTION: 8~20N.  
 DURABILITY: 10000 CYCLES

3. ELECTRICAL:  
 CURRENT: 5A MIN FOR VBUS;  
 0.25A MIN FOR OTHER.  
 VOLTAGE: 5VAC MAX  
 WITHSTANDING VOLTAGE: 100V AC.  
 CONTACT RESISTANCE: 40mΩ MAX.  
 INSULATION RESISTANCE: 100MΩ MIN.

4. ENVIRONMENTAL  
 TEMPERATURE RANGE -55°C ~ +85°C



DRAWN BY:		SIZE: A4	UNIT: mm.	PART NO. FUCR-244X-04XX
CHECKED BY:		SCALE: 1:1	PROJECTION	REV.: X2
APPROVED BY:		DWG. PATH		SHEET: 1/4

TOLEANCE (UNSPECIFIED)  
 .0 ±0.50  
 .00 ±0.38  
 .000 ±0.25  
 ANGLE ±0.10  
 ±3.00°  
 MANUFACTURING COPY

TITLE: USB 3.1 C TYPE FEMALE STRAIGHT CONNECTOR

端子形态:  
 1: RIGHT ANGLE DIP  
 2: STRAIGHT DIP  
 3: RIGHT ANGLE SMT  
 4: STRAIGHT SMT  
 5: SMD (表面贴)

包装:  
 T: TAP (端子)  
 U: TUBE (管)  
 R: TAPE & REEL (卷)

颜色:  
 B: BLACK  
 N: NATURE

Series No.  
 K: GOLD FLASH PLATING ON CONTACT AREA  
 M: Matte Tin PLATING ON SOLDER AREA  
 P: 15u" GOLD PLATING ON CONTACT AREA  
 U: 30u" GOLD PLATING ON CONTACT AREA Matte Tin PLATING ON SOLDER AREA

RoHS Compliant