

MAPX	MODIFICATION	DATE
------	--------------	------

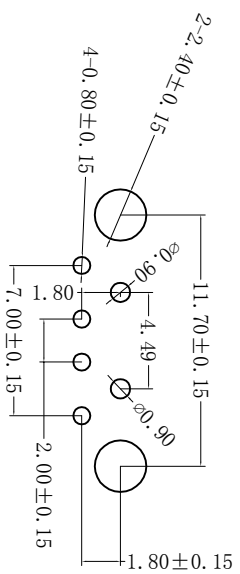
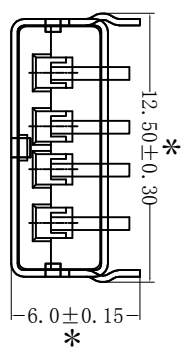
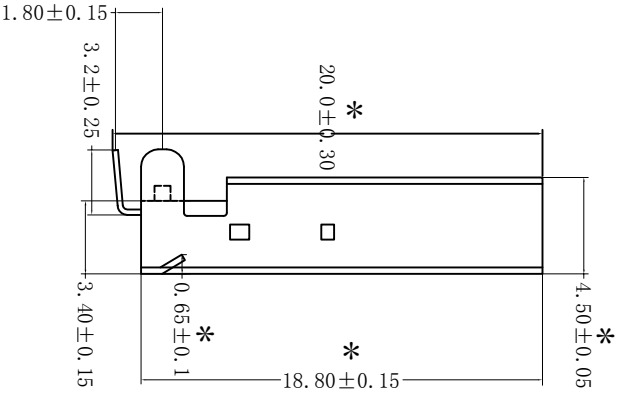
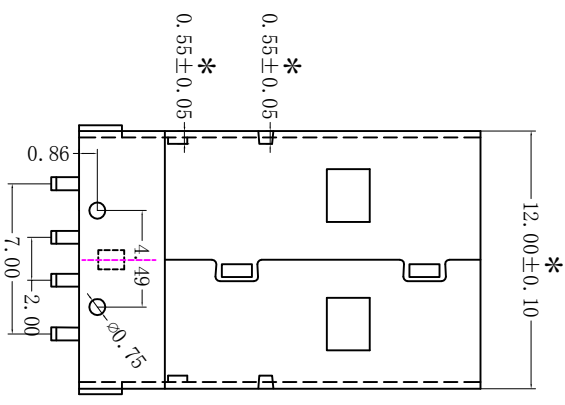
产品规格说明: (Specifications)
 电器特性: (Electrical characteristics)

- 最大值30毫欧: (30 milliohms MAX)
- 2. 耐电压: (Dielectric Withstanding Voltage:)
500 伏特交流电 (500V AC AT Sea Level)
- 3. 绝缘阻抗: (Insulation Resistance:)
最小值1000兆欧姆 (1000 mega-ohms MIN)

材料: Material:

- 1. 塑胶: (Housing) : High Temperature Inertplastics, U1 94V-0
 - :Black :White :其它
 - :PBT :耐高温塑胶 LCP :其它
 - 2. 端子: (Contact) : C2680 C5191
 - 3. 外壳: (Shell) : C2680 SPCC-SD SPCC-SB
- 电镀: (Finish) :
 1. 端子: (Contact) : Plated Gold in Mating Area:
Tin On Solder Tails
 接触点镀金 1u" 3u" 5u" 15u" 30u" 脚镀锡。
 2. 外壳: (Shell): Nickel Plating 镀亮镍

注明: 1. 标示编号为*重点检测尺寸. 图纸部分仅供参考, 因技术改良, 客户不同需求, 部分细节会与实物有区别, 请以实物为准。



RECOMMENDED P.C.B LAYOUT

产品图 PRODUCT CHART DWG		公差一览表 TOLERANCE UNLESS OTHERWISE		单位 UNITS	MM	制图 DRAWING	Z-Y-B	产品料号 PRODUCT PART NO.	A公90度 (有定位柱)	
X	±0.25	X.	±5'	比例 SCALE	1:1	审核 CHECK	雷永键	产品名称 PRODUCT NA.		
.XX	±0.15	.XX'	±2'	日期 DATE	2013/10/20	核准 APPD	雷永键	角法 TYP	版本 VER	A0
.XXX	±0.10	.XXX'	±0.5'							