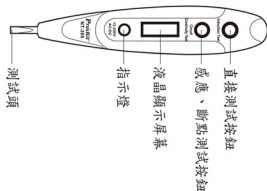


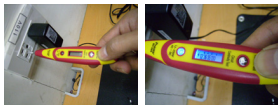
1. 外觀說明：



2. 功能說明：

A. 電壓值測試 (接觸式)：

AC 電壓測試 (110V-220V)：以手指按壓『直接測試按鈕』，並將測試頭接觸 AC 電源插頭或測試物，此時指示燈會亮起，液晶顯示屏會顯示測試的電壓值。



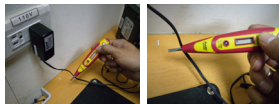
DC 電壓測試 (12~55V)：以手指按壓『直接測試按鈕』，並將測試頭接觸 DC 電源或測試物的正極端，負極端以手拿住或直接按壓於『直接測試按鈕』(成爲一個迴路)，此時指示燈會亮起，液晶顯示屏會顯示測試的電壓值。



- *顯示為 12，表示電壓介於 9~12V 間。
- *顯示為 12-36，表示電壓介於 12~36V 間。
- *顯示為 36-55，表示電壓介於 36~55V 間。
- *顯示為 12-36-55-110，表示電壓介於 55~110V 間 220V 以下。
- *顯示為 220V，表示電壓值於 220V 以上。

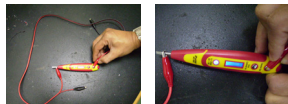
B. 線路感應測試 (非接觸式)：

以手指按壓『感應、斷點測試按鈕』，並將測試頭靠近電源線，液晶顯示屏的左側若顯示閃電符號，表示此線路正常通電；若未出現閃電符號，表示此線路不帶電源。



C. 線材導通測試：

將線材的一端與測試頭接觸，線材另外一端與直接測試按鈕接觸，進行導通測試。

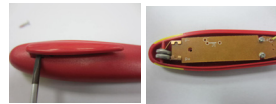


指示燈亮起，表示線材導通，指示燈不亮，則表示線材有斷點。

D. 驗電筆自我檢測：

以雙手同時按壓『直接測試按鈕』及測試頭，指示燈亮起代表驗電筆功能正常。以同樣上述方法，您可以輕易的檢查家庭的燈泡、保險絲、家電的電源線..等家電用品電源線路的通斷線情況。

3. 電池更換：



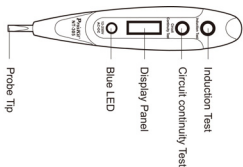
1. 產品背面，使用一字起子將筆夾撬起
2. 鬆開背蓋上二顆螺絲，打開背蓋
3. 更換電池後，將背蓋蓋回鎖上螺絲並裝回筆夾。



操作前，請先測試已知的線路，若無法測試時，請更換電池，若仍無法測試，請洽您的經銷商。

Pro'sKit® NT-305 Contact Voltage Tester Operation Guide

1. Appearance



2. Operation

1. Voltage Test (contact) :

AC voltage test: press the " induction test " button and place probe tip in contact with plug, circuit or unit to be tested, The LED lights up and displays voltage values.



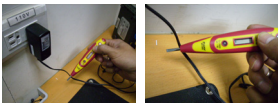
DC Voltage Test: press the " induction test " button and place probe tip to contact with plug or the anode side of object, the other hand holds the cathode side of object or press the cathode side of object in touch with the " induction test " button to cause a circuit to be tested. The LED lights up and display comes out with voltage values.



- *If display 12 means the voltage is 9~12V.
- *If display 12 36 means the voltage is 12~ 36V.
- *If display 12 36 55 means the voltage is 36~55V.
- *If display 12 36 55 110 means the voltage is 55~110V and under 220V.
- *If display 220 means the voltage is above 220V.

2. Cable Detection Test (non-contact)

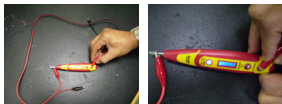
Press the " circuit continuity test " button and place the probe tip near to the wires or circuit to be tested.



If the " flash " signal is shown on the display panel, means it is live wire. If not, the wire is not live.

3. Circuit Continuity Test:

Set one end of the wire to contact the probe tip and the other end of wire in touch with " induction test " button as following pictures.

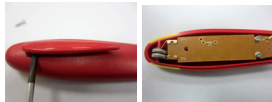


If the LED lights up, it means the wire is in the circuit, if not, the wire is open.

4. Tester Function Test

Press the " induction test " button with your hand and touch the probe tip with another hand, if the LED lights up, it means it is functioning.

5. Battery Replacement :



1. Remove the pen clip on the back side of the tester
2. Loosen 2pcs screws on the cover
3. Remove the back cover, and replace the batteries. Please pay attention with the polarity when replace it.
4. Put the cover back, tighten the screws and put the pen clip back as well



Before operating, please test the unit on a known live circuit, if the unit does not function as expected on a known live circuit, replace the batteries, if the unit still does not work, please contact your distributor.