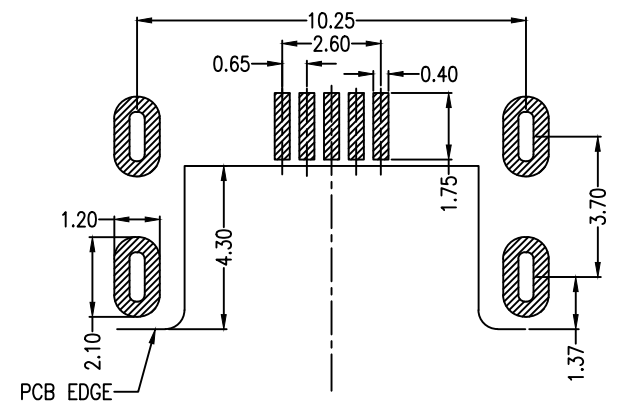
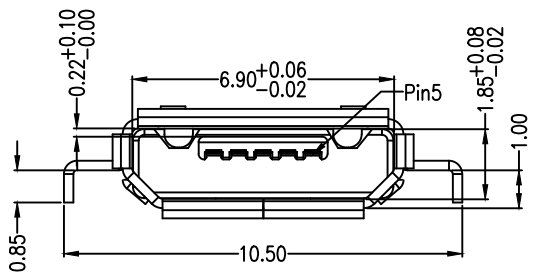
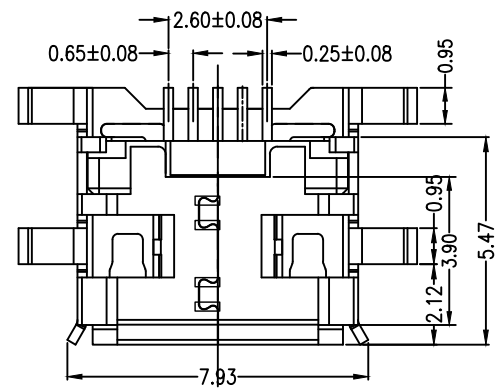
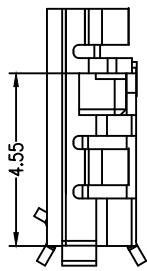
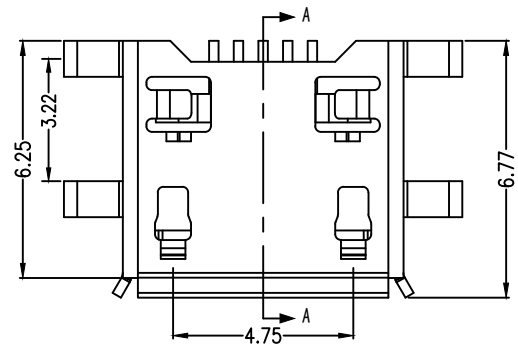
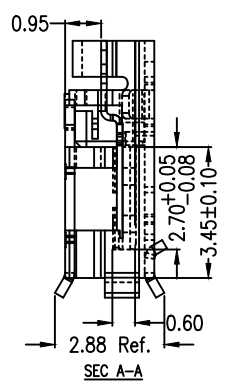
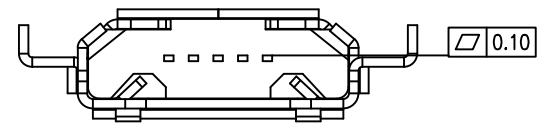


MAPX	MODIFICATION	DATE
------	--------------	------



RECOMMENDED PCB LAYOUT
PCB图仅供参考

Note:

1.Material:

- 1.1 Housing: High temperature thermoplastic with g.f,UL94v-0
- 1.2 Contact: copper alloy,t=0.15mm
- 1.3 Shell: copper alloy,t=0.25mm

2.Specification:

- 2.1 Current rating:1,5PIN 1.8A Max/2,3,4PIN 1A Max.
- 2.2 Dielectric withstanding voltage: 100 V(ac) for 1 min.
- 2.3 Contact resistance: 30 mΩ Max.
- 2.4 Insulation resistance: 100 MΩ Min.
- 2.5 Total mating force: 3.57 Kgf Max.
- 2.6 Total unmating force: 1.0 Kgf Min.
- 2.7 Temperature range: -30°C~80°C

产品图 PRODUCT CHART DWG 公差一览表 TOLERANCE UNLESS OTHERWISE				单位	MM	制图	Gavin	制图料号			
X.	±0.35	X.	±5°	UNITS		DRAWING		PRODUCT PART NO.			
.X	±0.30	.XX	±2°	比例	1:1	审核	郭治富	产品名称	Micro 5s B type 沉板1.0 四脚插		
.XX	±0.20	.XXX	±1°	日期	2016-04-19	核准	黄国荣	角法	版本	VER	AD
.XXX	±0.10		±0.5°	DATE		APPD		VIEW			