

Data Sheet

PR033xxVBHC

Page 1/5

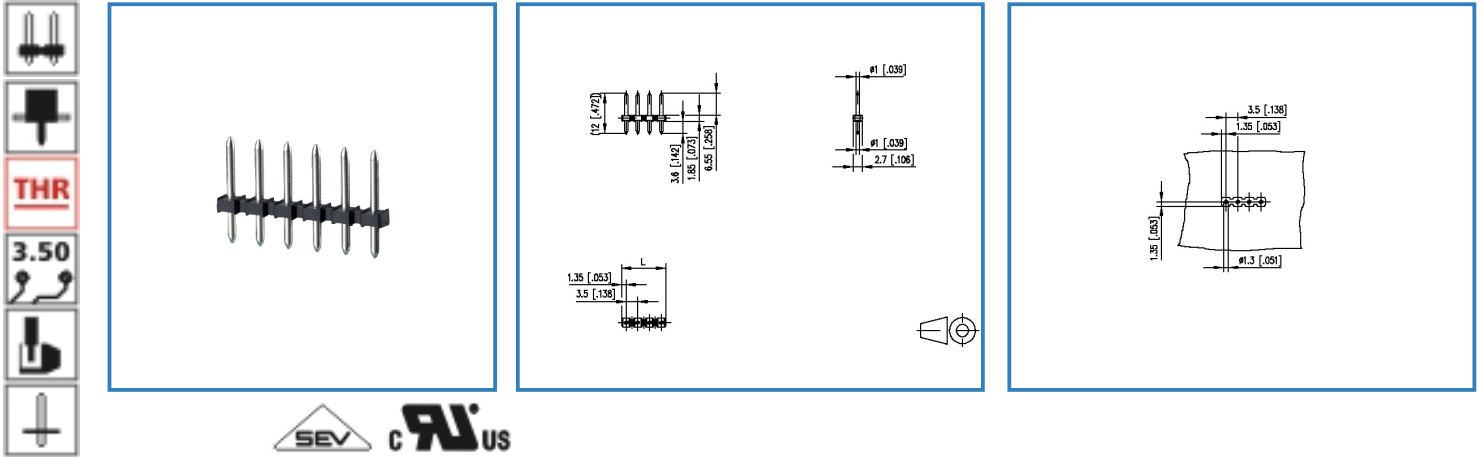
P/N

312241xx

xx=number of poles

2013/12/05

Illustration



see enlarged drawing at the end of the document

Product specification

- pin header, THR solderable
- centerline 3.50 mm, direction of connection vertical 0°
- fittable without loss of poles
- color black
- Tape & Reel packaging
- Connection data

cRUUS V / A 300 / 15

SEV 6 A / 200 V / 2.5 kV / 3 / IEC 61984

Data Sheet

PR033xxVBHC

Page 2/5

P/N

312241xx

xx=number of poles



2013/12/05

Technical Data

General Data

Solder pin length	3.6 mm		
min. number of poles	2		
max. number of poles	24		
Insulating material class	CTI 600		
clearance/creepage dist.	2.5 mm		
protection category	IP 00		
Overvoltage category	III	III	II
Pollution degree	3	2	2
Rated voltage	200 V	500 V	500 V
Rated test voltage	2.5 kV	2.5 kV	2.5 kV

Connection data

 V / A	300 / 15		
	6 A / 200 V / 2.5 kV / 3 / IEC 61984		

Material

insulating material	PA46
flammability class	V0
contact pin material	CuZn
contact pin surface	Ni + Ag

Climatic properties

upper limit temperature	105 °C
lower limit temperature	-40 °C

General

solderability	For THR products acc. to IPC/JEDEC J-STD-020D-MSL 1 For THT products max. 260 °C / 10 s
Tolerance	ISO 2768 -mH

Data Sheet

PR033xxVBHC

Page 3/5

P/N

312241xx

xx=number of poles

2013/12/05

Matching Part to

P/N

Product name

311661

RP023xxHBWC Typ 166



METZ CONNECT GmbH

Im Tal 2 | 78176 Blumberg | Germany | www.metz-connect.com

Phone +49 7702 533-0 | Fax +49 7702 533-433

Montageanleitung / Mounting instruction siehe / see www.metz-connect.com

Members of METZ CONNECT



Data Sheet

PR033xxVBHC

Page 4/5

P/N

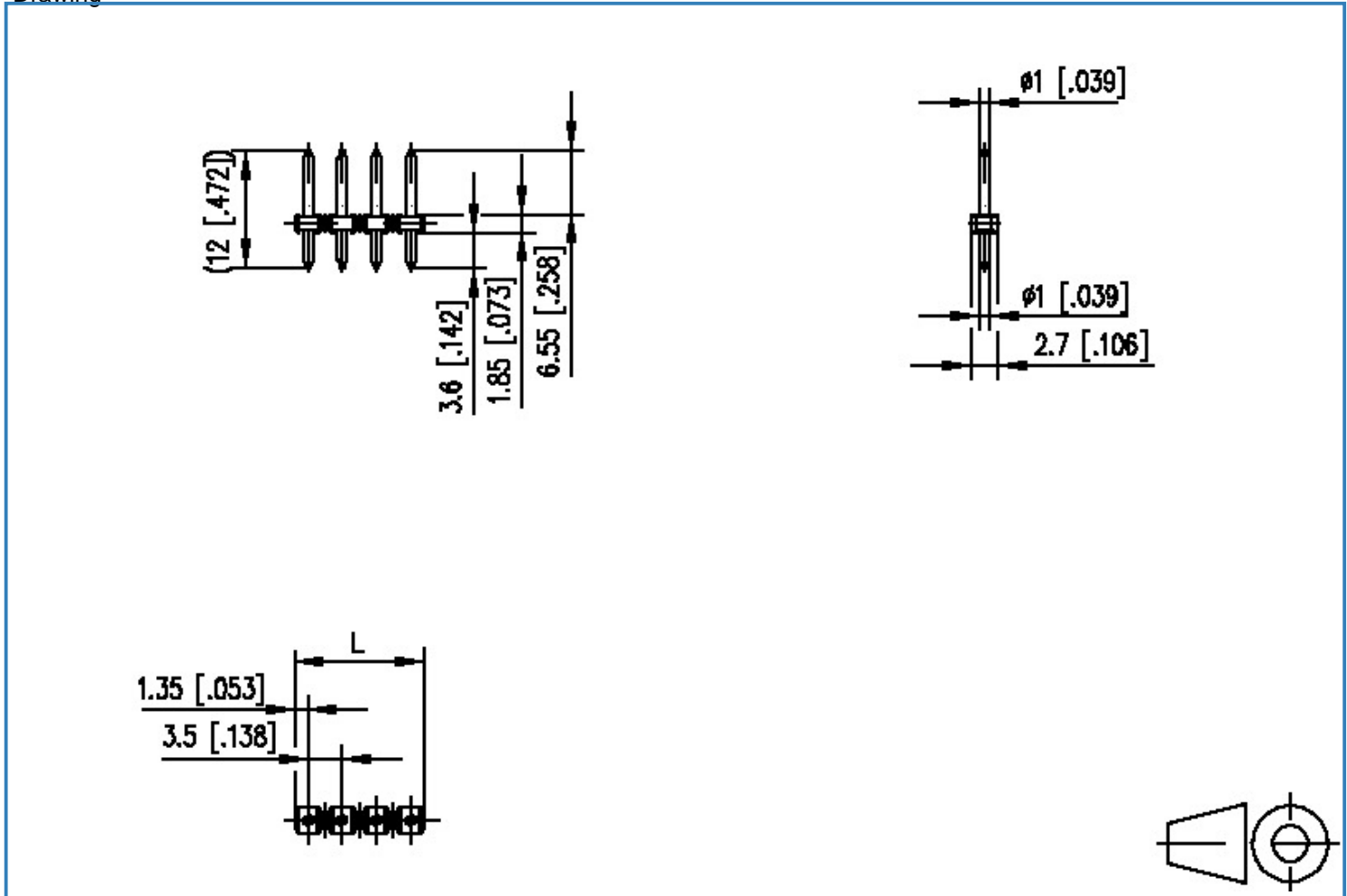
312241xx

xx=number of poles

2013/12/05

Illustration

Drawing



$L = (\text{pole size} - 1) \times \text{centerline} + 2.7 [0.106]$



Data Sheet

PR033xxVBHC

Page 5/5

P/N

312241xx

xx=number of poles

2013/12/05

PCB Layout

