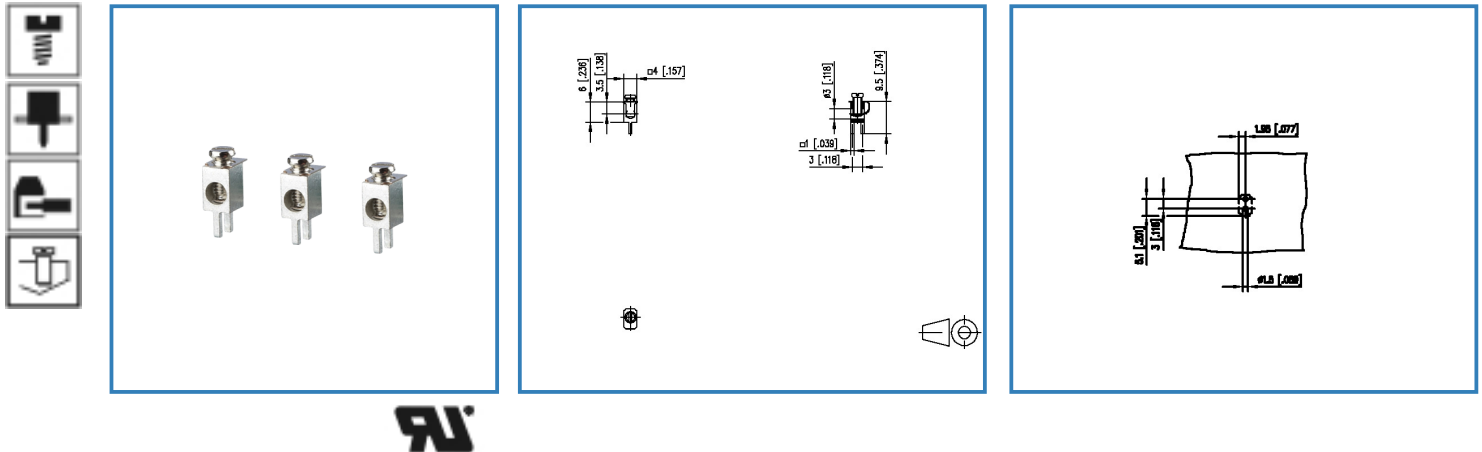


Data Sheet

Type 360273

Illustration



see enlarged drawing at the end of the document

Product specification

- screw type terminal block, solderable, double solder pins
- direction of connection 90°
- wire protector
- color metal
- open construction, screw brought down by hand (transport safety)
- Connection data

RIA A / AWG 15 / 26 - 14

Data Sheet

Type 360273

Page 2/4

P/N

360273

2014/01/27

Technical Data

General Data

Tightening torque SEV	0.5 Nm		
Tightening torque UL	3.5 lb-in		
Solder pin length	3.5 mm		
min. number of poles	1		
max. number of poles	1		
Overvoltage category	III	III	II
Pollution degree	3	2	2
Rated test voltage	0.8 kV	4 kV	2.5 kV

Connection data

 A / AWG	15 / 26 - 14
--	--------------

Material

terminal body material	CuZn
terminal body surface	Ni + Sn
screw surface	Zn Cr(VI)-frei/free
wire protector material	CuSn
wire protector surface	Sn
screw thread	M2.6

General

solderability	Acc. to JEDEC JESD22-B102E 245°C/5s
Tolerance	ISO 2768 -mH

Data Sheet

Type 360273

Page 3/4

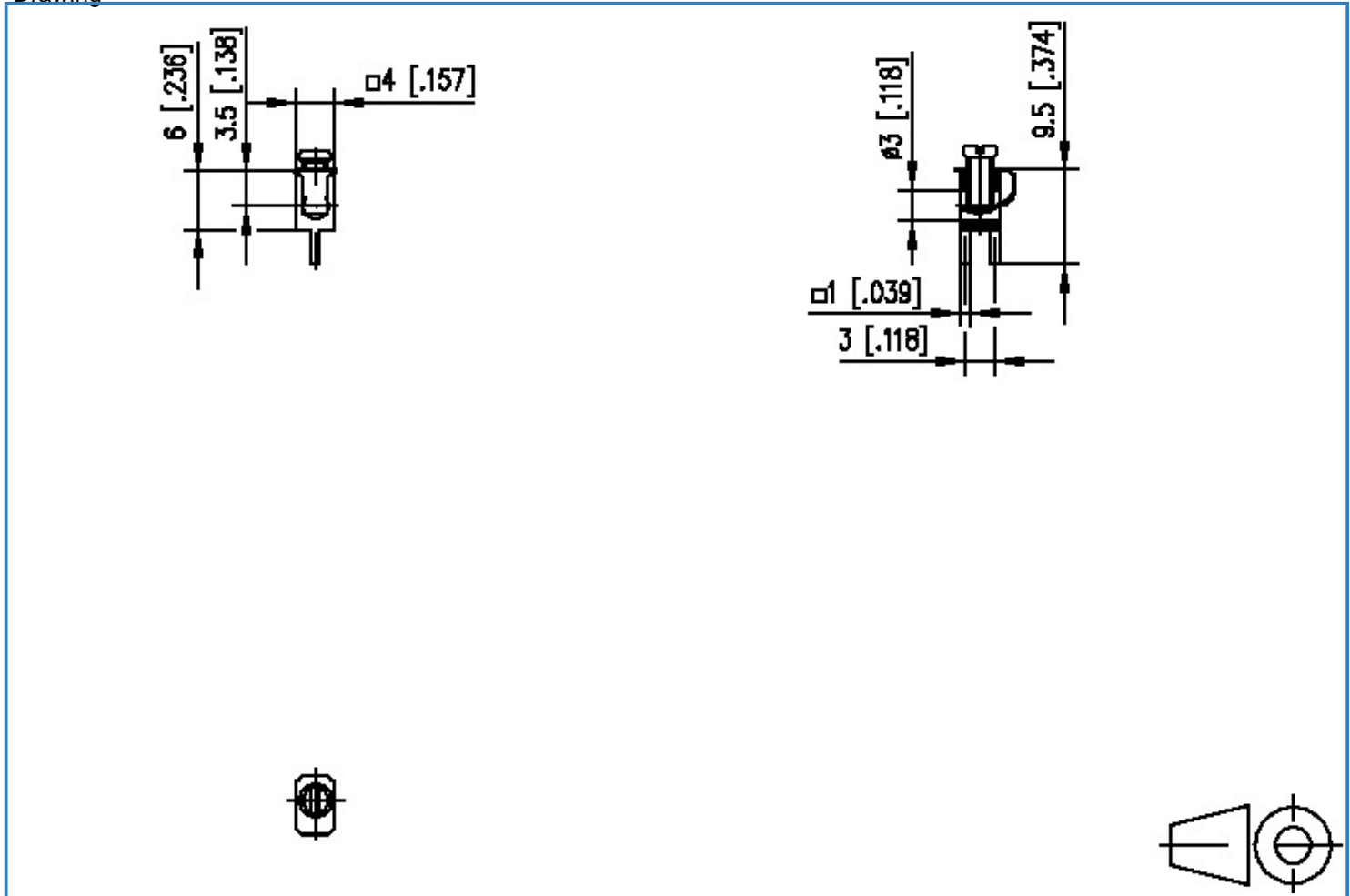
P/N

360273

2014/01/27

Illustration

Drawing



Data Sheet

Type 360273

Page 4/4

P/N

360273

2014/01/27

PCB Layout

