



EVERLIGHT ELECTRONICS CO.,LTD.

DEVICE NUMBER : DLE-912-184 REV : 1.0
 ECN : _____ PAGE : 1/5

1.8mm Round Subminiature "Gull Wing" Lead (Square Base) LEDs

PART NO. : 91-21SURC/S530-A3/TR7

■ Features :

- Package in 12mm tape on 7" diameter reels.
- Compatible with automatic placement equipment.
- Compatible with infrared and vapor phase reflow solder process.
- IC compatible.
- EIA std package.
- Mono-color type.

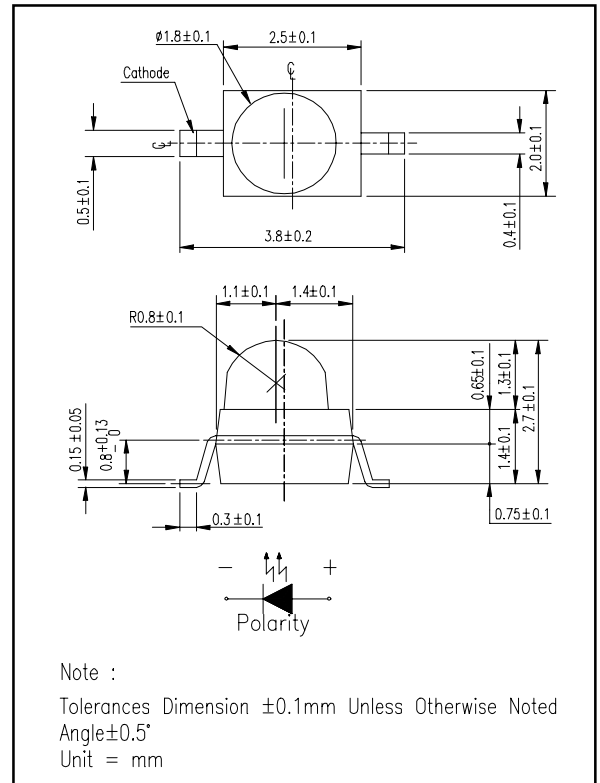
■ Descriptions :

- The 91-21 SMD taping is much smaller than lead frame type compoments. Thusenable smaller board size. Higher packing density. Reduced storage space and finally smaller equipment to be obtained.
- Besides, light weight makes them ideal for miniature applications, etc.
- Furthermore by automation assembly machines the accuracy is anticipated.

■ Applications :

- Small indicator for outdoor applications.
- Flat backlight for LCD, switches and symbols.
- Indicator and backlight in office equipment.
- Indicator and backlight for battery driven equipment.
- Indicator and backlight for audio and video equipment.
- Automotive : backlighting in dashboards and switches.
- Telecommunication : indicator and backlighting in telephone and fax.
- General use.

■ Package Dimension :



PART NO.	Chip		Lens Color
	Material	Emitted Color	
91-21SURC/S530-A3/TR7	AlGaInP	Hyper Red	Water Clear

OFFICE : NO. 25,Lane 76,Sec.3, Chung Yang Rd., Tucheng 236, Taipei, Taiwan, R.O.C.
 TEL : 886-2-2267-2000,2267-9936
 FAX : 886-2-2267-6244,22676189,22676306
<http://www.everlight.com>



EVERLIGHT ELECTRONICS CO.,LTD.

DEVICE NUMBER : DLE-912-184 REV : 1.0

ECN : _____ PAGE : 3/5

1.8mm Round Subminiature "Gull Wing" Lead (Square Base) LEDs

PART NO. : 91-21SURC/S530-A3/TR7

■ Absolute Maximum Ratings at T_A = 25°C

Parameter	Symbol	Rating	Unit
Reverse Voltage	V _r	5	V
Forward Current	I _f	25	mA
Operating Temperature	T _{opr}	-40 ~ +85	°C
Storage Temperature	T _{stg}	-40 ~ +100	°C
Soldering Temperature	T _{sol}	260 ± 5 for 5 sec	°C
Power Dissipation	P _d	60	mW
Peak Forward Current(Duty 1/10 @ 1KHZ)	I _f (Peak)	160	mA

■ Electronic Optical Characteristics :

Parameter	Symbol	MIN.	TYP.	MAX.	Unit	Condition
Luminous intensity	I _v	401	602	----	mcd	I _f = 20mA
Viewing Angle	2θ 1/2	----	25	----	deg	
Peak Wavelength	λ _p	----	632	----	nm	
Dominant Wavelength	λ _d	----	624	----	nm	
Spectrum Radiation Bandwidth	△λ	----	20	----	nm	
Forward Voltage	V _f	----	2.0	2.4	V	
Reverse Current	I _r	----	----	10	μA	V _r =5V



EVERLIGHT ELECTRONICS CO.,LTD.

DEVICE NUMBER : DLE-912-184 REV : 1.0

ECN : _____ PAGE : 4/5

1.8mm Round Subminiature "Gull Wing" Lead (Square Base) LEDs

PART NO. : 91-21SURC/S530-A3/TR7

■ Reliability Test Item And Condition

NO.	Item	Test Conditions	Test Hours/ Cycle	Sample Size	Ac/Re
1	Solder Heat	TEMP : 260°C ± 5 °C	5 sec	76 pcs	0/1
2	Temperature Cycle	H : +85°C 30 min ↑ 5 min ↓ L : -55°C 30 min	50 cycle	76 pcs	0/1
3	Thermal Shock	H : +100°C 5 min ↑ 10 sec ↓ L : -10°C 30 min	50 cycle	76 pcs	0/1
4	High Temperature Storage	TEMP. : +100°C	1000 hrs	76 pcs	0/1
5	Low Temperature Storage	TEMP. : -55°C	1000 hrs	76 pcs	0/1
6	DC Operating Life	If = 20 mA	1000 hrs	76 pcs	0/1
7	High Temperature / High Humidity	85°C / 85% R.H.	1000 hrs	76 pcs	0/1



EVERLIGHT ELECTRONICS CO.,LTD.

DEVICE NUMBER : DLE-912-184 REV : 1.0

ECN : _____ PAGE : 5/5

1.8mm Round Subminiature "Gull Wing" Lead (Square Base) LEDs

PART NO. : 91-21SURC/S530-A3/TR7

Typical Electro-Optical Characteristic Curves

