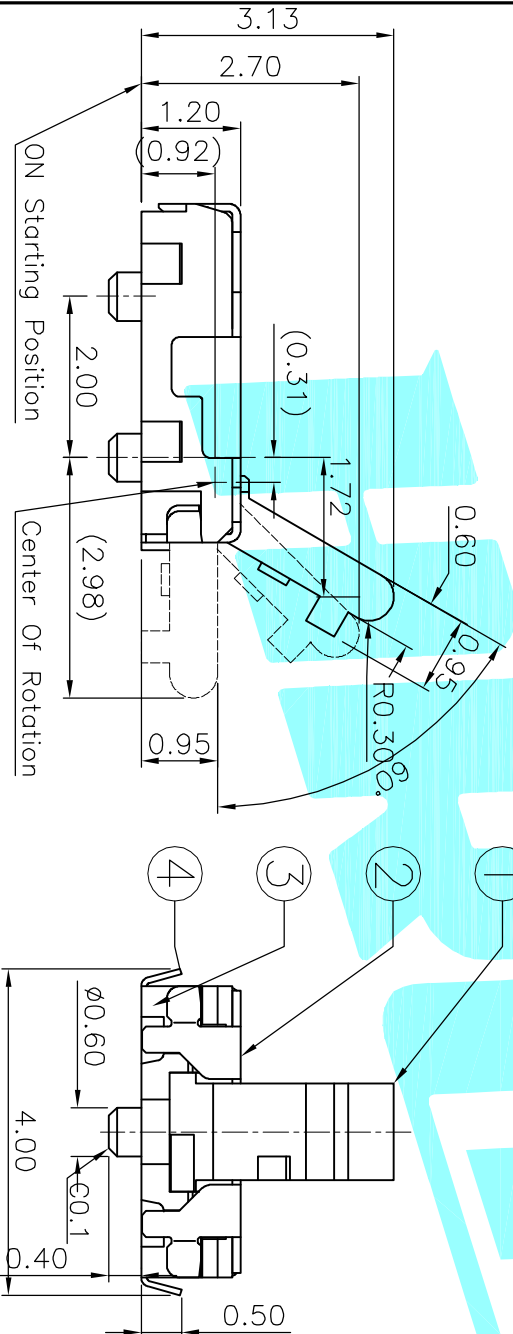
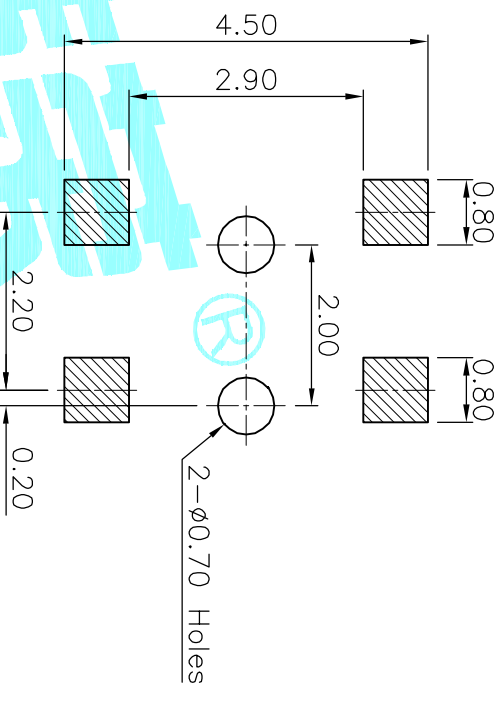


PCB Layout(Pattern side)



NOTE:
Operating Force: 35gf Max

ITEM	PART NAME	TER'NO.	QTY.	MATERIAL	FINISHING	REMARK
①	Slider	---	1	PA46	Black	
②	Cover	---	1	SUS	Natural	
③	Base	---	1	PA46	Black	
④	Terminal	---	4	Phosphor Bronze	Ag Plated	
⑤	Contact Spring	---	1	SUS	Ag Plated	
⑥	Spring	---	1	SUS	---	

PART NO.	
K5-1621UA-01	K5-1621UN-01

APPROVALS		DATE	TITLE:	
DRAWN	J.X.Zhang	2013/9/5	DETECTOR SWITCHS	
CHECKED				
APPROVALS				
TOLERANCES ARE		30~100μm ±0.30	ANGLE	PART NO.
10~30	±0.20	5~10	±2°	SCALE: 1:1
~5	±0.15			PROJ.
	±0.10			DRAWING NO.
ECN NO.	REV.	DATE.	DESCRIPTION.	CHANGE.
	A		NEW	CHECK.
				APPRO.



ELECTRONICS CO.,LTD

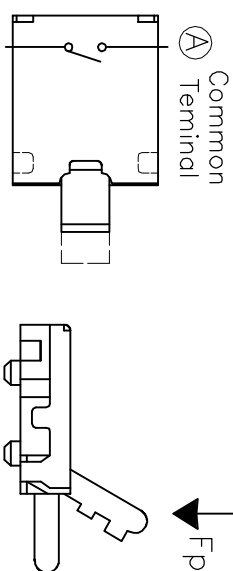
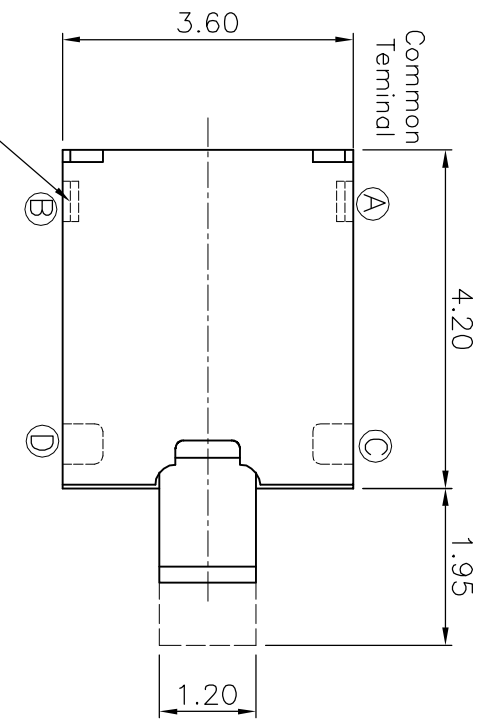
DETECTOR SWITCHS

PART NO.

SCALE: 1:1

DRAWING NO.

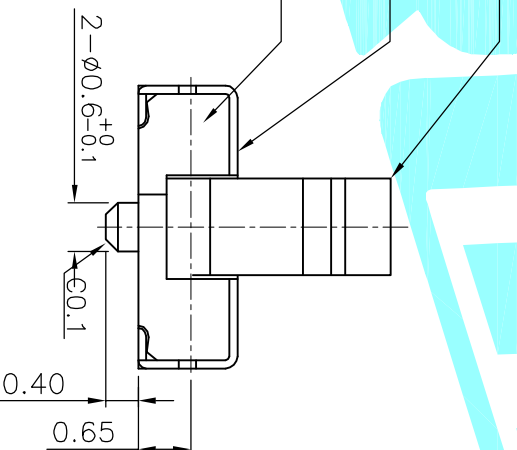
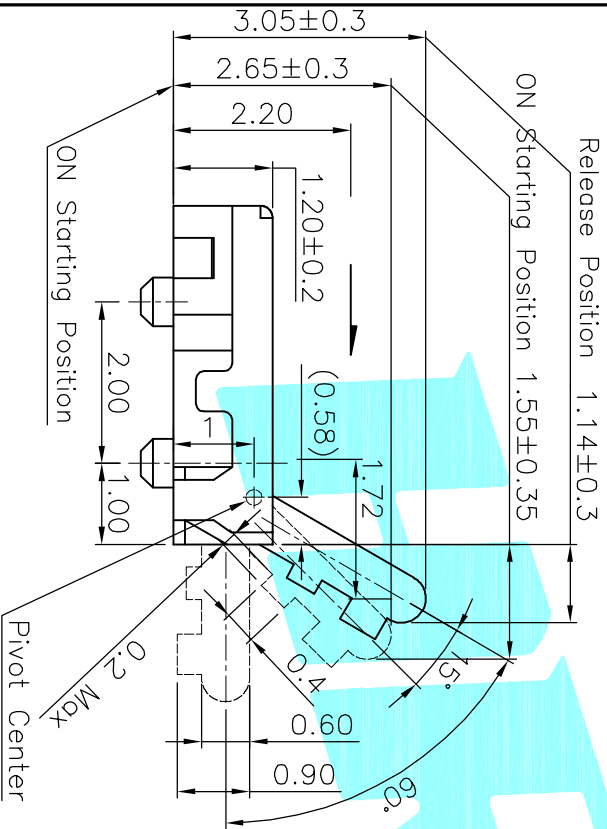
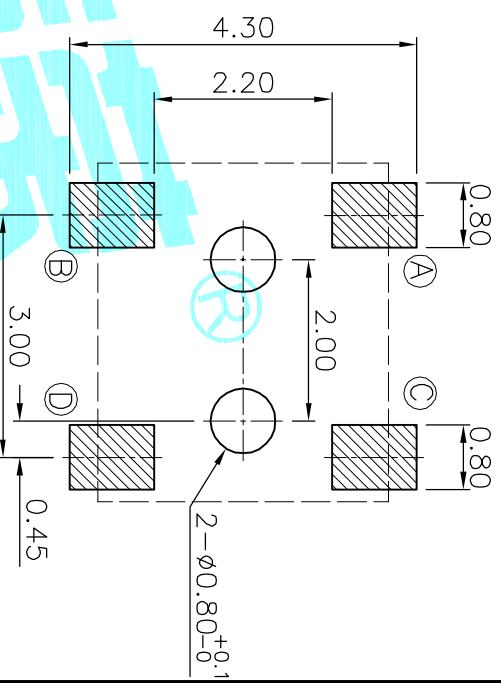
SHEET 1 OF 1



*Contact and Insulation dose not apply on between frame and common Terminal

Circuit Diagram

PCB Layout(Pattern side)



NOTE:
Operating Force: 30gf Max

PART NO.	
K5-1621UA-02	K5-1621UN-02

ITEM	PART NAME	TER'NO.	QTY.	MATERIAL	FINISHING	REMARK
①	Cam	—	1	PPHS Resin	Black	94V-0
②	Contact Spring	—	1	Phosphor Bronze	Ag Plated	—
③	Terminal	—	4	Phosphor Bronze	Ag Plated	—
④	Base	—	1	PPHS Resin or LCP Resin	Black	94V-0
⑤	Cover	—	1	Phosphor Bronze	Tin Plated	—
⑥	Slider	—	1	Polyamide	Black	94HB

APPROVALS		DATE
DRAWN	J.X.Zhang	2014/7/16
HROD ELECTRONICS CO.,LTD		
TITLE:		DETECTOR SWITCHS

ECN NO.	REV.	DATE.	DESCRIPTION.	CHANGE.	CHECK.	APPRO.
	A		NEW			
TOLERANCES ARE		30~125μm ±0.30	10~30 ±0.20	5~10 ±0.15	~5 ±0.10	ANGLE ±2°
PART NO.		UNIT: mm	SCALE: 1:1	PROJ:		SHEET 1 OF 1