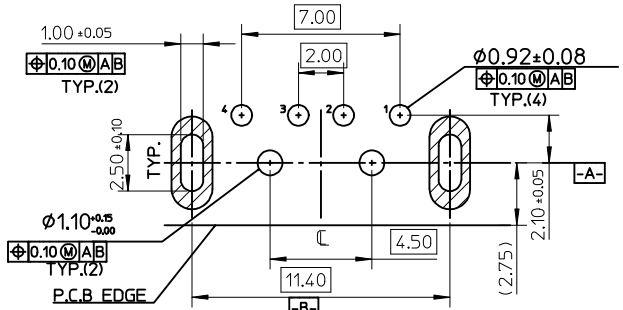
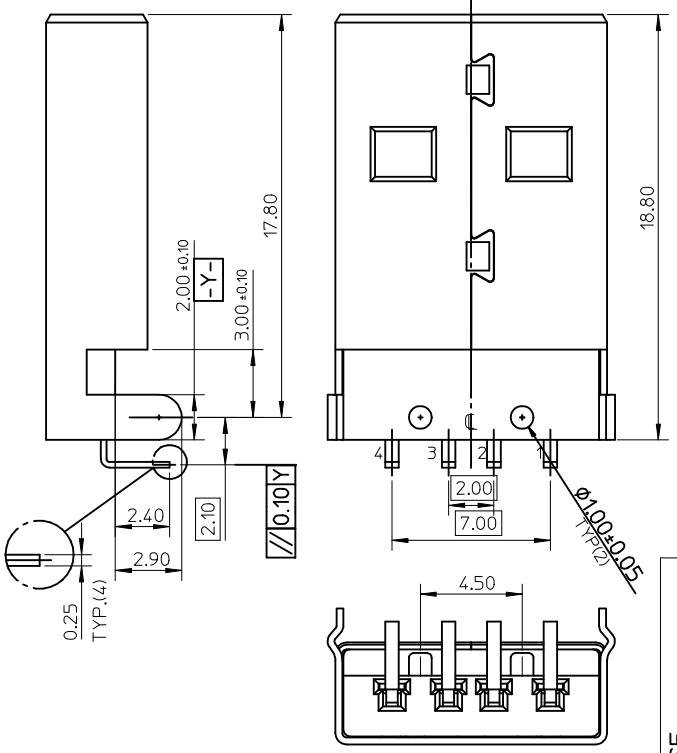


NOTES:
 1. MATERIAL:
 SHELL: SPCC,
 HOUSING: THERMOPLASTIC GLASS FIBER FILLED.
 UL94V-0, COLOR: BLACK.
 CONTACT: BRASS
 2. PLATING:
 TERMINAL:
 CONTACT AREA: GOLD(Au)
 THICKNESS=30 MICROINCH MINIMUM.
 SOLDER TAIL: TIN(Sn), ALLOY.
 THICKNESS=120 MICROINCH MINIMUM.
 UNDER PLATED: NICKEL(Ni), THICKNESS=50 MICROINCH MINIMUM.
 METAL SHELL:
 NICKEL(Ni). THICKNESS=120 MICROINCH MINIMUM.
 UNDER PLATE: COPPER(Cu), THICKNESS=50 MICROINCH MINIMUM.
 3. RECOMMENDED PCB THICKNESS: 1.20~1.60mm
 4. PRODUCT SPECIFICATION: REFERS TO PS-48037-001
 5. PACKAGE SPECIFICATION: SEE TABLE
 6. TEST SUMMARY: REFERS TO TS-48037-001



RECOMMENDED PCB LAYOUT

48037-0001	TRAY	PK-48037-001
MOLEX P/N	PACKAGE	PACKAGE SPEC

REVISE EC NO: S242060414.1 DRWN: F YANG05 2015/10/30 CHKD: APPR: RZHANG 2015/10/16/0616	DESCRIPTION	QUALITY SYMBOLS	GENERAL TOLERANCES (UNLESS SPECIFIED)		DIMENSION STYLE		SCALE	DESIGN UNITS		THIRD ANGLE PROJECTION	
		$F_A=0$ $F_C=0$ $F_D=0$	mm	INCH	MM ONLY		4:1	METRIC		⊙ □	
D	REV		4 PLACES	± ---	± ---	DRAWN BY	DATE	TITLE USB A TYPE PLUG R/A CONNECTOR DIP TYPE			
			3 PLACES	± ---	± ---	CLOLIN DUAN	2003/08/22				
			2 PLACES	± 0.25	± ---	CHECKED BY	DATE	DOCUMENT NO. SD-48037-001			
			1 PLACE	± 0.25	± ---	APPROVED BY	DATE				
			0 PLACE	±	±	ERIC LAN	2003/08/22	SHEET NO. 1 OF 1			
			ANGULAR ± 3 °		MATERIAL NO.		THIS DRAWING CONTAINS INFORMATION THAT IS PROPRIETARY TO MOLEX INCORPORATED AND SHOULD NOT BE USED WITHOUT WRITTEN PERMISSION				
			DRAFT WHERE APPLICABLE MUST REMAIN WITHIN DIMENSIONS		SEE TABLE						
					SIZE A3						