



SMD Aluminum Electrolytic Capacitors

VZS

Features

- 5 ~ 8 ϕ , 105°C, 2,000 hours assured
- Low impedance 30 ~ 50% less than VZH series
- Large capacitance with ultra low impedance capacitors
- Designed for surface mounting on high density PC board
- RoHS Compliance

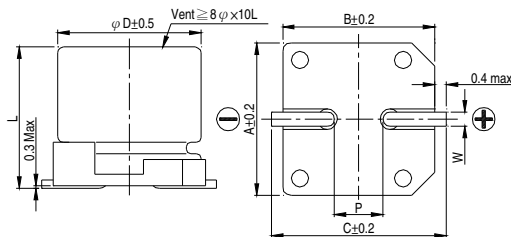


Marking color: Black

SPECIFICATIONS

Items	Performance																				
Category Temperature Range	-55°C ~ +105°C																				
Capacitance Tolerance	±20% (at 120Hz, 20°C)																				
Leakage Current (at 20°C)	I = 0.01CV or 3 (μA) whichever is greater (after 2 minutes) Where, C = rated capacitance in μF V = rated DC working voltage in V																				
Dissipation Factor (Tan δ at 120Hz, 20°C)	<table border="1"> <thead> <tr> <th>Rated Voltage</th> <th>6.3</th> <th>10</th> <th>16</th> <th>25</th> <th>35</th> </tr> </thead> <tbody> <tr> <td>Tan δ (max)</td> <td>0.30</td> <td>0.26</td> <td>0.22</td> <td>0.16</td> <td>0.13</td> </tr> </tbody> </table>	Rated Voltage	6.3	10	16	25	35	Tan δ (max)	0.30	0.26	0.22	0.16	0.13								
Rated Voltage	6.3	10	16	25	35																
Tan δ (max)	0.30	0.26	0.22	0.16	0.13																
Low Temperature Characteristics (at 120Hz)	<p>Impedance ratio shall not exceed the values given in the table below.</p> <table border="1"> <thead> <tr> <th colspan="2">Rated Voltage</th> <th>6.3</th> <th>10</th> <th>16</th> <th>25</th> <th>35</th> </tr> </thead> <tbody> <tr> <td rowspan="2">Impedance Ratio</td> <td>Z(-25°C)/Z(+20°C)</td> <td>4</td> <td>3</td> <td>2</td> <td>2</td> <td>2</td> </tr> <tr> <td>Z(-55°C)/Z(+20°C)</td> <td>8</td> <td>5</td> <td>4</td> <td>3</td> <td>3</td> </tr> </tbody> </table>	Rated Voltage		6.3	10	16	25	35	Impedance Ratio	Z(-25°C)/Z(+20°C)	4	3	2	2	2	Z(-55°C)/Z(+20°C)	8	5	4	3	3
Rated Voltage		6.3	10	16	25	35															
Impedance Ratio	Z(-25°C)/Z(+20°C)	4	3	2	2	2															
	Z(-55°C)/Z(+20°C)	8	5	4	3	3															
Endurance	<table border="1"> <thead> <tr> <th>Test Time</th> <th>2,000 Hrs</th> </tr> </thead> <tbody> <tr> <td>Capacitance Change</td> <td>Within ±30% of initial value</td> </tr> <tr> <td>Dissipation Factor</td> <td>Less than 300% of specified value</td> </tr> <tr> <td>Leakage Current</td> <td>Within specified value</td> </tr> </tbody> </table> <p>* The above specifications shall be satisfied when the capacitors are restored to 20°C after the rated voltage applied for 2,000 hours at 105°C.</p>	Test Time	2,000 Hrs	Capacitance Change	Within ±30% of initial value	Dissipation Factor	Less than 300% of specified value	Leakage Current	Within specified value												
Test Time	2,000 Hrs																				
Capacitance Change	Within ±30% of initial value																				
Dissipation Factor	Less than 300% of specified value																				
Leakage Current	Within specified value																				
Shelf Life Test	Test time: 1,000 hours; other items are the same as those for the Endurance.																				
Ripple Current & Frequency Multipliers	<table border="1"> <thead> <tr> <th>Frequency(Hz)</th> <th>50, 60</th> <th>120</th> <th>1k</th> <th>10k up</th> </tr> </thead> <tbody> <tr> <td>Multiplier</td> <td>0.60</td> <td>0.70</td> <td>0.85</td> <td>1.0</td> </tr> </tbody> </table>	Frequency(Hz)	50, 60	120	1k	10k up	Multiplier	0.60	0.70	0.85	1.0										
Frequency(Hz)	50, 60	120	1k	10k up																	
Multiplier	0.60	0.70	0.85	1.0																	

DIAGRAM OF DIMENSIONS



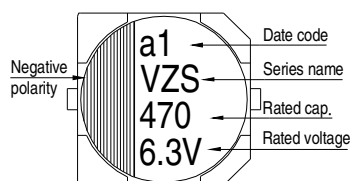
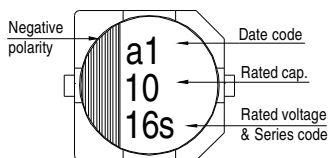
LEAD SPACING AND DIAMETER

ϕD	L	A	B	C	W	P ± 0.2
5	5.7 ± 0.3	5.3	5.3	6.1	0.5 ~ 0.8	1.5
6.3	5.7 ± 0.3	6.6	6.6	7.4	0.5 ~ 0.8	2.0
8	10 ± 0.5	8.4	8.4	9.2	0.7 ~ 1.1	3.1

MARKING

$\phi D \leq 6.3 \text{ mm}$

$\phi D = 8 \text{ mm}$





SMD Aluminum Electrolytic Capacitors

VZS

Dimension: $\phi D \times L$ (mm)
 Ripple Current: mA/rms at 100k Hz, 105°C
 Impedance: Ω / at 100k Hz, 20°C

DIMENSION & PERMISSIBLE RIPPLE CURRENT

V. DC		6.3V (0J)			10V (1A)			16V (1C)			25V (1E)			35V (1V)		
μF	Contents	$\phi D \times L$	Imp.	mA	$\phi D \times L$	Imp.	mA	$\phi D \times L$	Imp.	mA	$\phi D \times L$	Imp.	mA	$\phi D \times L$	Imp.	mA
22	220							5×5.7	0.36	240	5×5.7	0.36	240	5×5.7	0.36	240
33	330				5×5.7	0.36	240				5×5.7	0.36	240	5×5.7	0.36	240
											6.3×5.7	0.26	300	6.3×5.7	0.26	300
47	470	5×5.7	0.36	240				5×5.7	0.36	240	5×5.7	0.36	240	6.3×5.7	0.26	300
								6.3×5.7	0.26	300	6.3×5.7	0.26	300	6.3×5.7	0.26	300
68	680							5×5.7	0.36	240	6.3×5.7	0.26	300	6.3×5.7	0.26	300
								6.3×5.7	0.26	300	6.3×5.7	0.26	300	6.3×5.7	0.26	300
100	101	5×5.7 6.3×5.7	0.36 0.26	240 300	5×5.7	0.36	240	6.3×5.7	0.26	300	6.3×5.7	0.26	300	8×10	0.08	850
150	151	5×5.7	0.36	240	6.3×5.7	0.26	300	6.3×5.7	0.26	300	8×10	0.08	850	8×10	0.08	850
220	221	6.3×5.7	0.26	300	6.3×5.7	0.26	300	8×10	0.08	850	8×10	0.08	850	8×10	0.08	850
330	331	6.3×5.7	0.26	300	8×10	0.08	850	8×10	0.08	850	8×10	0.08	850			
470	471	8×10	0.08	850	8×10	0.08	850	8×10	0.08	850						
680	681	8×10	0.08	850	8×10	0.08	850									