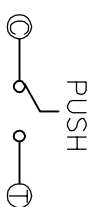


TER	ANG: (20°)	(15°)	(15°)	(20°)
①				
②				
③				

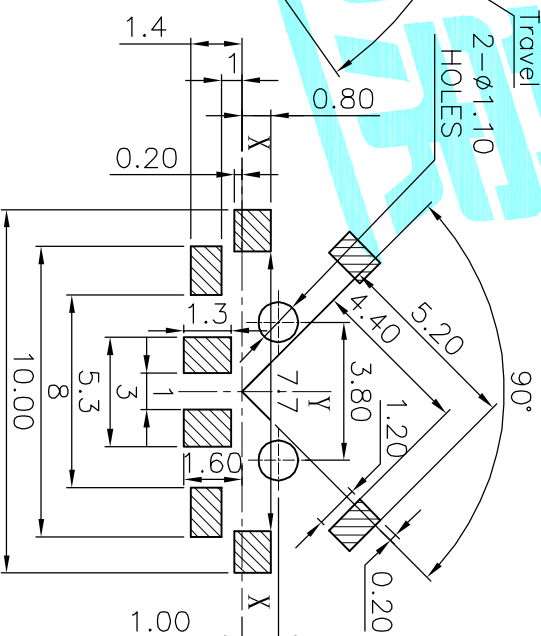
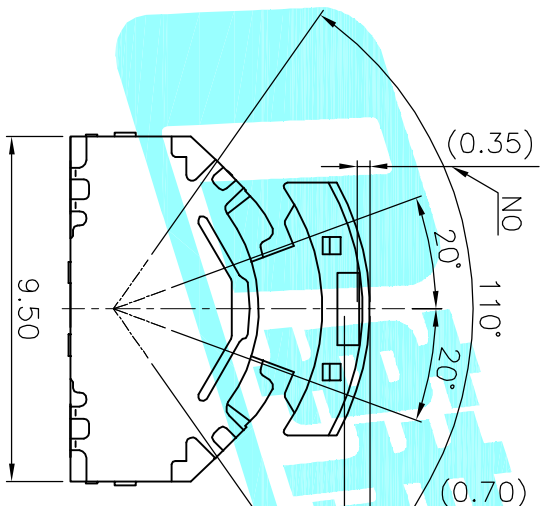
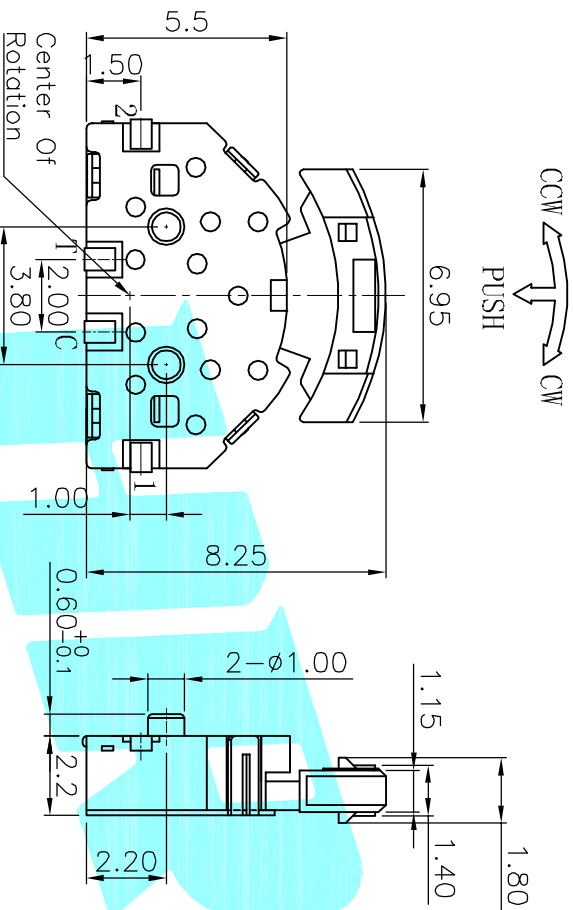
0° (Hatched = NO)

CCW → → CW

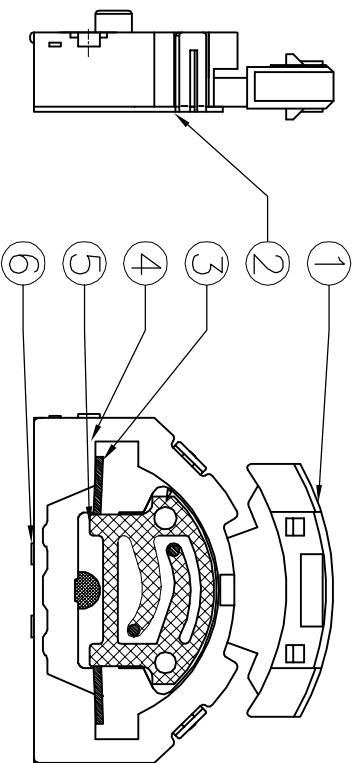
CODE TABLE



NOTE:
 Operating Force:
 lever portion 100 ± 30 gf
 Push portion 205 ± 50 gf



P.C.B Mounting
 Pattern Dimension



ITEM	PART NAME	TER'NO.	QTY.	MATERIAL	FINISHING	REMARK
⑥	Contact	—	1	F.Ag/Brass	—	—
⑤	Terminal	—	4	Brass(0.15t)	Plating silver	—
④	Base	—	1	Nylon	Black	—
③	Spring	—	1	SUS	—	—
②	Cover	—	1	SUS	White	—
①	Keystroke	—	1	Nylon	Black	—

APPROVALS		DATE
DRAWN	J.X.Zhang	2013/8/15

ECN NO.	REV.	DATE.	DESCRIPTION.	CHANGE.	CHECK.	APPRO.
	A		NEW			

APPROVALS		TITLE:	PART NO.	SCALE:	PROJ:
CHECKED		MULTIFUNCTIONAL SWITCHS	K1-1519SA-02	1:1	①

TOLERANCES ARE		ANGLE	UNIT:	DRAWING NO.	SHEET
30~12.5	±0.30	±2°	mm		1 OF 1
10~30	±0.20				
5~10	±0.15				
~5	±0.10				

HRON
 ELECTRONICS CO.,LTD