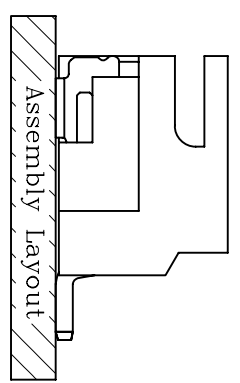
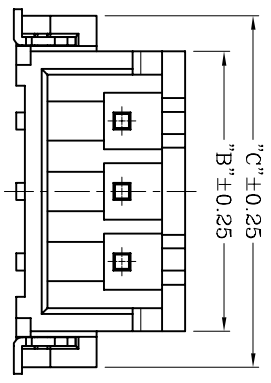


■ 技术参数 SPECIFICATIONS

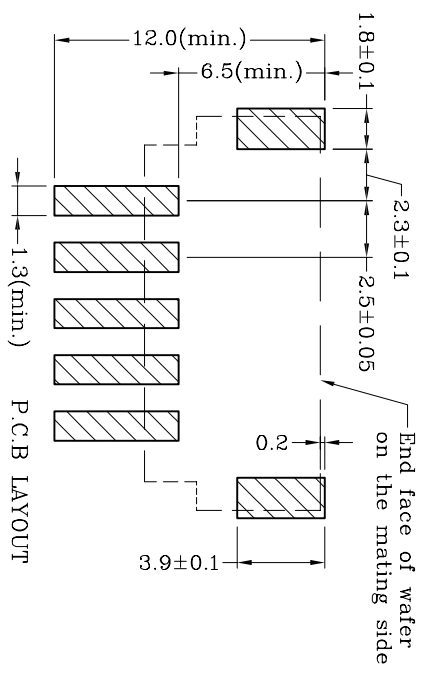
- 适用线规: AWG#28~#22
- Applicable Wire: AWG#28~#22
- 额定电压: 250V DC,AC(rms)
- Rated voltage: 250V DC,AC(rms)
- 额定电流: 3A (AWG #22)
- Rated Current: 3A (AWG #22)
- 耐压值: 1000V AC/minute
- Withstand voltage: 1000V AC/min.
- 工作温度: -25°C ~ +85°C
- Working Temp : -25°C ~ +85°C
- 绝缘电阻: $\geq 1000 M\Omega$
- Insulation resistance: $\geq 1000 M\Omega$
- 接触电阻: $\leq 20 m\Omega$
- Contact resistance: $\leq 20 m\Omega$

■ 材料 MATERIAL

- 绝缘体: 尼龙9T UL94-V0
- Insulator: Nylon9T, UL94-V0
- 接触针: 黄铜
- Contact PIN: Brass
- 焊片: 磷铜
- Solder tab: Phosphor bronze



Poles	DIM.A	DIM.B	DIM.C
2	2.50	7.45	10.00
3	5.00	9.95	12.50
4	7.50	12.45	15.00
5	10.00	14.95	17.50
6	12.50	17.45	20.00
7	15.00	19.95	22.50
8	17.50	22.45	25.00
9	20.00	24.95	27.50
10	22.50	27.45	30.00
11	25.00	29.95	32.50
12	27.50	32.45	35.00
13	30.00	34.95	37.50
14	32.50	37.45	40.00
15	35.00	39.95	42.50
16	37.50	42.45	45.00



TOLERANCE TABLE

	±0.30
.0	±0.30
.00	±0.20
.000	±0.05

APPROVED:

DATE:

CHECKED:

DATE:

DRAWN:

DATE:

YAN

2012-07-02

TITLE: 2501SMT-XP 贴片

深圳市灿科盟实业有限公司
CHANKLEMENT INDUSTRY CO., LTD

UNIT	mm	SCALE	free
FILE NO.	CKmtw-2501-0019	REV.	A