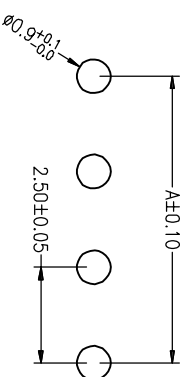
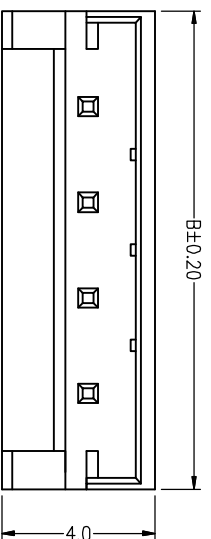
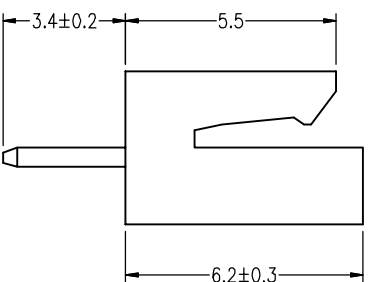
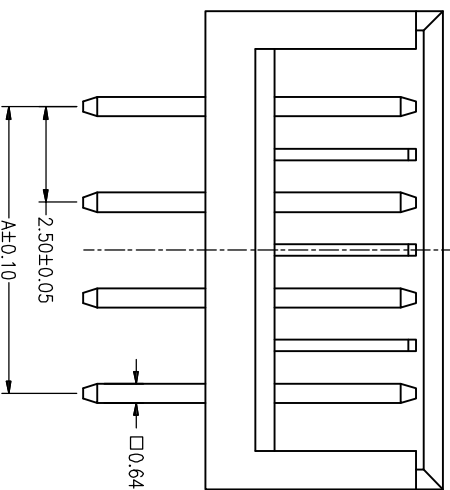


| Pin 数 | 2P | 3P | 4P | 5P | 6P | 7P | 8P | 9P | 10P | 11P | 12P | 13P | 14P | 15P |
|-------|------|------|------|------|------|------|------|------|------|------|------|------|------|------|
| R-寸 | 2.50 | 5.00 | 7.50 | 10.0 | 12.5 | 15.0 | 17.5 | 20.0 | 22.5 | 25.0 | 27.5 | 30.0 | 32.5 | 35.0 |
| A | 7.5 | 10.0 | 12.5 | 15.0 | 17.5 | 20.0 | 22.5 | 25.0 | 27.5 | 30.0 | 32.5 | 35.0 | 37.5 | 40.0 |
| B | | | | | | | | | | | | | | |



PCB Layout


SPECIFICATIONS

Current rating: 3A AC/DC
Voltage rating: 250V AC/DC
Contact resistance: 20m Ω max.
Withstand voltage: 1000V AC/min
Insulation resistance: 1000M Ω/min.
Temperature range: -25°C~+85°C
Applicable PC board thickness: 0.063"(1.6)

Material:

Part No: 2~15
Post: Brass. Tin/plated
Base: PA66 UL94V-2

| TOLERANCE TABLE | |
|-----------------|-------|
| .0 | ±0.25 |
| .00 | ±0.10 |
| .000 | ±0.05 |

| | | | |
|------------|----------------|---|------|
| APPROVED: | DATE: |  深圳市灿科盟实业有限公司 CHANKEMENG INDUSTRY CO., LTD | |
| CHECKED: | DATE: | | |
| DRAWN: | DATE: | TITLE: | |
| Iuli-Liu | 2014-01-10 | 2504S-XP | |
| CLIENT P/N | UNIT | SCALE | REV. |
| / | mm | free | A |
| FILE NO. | CKM-2504-00001 | | |