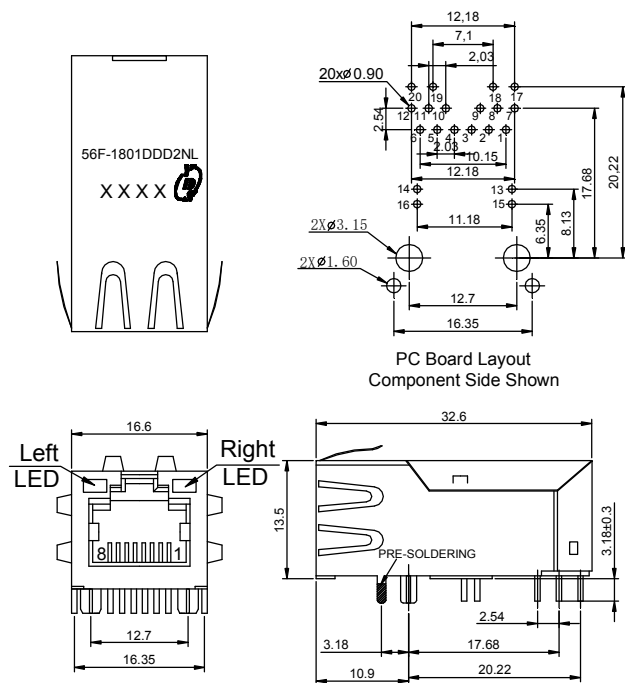
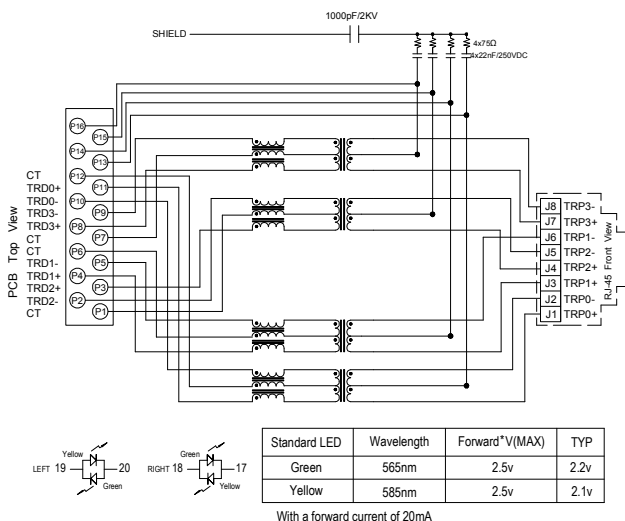


一、外观尺寸图



UNIT:mm Unless otherwise specified, all tolerances are ± 0.25

二、线路图



三、电气特性@25°C:

1. 圈比($\pm 3\%$): 1CT:1CT
2. 电感(100KHz/0.1V@8mA): 180uH MIN.
3. 电感(100KHz/0.1V@11mA): 150uH MIN.
4. 电感(100KHz/0.1V@19mA): 120uH MIN.
5. 插入损耗(dB MAX): -0.5dB(1-50MHz), -1.0dB(50-125MHz),
6. 反馈损耗(dB MIN): -20dB(1-40MHz), -20+15log(f/40MHz)dB(40-200MHz)
7. 串音干扰(dB TYP): -30dB(1-125MHz), -25dB(125-200MHz)
8. 共一差模抑制(dB TYP): -30dB(1MHz), -30dB(50MHz), -27dB(100MHz), -24dB(200MHz)
9. 共模抑制(dB TYP): -35dB(1-125MHz)
10. 差一共模抑制(dB TYP): -48dB(1-10MHz), -48+19log(f/10MHz)dB(10-200MHz)
11. 耐压(Pri to Sec) : 1500Vrms/0.5mA/60s
12. 操作温度: 0°C TO +70°C
13. POE 应用电流能力: 720mA
14. 符合 RoHS 标准

REV.	DESCRIPTION	DATE	DWN	AP'PD

RoHS
Compliant

元册科技股份有限公司

YUAN DEAN SCIENTIFIC CO., LTD.

TITLE	2.5GBase-T POE+ Single Port Rj45 Integrated Connector Modul		
P/N	56F-1801DDDXNL	REV.	1.0
PAGE NO	1-4	DATE	2018-1-16
AP'PD	Hsu	DWN	Zhou sheng mei

四、材料

外壳材料:

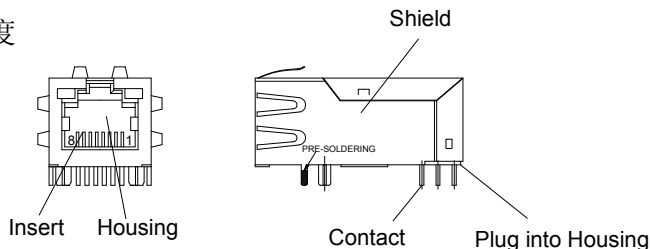
材料: 尼龙 66 UL94V-0 标准颜色: 黑色

插入材料:

材料: QSn6.5-0.1---0.35 毫米厚度

插入 -PBT GF UL94V-0

1. 电镀(1) 镍
2. 电镀(2) 100%锡
3. 电镀(3) 金 (3u" ~50u")



插入外壳材料:

PBT+30%GF UL 94V-0

接触脚材料:

材料: QSn6.5-0.1---0.35 毫米厚度

1. 电镀(1) 镍
2. 电镀(2) 100%锡

铁壳材料:

黄铜 H65Y 镀镍

产品寿命:750 周期最小.

五、环境

1. 储存温度 -40°C TO +85°C.
2. 操作温度: 0°C TO +70°C
3. 遵循于模块化插头 FCC 第 68 部分

六、产品型号:

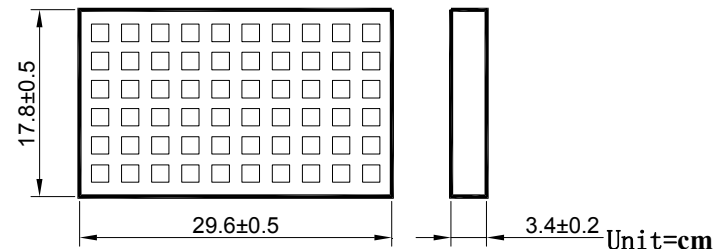
56F-1801DDDXNL

RoHS version
Gold Plating: 1=3u", 2=6u", 3=15u", 4=30u", 5=50u",

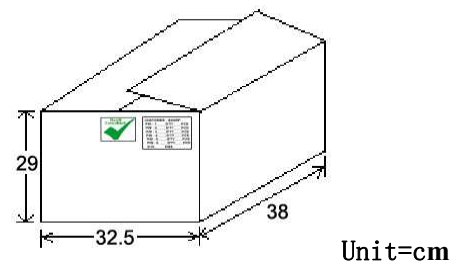
REV.	DESCRIPTION	DATE	DWN	AP'PD

七、包装信息

1. 包装单位 : 60 个/盘
2. 包装材质 : PET



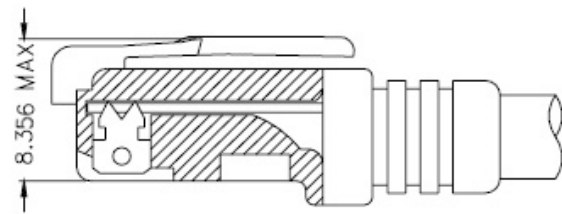
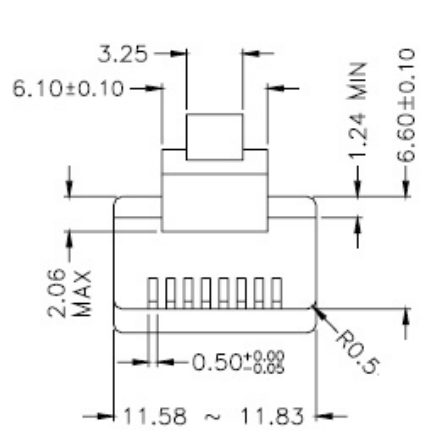
3. 外箱单位: 840 个/ 14 盘/箱



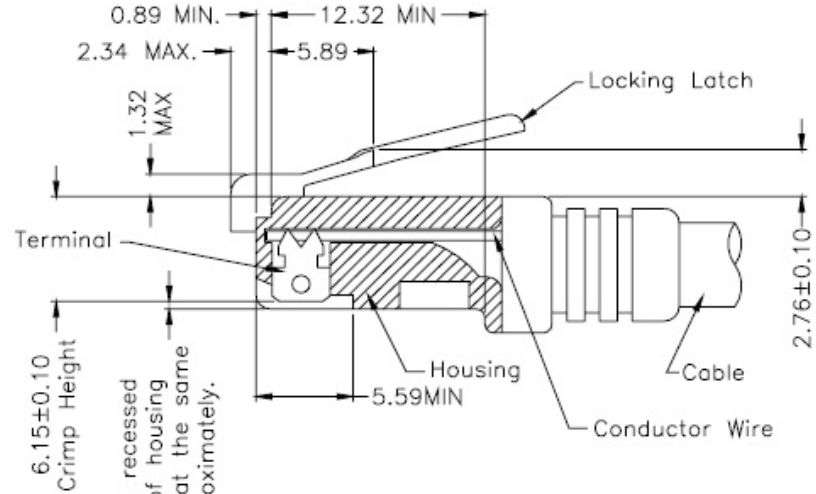
	 元册科技股份有限公司 YUAN DEAN SCIENTIFIC CO., LTD.			
	TITLE		2.5GBase-T POE+ Single Port Rj45 Integrated Connector Modul	
	P/N	56F-1801DDDXNL	REV.	1.0
	PAGE NO	2-4	DATE	2018-1-16
	AP'PD	Hsu	DWN	Zhou sheng mei

八、RJ 插头规范

REV.	DESCRIPTION	DATE	DWN	AP'PD



FOLLOW SPECIFICATION : FCC, PART 68, SUBPART F
FIGURE 68.500 (C)(2)(ii)



All contacts recessed below top of housing and must be at the same height approximately.

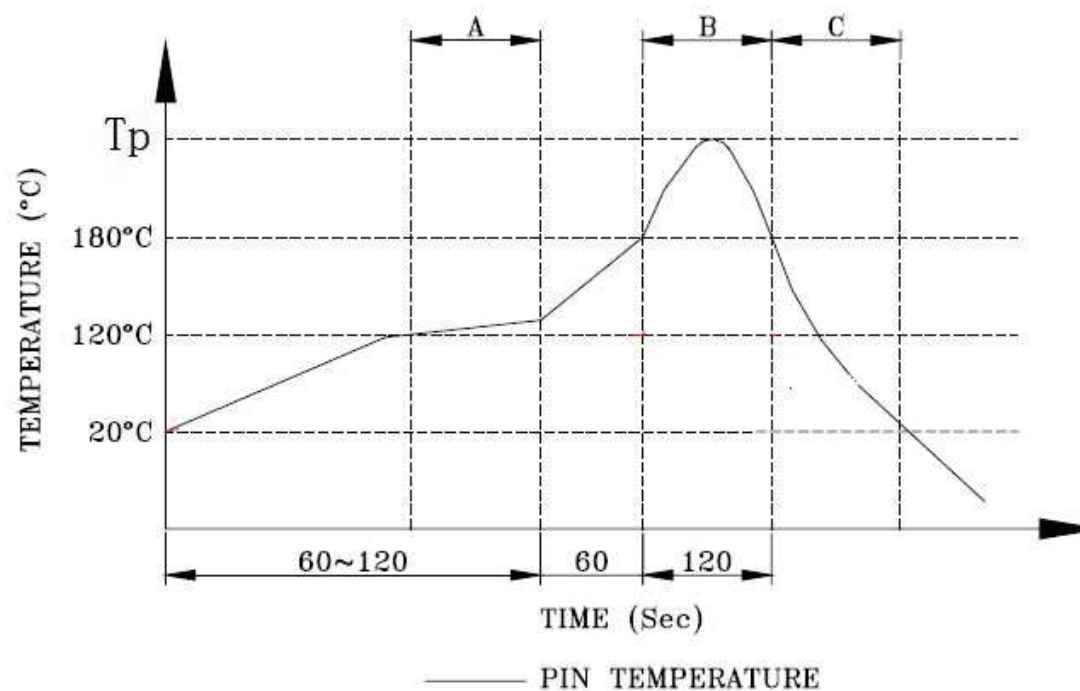
FOLLOW SPECIFICATION : FCC, PART 68, SUBPART F FIGURE 68.500 (C)(2)(i) AND IEC 603-7 FIGURE 23 & 24

STANDARD MODULAR PLUG ASSEMBLY

	元册科技股份有限公司 YUAN DEAN SCIENTIFIC CO., LTD.			
	TITLE		2.5GBase-T POE+ Single Port Rj45 Integrated Connector Modul	
	P/N	56F-1801DDDXNL	REV.	1.0
	PAGE NO	3-4	DATE	2018-1-16
	AP'PD	Hsu	DWN	Zhou sheng mei

九、波峰焊建议

REV.	DESCRIPTION	DATE	DWN	AP'PD



A. Preheating B. Soldering C. Gradual Cooling

建议的波峰焊曲线

1. 峰值温度 (TP): $250 \pm 10^{\circ}\text{C}$

2. 峰值温度 (TP) 时间: 5 秒最多



元册科技股份有限公司

YUAN DEAN SCIENTIFIC CO., LTD.

TITLE	2.5GBase-T POE+ Single Port Rj45 Integrated Connector Modul		
P/N	56F-1801DDDXNL	REV.	1.0
PAGE NO	4-4	DATE	2018-1-16
AP'PD	Hsu	DWN	Zhou sheng mei