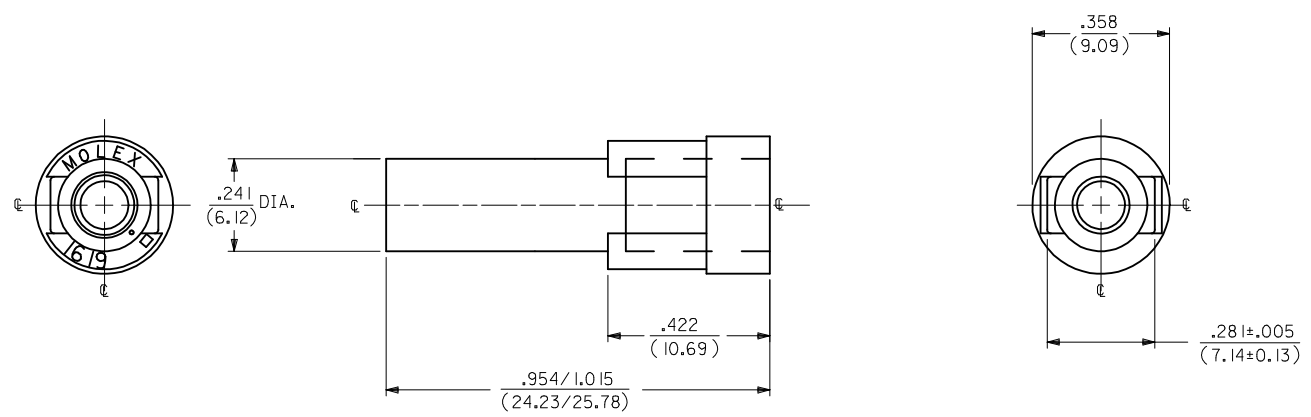


| ORDER NO. | ENG. NO. | OLD ENG. NO. |
|------------|---------------|--------------|
| 03-09-2011 | 1619-IP1A5M1A | 1619-P |
| 03-09-7011 | 1619-IP1A5M1B | 1619-P-D |
| 03-09-7012 | 1619-IP1A5M1G | ----- |
| 03-09-7013 | 1619-IP1A5M1H | ----- |



ENGINEERING NUMBER SYSTEM

1619-IP1A5M1*

- COLOR**
- A) NATURAL F) GRAY
 - B) BLACK G) RED
 - C) AMBER H) BLUE
 - D) BROWN J) GREEN
 - E) ORANGE K) YELLOW

NOTES:

- MATERIAL: NYLON 66, UL94V-2, COLOR: SEE LEGEND
- FINISH: NONE
- PRODUCT SPECIFICATION: PS-02-09
- PACKAGING SPECIFICATION: 16190000
- THIS HOUSING IS FOR USE WITH THE .093/(2.36) TERMINALS
- THIS PART CONFORMS TO CLASS B REQUIREMENTS OF COSMETIC SPECIFICATION PS-45499-002.

| | | | | | | | |
|--|------------------------|-----------------------|---|---|--|--------------|------------------------|
| ADD NOTES EC NO: UCP2016-2183 DRAWN: KIPPER 2015/12/18 CHKD: BELLE 2015/12/18 APPR: FSMITH 2015/12/23 | DESCRIPTION REV: W3 | QUALITY SYMBOLS | GENERAL TOLERANCES (UNLESS SPECIFIED) | DIMENSION STYLE | SCALE | DESIGN UNITS | THIRD ANGLE PROJECTION |
| | | ▽=0 | mm INCH | IN/MM | 4:1 | INCH | |
| | | ▽=0 | 4 PLACES ± --- ± --- | DRAWN BY DATE | TITLE HOUSING, PLUG .093/(2.36) DIAMETER | | |
| | | ▽=0 | 3 PLACES ± --- ± .010 | WANG 1997/11/12 | | | |
| | | 2 PLACES ± .25 ± .014 | CHECKED BY DATE | MATERIAL NO. DOCUMENT NO. SEE CHART SD-1619-1P* | | | |
| | | 1 PLACE ± .35 ± --- | RW 1997/11/12 | | | | |
| | | 0 PLACE ± --- ± --- | APPROVED BY DATE | SHEET NO. 1 OF 1 | | | |
| | | | FSMITH 2015/12/23 | | | | |
| ANGULAR ±1/2° DRAFT WHERE APPLICABLE MUST REMAIN WITHIN DIMENSIONS | | | THIS DRAWING CONTAINS INFORMATION THAT IS PROPRIETARY TO MOLEX INCORPORATED AND SHOULD NOT BE USED WITHOUT WRITTEN PERMISSION | | | | |