

可插拔模块 - LDP- 12- 24DC - 2833657

Please be informed that the data shown in this PDF Document is generated from our Online Catalog. Please find the complete data in the user's documentation. Our General Terms of Use for Downloads are valid (<http://download.phoenixcontact.com>)




可插拔模块，带续流二极管和黄色LED，极性：A1+、A2-，输入电压：12 ... 24 V DC ±20 %

为什么选择该产品

- 机械编码以防止错误连接
- 线圈中产生的反向电压衰减



关键商业数据

包装单位	10 STK
最小订货量	20 STK
GTIN	 4 017918 933845
GTIN	4017918933845
海关税则号	8536300000
Sales Key	CK6346

技术数据

标准和规范

连接符合标准	CUL
--------	-----

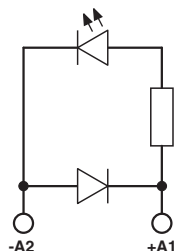
Environmental Product Compliance

China RoHS	环保使用期限：无限期 = EFUP-e
	无超标的有害物质

产品图

可插拔模块 - LDP- 12- 24DC - 2833657

电路图



分类

eCl@ss

eCl@ss 5.0	27371692
eCl@ss 5.1	27371692
eCl@ss 6.0	27379208
eCl@ss 7.0	27379208
eCl@ss 8.0	27379208
eCl@ss 9.0	27371692

ETIM

ETIM 4.0	EC002586
ETIM 5.0	EC002586
ETIM 6.0	EC002586

UNSPSC

UNSPSC 6.01	30211917
UNSPSC 7.0901	39121516
UNSPSC 11	39121516
UNSPSC 12.01	39121516
UNSPSC 13.2	32151504

认证

认证

认证


UL Recognized / cUL Recognized / EAC / EAC / cULus Recognized


防爆认证


认证详情


可插拔模块 - LDP- 12- 24DC - 2833657


认证

UL Recognized		http://database.ul.com/cgi-bin/XYV/template/LISEXT/1FRAME/index.htm	FILE E 140324
---------------	---	---	---------------

cUL Recognized		http://database.ul.com/cgi-bin/XYV/template/LISEXT/1FRAME/index.htm	FILE E 140324
----------------	---	---	---------------

EAC			EAC-Zulassung
-----	---	--	---------------

EAC			RU C- DE.A*30.B.01742
-----	---	--	--------------------------

cULus Recognized		http://database.ul.com/cgi-bin/XYV/template/LISEXT/1FRAME/index.htm	
------------------	---	---	--