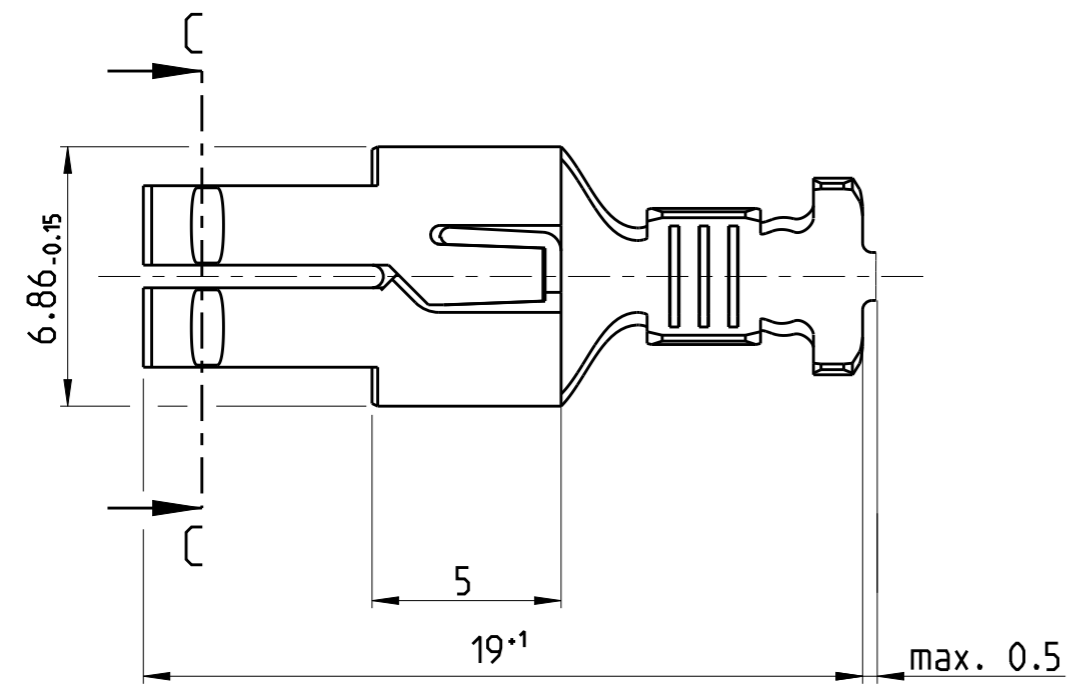
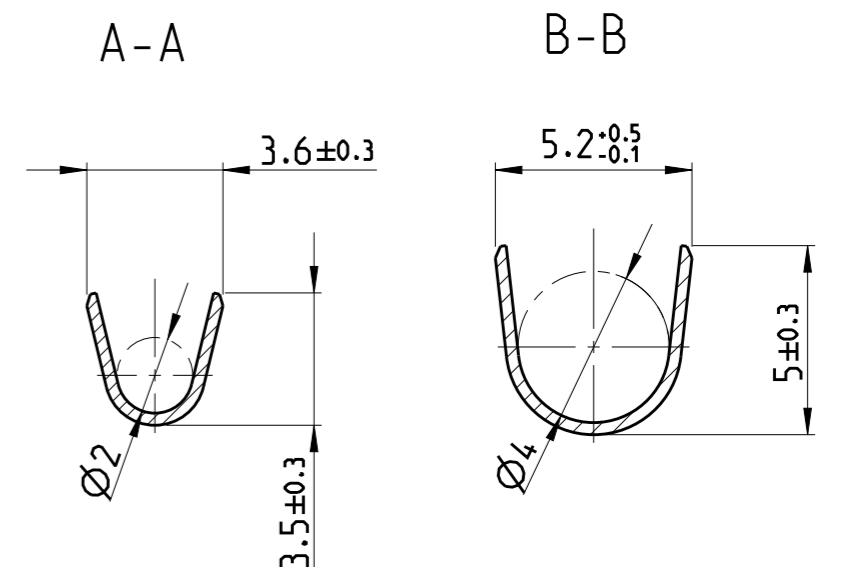
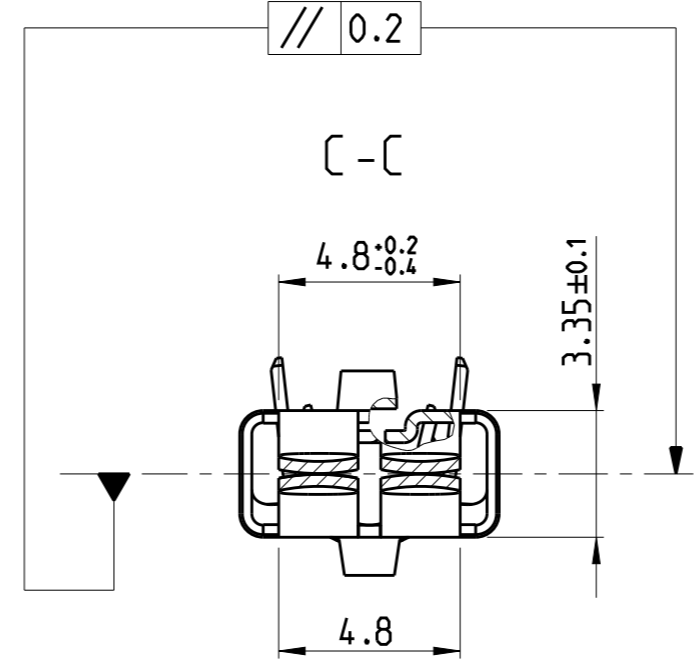
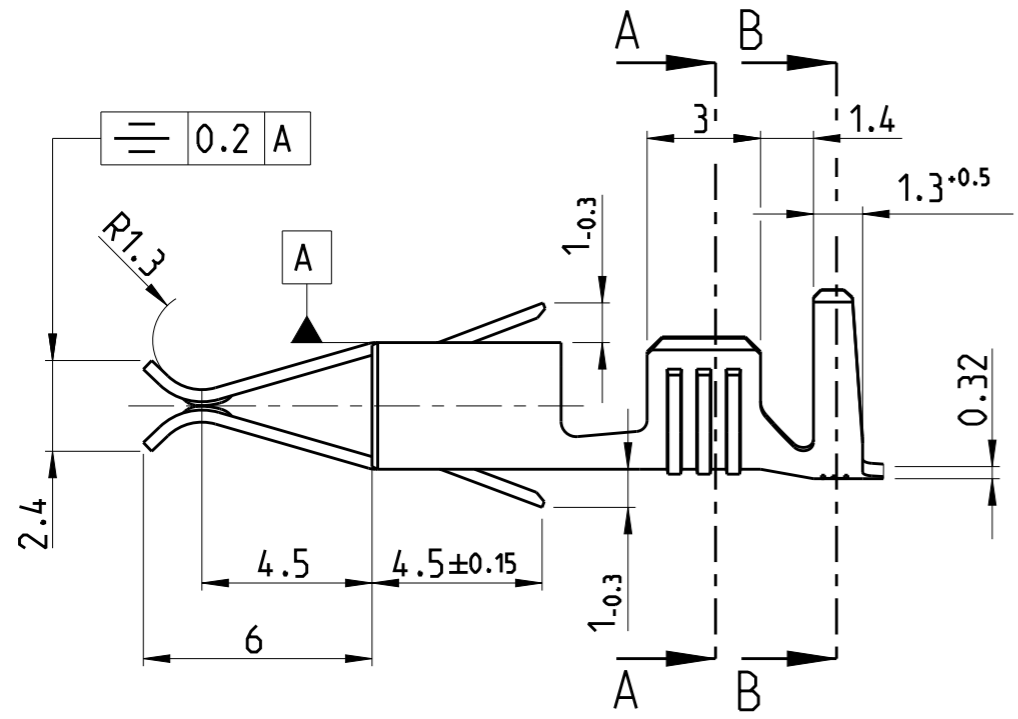


THIS DRAWING IS UNPUBLISHED. RELEASED FOR PUBLICATION 2011
 © COPYRIGHT 2011 ALL RIGHTS RESERVED.

LOC	DIST	REVISIONS					
AL	2	P	LTR	DESCRIPTION	DATE	DWN	APVD
			C3	ECR-15-017138	01DEC2015	KD	RR
			C4	ECR-15-018664	28DEC2015	KD	RR



-	STANDARD-TIMER Kontakt	CuNiSi	964202-4	C
-	STANDARD-TIMER Kontakt	CuFe	964202-3	C
-	STANDARD-TIMER Kontakt	CuSn	964202-2	C
-	STANDARD-TIMER Kontakt	CuZn30	964202-1	C
LOOSE PIECE	FINISH	MATERIAL	PART NO.	REV.

WIRE RANGE: 1.5-2.5 mm²
 INSULATION RANGE: Ø2.4-3.7mm

THIS DRAWING IS A CONTROLLED DOCUMENT.

DIMENSIONS: mm	TOLERANCES UNLESS OTHERWISE SPECIFIED: 0 PLC 1 PLC 2 PLC 3 PLC 4 PLC ANGLES FINISH	±0.2 mm ±1°	DWN ATZMANN 06JAN1994 CHK BARTOSCH 18JAN1994 APVD - PRODUCT SPEC - APPLICATION SPEC - WEIGHT -	STE TE Connectivity NAME STANDARD TIMER CONTACT Kontakt mit zwei Rastfedern	SIZE A3 CAGE CODE - DRAWING NO C-964202 RESTRICTED TO -
MATERIAL -	FINISH -		Customer Drawing	SCALE 5:1	SHEET 1 OF 1

REV C4