

规格确认栏

SPECIFICATION FOR APPROVAL

客户(CUSTOMER): _____

品名(ARTICLE): _____

客户型号(YOUR MODEL No.): PH-D SERIES

客户确认 (CUSTOMER APPROVED BY) :

| | 经理 | | 主管 | | 经办 | |
|------|----|----|----|----|----|----|
| | 签字 | 日期 | 签字 | 日期 | 签字 | 日期 |
| 完全确认 | | | | | | |
| 条件确认 | | | | | | |
| 不予确认 | | | | | | |

意见与建议 (OPINION AND RECOMMEND) :

| | |
|------------------------------|-------------|
| PRODUCT SPECIFICATION | 语言 LANGUAGE |
| | 中文 CHINESE |
| | 英语 ENGLISH |

1. 适用范围 SCOPE

本规格包含 2.0mm 线对板连接器系列

This specification covers the 2.0mm PITCH WIRE TO BOARD CONNECTOR series.

2. 产品名称和型号 PRODUCT NAME AND PART NUMBER

| 产品名称 Product Name | 产品型号 Part Number | 包装数量 packaging |
|---------------------------|---------------------|----------------------------|
| 端子 Terminal (AWG #24-30) | PH-D-PT | |
| 胶壳 Housing | PH-D-2*Y/HK | |
| 针座组装 Wafer Assembly (R/A) | 无铅 LEAD FREE | PH-D-2*A |
| 针座包装 Wafer Assembly (R/A) | 无铅 LEAD FREE | 塑袋包装 (plastic Package) |
| 针座包装 Wafer Assembly (R/A) | 无铅 LEAD FREE | 塑袋包装 (plastic Pckage) |

参照图片 Refer to the drawing

3. 等级和适用电线 RATINGS AND APPLICABLE WIRES

| 项目 Item | 标准 Standard | |
|---|-----------------|-------|
| 最大额定电 Rated Voltage (MAX.) | 250V | |
| 最大额定电流和适用电线 Rated Current (MAX.) and Applicable wires | AWG. #24 | 2.0 A |
| | AWG. #32 | 2.0 A |
| 环境温度范围 Ambient Temperature Range | -25°C ~ +85°C*1 | |

| | | | | | | | | | | | | | | |
|-------|-----|--|--|--|--|--|--|--|--|--|--|--|--|--|
| REV. | B | | | | | | | | | | | | | |
| SHEET | 1-9 | | | | | | | | | | | | | |

| | | | | | | | | | | | | | | | | | |
|---|--------------------------------|---|-------------------------------|-----------------------------|------------------------------|-------------------------------------|--|--|--|--|--|--|--|--|--|--|--|
| 只根据 PC 修订 REVISE ON PC ONLY | | 标题 TITLE: 2.0 间距线对板连接器产品规格书 2.0mm PITCH WIRE TO BOARD SMT CONNECTOR | | | | | | | | | | | | | | | |
| B | 见 1/9 页 SEE SHEET 1 OF 9 | 本文件所含的信息属 BOOMELE 公司所有, 没有书面同意其他人不得使用 THIS DOCUMENT CONTAINS INFORMATION THAT IS PROPRIETARY TO BOOMELE INC. AND SHOULD NOT BE USED WITHOUT WRITTEN PERMISSION | | | | | | | | | | | | | | | |
| | 版本 REV. | 描述 DESCRIPTION | 编制 WRITTEN BY: WUZHENGFANG | 审核 CHECKED BY: LIMINGMAO | 批准 APPROVED BY: LIUXUPING | 日期 DATE: YR/MO/DAY 2008/07/25 | | | | | | | | | | | |
| 设计控制 DESIGN CONTROL CHENGUANGQIAO SUNDIXIONG | STATUS | | | | | | | | | | | | | | | | |

| | | |
|----------------------|----------------|--------------------|
| 文件编号 DOCUMENT NUMBER | 文件名称 FILE NAME | 页数 SHEET 1 OF 9 |
|----------------------|----------------|--------------------|

| | |
|------------------------------|-------------|
| PRODUCT SPECIFICATION | 语言 LANGUAGE |
| | 中文 CHINESE |
| | 英语 ENGLISH |

*1.包括端子温度的上升
Including terminal temperature rise.

| | | | |
|--------------------------------|-----------------------------|--|--------------------|
| 只根据 PC 修订 REVISE ON PC ONLY | | 标题 TITLE: 2.0 间距线对板连接器产品规格书 2.0mm PITCH WIRE TO BOARD SMT CONNECTOR | |
| B | 见 1/9 页 SEE SHEET 1 OF 9 | 本文件所含的信息属 BOOMELE 公司所有，没有书面同意其他人不得使用 THIS DOCUMENT CONTAINS INFORMATION THAT IS PROPRIETARY TO BOOMELE INC. AND SHOULD NOT BE USED WITHOUT WRITTEN PERMISSION | |
| 版本 REV. | 描述 DESCRIPTION | | |
| 文件编号 DOCUMENT NUMBER | | 文件名称 FILE NAME | 页数 SHEET 2 OF 9 |

| | |
|------------------------------|-------------|
| PRODUCT SPECIFICATION | 语言 LANGUAGE |
| | 中文 CHINESE |
| | 英语 ENGLISH |

4. 性能
PERFORMANCE

4-1 . 电性能
ELECTRICAL PERFORMANCE

| 项目 Item | | 测试条件 Test condition | 规格要求 Requirement |
|---------|---|---|---------------------------------|
| 4-1-1 | 接触电阻 Contact Resistance | 插配阴阳连接器后，用小功率电路进行测试。最大电压 10mV ， 电流 20mA Mate connectors, measure by dry circuit,10mV MAX., 20mA. (JIS C5402 5.4) | 最大值 < 10 毫欧 20 milliohm MAX. |
| 4-1-2 | 绝缘电阻 Insulation Resistance | (插配阴阳连接器后,) 在相邻端子或地线和端子之间用 800V 的小功率电路进行测试 (JIS C5402 5.2/MIL-STD-202 测试法 302)Apply 800V DC between adjacent terminals or terminal and ground .(JIS C54025.2/MIL-STD-202 Method 302) | 最小值 100 兆欧姆 100 Megohm MIN. |
| 4-1-3 | 耐压强度/绝缘强度 Dielectric Strength | 用 800V 电压在相邻端子或地线和端子之间进行测试 1 分钟 Apply 800V AC(rms) between adjacent terminals or terminal and ground for 1 minute. (JIS C5402 5.1/MIL-STD-202 Method 301) (JIS C5402 5.1/MIL-STD-202 测试法 301) | 无击穿和飞弧现象 No Breakdown |
| 4-1-4 | 压线部位接触电阻 Contact Resistance on Crimped Portion | 10mV MAX., 20mA. 用适合的电线将端子压线，然后用小功率电路进行电阻测试。最大电压 20mV， 电流 10mA Crimp the applicable wire to the terminal, and measure contact resistance by dry circuit, | 最大值 5 毫欧 5 milliohm MAX. |

| | | | |
|--------------------------------|-----------------------------|--|--------------------|
| 只根据 PC 修订 REVISE ON PC ONLY | | 标题 TITLE: 2.0 间距线对板连接器产品规格书 2.0mm PITCH WIRE TO BOARD SMT CONNECTOR | |
| B | 见 1/9 页 SEE SHEET 1 OF 9 | 本文件所含的信息属 BOOMELE 公司所有，没有书面同意其他人不得使用 THIS DOCUMENT CONTAINS INFORMATION THAT IS PROPRIETARY TO BOOMELE INC. AND SHOULD NOT BE USED WITHOUT WRITTEN PERMISSION | |
| | | 版本 REV. | 描述 DESCRIPTION |
| 文件编号 DOCUMENT NUMBER | | 文件名称 FILE NAME | 页数 SHEET 3 OF 9 |

| | |
|------------------------------|-------------|
| PRODUCT SPECIFICATION | 语言 LANGUAGE |
| | 中文 CHINESE |
| | 英语 ENGLISH |

4-2 . 机械性能 MECHANICAL PERFORMANCE

| 项目 Item | | 测试条件 Test condition | 规格要求 Requirement |
|---------|--|---|-------------------------------|
| 4-2-1 | 插入力和拔出力 Insertion and Withdrawal Force | 以每分钟 25+3mm 的速度拔出，插入连接器 Insert and withdraw connectors at the speed rate of 25+ 3mm/minute. | 7 参考第七段 Refer to paragraph |
| 4-2-2 | 压线强度 Crimping Strength | 固定压好线的端子，以每分钟 25+3mm 的速度沿 着轴线拔出线 Fix the crimped terminal, apply axial pull out force on the wire at the speed rate of 25+ 3mm/minute. | AWG. #24 9.8 N 1.0kgf MIN. |
| | | | AWG. #32 4.9 N 0.5kgf MIN. |
| 4-2-3 | 端子插入力 Terminal Insertion Force | 将已经压好线对端子插入胶壳 Insert the crimped terminal into the housing | 4.9 N 0.5kgf MAX. |
| 4-2-4 | 端子和胶壳的固 定力 Terminal/ Housing Retention Force | 以每分钟 25+3mm 的速度，沿着轴线将装在胶壳 里的端子拔出 Apply axial pull out force to the terminal assembled in the housing at the speed rate of 25 +3mm/minute. | 4.9 N 0.5kgf MIN. |
| 4-2-5 | 针对固定力 Pin Retention Force | 以每分钟 25+3mm 的速度，沿着轴线将针拔出 Apply axial push force at the speed rate of 25+ 3mm/minute. | 4.9 N 0.5kgf MIN. |

| | | | |
|--------------------------------|-----------------------------|---|--------------------|
| 只根据 PC 修订 REVISE ON PC ONLY | | 标题 TITLE: 2.0 间距线对板连接器产品规格书 2.0mm PITCH WIRE TO BOARD SMT CONNECTOR | |
| B | 见 1/9 页 SEE SHEET 1 OF 9 | 本文件所含的信息属 BOOMELE 公司所有，没有书面同意其他人不得使用 THIS DOCUMENT CONTAINS INFORMATION THAT IS PROPRIETARY TO BOOMELE INC. AND SHOULD NOT BE USED WITHOUT WRITTEN PERMISSION | |
| | | 版本 REV. | 描述 DESCRIPTION |
| 文件编号 DOCUMENT NUMBER | | 文件名称 FILE NAME | 页数 SHEET 4 OF 9 |

| | |
|------------------------------|-------------|
| PRODUCT SPECIFICATION | 语言 LANGUAGE |
| | 中文 CHINESE |
| | 英语 ENGLISH |

4-2 . 机械性能 MECHANICAL PERFORMANCE

| 项目 Item | | 测试条件 Test condition | 规格要求 Requirement | |
|---------|---|--|----------------------------|------------------------------|
| 4-3-1 | 机械寿命 Repeated Insertion/ Withdrawal | 以每分钟插拔 10 次的速度插拔 30 次。 When mated up to 30 cycles repeatedly by the rate of 10 cycles per minute. | 接触电阻 Contact Resistance | 最大 40 毫欧 40 milliohm MAX. |
| 4-3-2 | 温度上升 Temperature Rise | 通以最大额定电流 (UL 498) Carrying rated current load. (UL 498) | 温度上升 Temperature Rise | 最大 30 摄氏度 30 MAX. |
| 4-3-3 | 振动 Vibration | Amplitude 振幅 1.5mm P-P SWEEP TIME: 扫描时间: 10-55-10 Hz in 1 minute 每分钟 10-55-10 赫兹 Duration: 持续时间: 2 hours in each x.y.z. axes X.Y.Z 三轴各 2 小时 (MIL-STD-202 Method 201) (MIL-STD-202 测试法 201) | 外观 Appearance | 无损伤 No Damage |
| | | | 接触电阻 Contact Resistance | 最大 40 毫欧 40 milliohm MAX. |
| | | | 中断 Discontinuity | 最大 1 微秒 1.0 microsecond MAX. |
| 4-3-4 | 耐冲击性 Shock | 490m/s2 {50G}, 3 strokes in each X.Y.Z. axes. (JIS C60068-2-27/MIL-STD-202 Method 213) 490m/s2 {50G}, X.Y.Z 轴各 3 击 (JIS C60068-2-27/MIL-STD-202 测试法 213) | 外观 Appearance | 无损伤 No Damage |
| | | | 接触电阻 Contact Resistance | 最大 40 毫欧 40 milliohm MAX. |
| | | | 中断 Discontinuity | 最大 1 微秒 1.0 microsecond MAX. |
| 4-3-5 | 耐热性 Heat Resistance | 85 2 96 hours (JIS C60068-2-2/MIL-STD-202 Method 108)在 83 到 87 摄氏度的环境中放置 (JIS C60068-2-2/MIL-STD-202 测试法 108) | 外观 Appearance | 无损伤 No Damage |
| | | | 接触电阻 Contact Resistance | 最大 40 毫欧 40 milliohm MAX. |

| | | | | |
|--------------------------------|-----------------------------|---|-------------------|--------------------|
| 只根据 PC 修订 REVISE ON PC ONLY | | 标题 TITLE: 2.0 间距线对板连接器产品规格书 2.0mm PITCH WIRE TO BOARD SMT CONNECTOR | | |
| B | 见 1/9 页 SEE SHEET 1 OF 9 | 本文件所含的信息属 BOOMELE 公司所有, 没有书面同意其他人不得使用 THIS DOCUMENT CONTAINS INFORMATION THAT IS PROPRIETARY TO BOOMELE INC. AND SHOULD NOT BE USED WITHOUT WRITTEN PERMISSION | | |
| | | 版本 REV. | 描述 DESCRIPTION | |
| 文件编号 DOCUMENT NUMBER | | | 文件名称 FILE NAME | 页数 SHEET 5 OF 9 |

| | |
|------------------------------|-------------|
| PRODUCT SPECIFICATION | 语言 LANGUAGE |
| | 中文 CHINESE |
| | 英语 ENGLISH |

| 项目 Item | | 测试条件 Test condition | 规格要求 Requirement | |
|---------|--------------------------------|--|-----------------------------|-----------------------------|
| 4-3-6 | 耐寒性 Cold Resistance | 在零下 37 到零下 43 摄氏度的环境下放置 96 小时(JIS C60068-2-1) | 外观 Appearance | 无损伤 No Damage |
| | | | 接触电阻 Contact Resistance | 最大 40 毫欧 40 milliohm MAX. |
| 4-3-7 | 耐 湿 性 Humidity | 温度 58-62 摄氏度 Temperature 58-62 相对湿度 90-95% Relative Humidity 90-95% 持续时间: 96 小时 Duration 96 hours (JIS C60068-2-3/MIL-STD-202 Method 103)(JIS C60068-2-3/MIL-STD-202 测试法 103) | 外观 Appearance | 无损伤 No Damage |
| | | | 接触电阻 Contact Resistance | 最大 40 毫欧 40 milliohm MAX. |
| | | | 耐压强度 Dielectric Strength | 满足 4-1-3 Must meet 4-1-3 |
| | | | 绝缘电阻 Insulation Resistance | 最小 10 兆欧姆 10MegohmMIN. |
| 4-3-8 | 温 度 循 环 Temperature Cycling | 5 cycles of : a) - 55 30minute b) +105 30minute (JIS C0025) a)在零下 55 摄氏度放置 30 分钟 b) 在岭上 105 摄氏度放置 30 分钟, 5 个这样的循环(JIS C0025) | 外观 Appearance | 无损伤 No Damage |
| | | | 接触电阻 Contact Resistance | 最大 40 毫欧 40 milliohm MAX. |
| 4-3-9 | 盐 雾 Salt Spray | 48 4 hours exposure to a salt spray from the 5 1% solution at 35 2 . (JIS C5028/MIL-STD-202 Method 101) 在 33-35 摄氏度的环境中, 采用浓度为 4-6%的氯化钠溶液, 连续雾化 44-52 小时, 然后再水中洗净, 在室内干燥 | 外观 Appearance | 无损伤 No Damage |
| | | | 接触电阻 Contact Resistance | 最大 40 毫欧 40 milliohm MAX. |

| | | | |
|--------------------------------|-----------------------------|---|--------------------|
| 只根据 PC 修订 REVISE ON PC ONLY | | 标题 TITLE: 2.0 间距线对板连接器产品规格书 2.0mm PITCH WIRE TO BOARD SMT CONNECTOR | |
| B | 见 1/9 页 SEE SHEET 1 OF 9 | 本文件所含的信息属 BOOMELE 公司所有, 没有书面同意其他人不得使用 THIS DOCUMENT CONTAINS INFORMATION THAT IS PROPRIETARY TO BOOMELE INC. AND SHOULD NOT BE USED WITHOUT WRITTEN PERMISSION | |
| | | | |
| 文件编号 DOCUMENT NUMBER | | 文件名称 FILE NAME | 页数 SHEET 6 OF 9 |

| | |
|------------------------------|-------------|
| PRODUCT SPECIFICATION | 语言 LANGUAGE |
| | 中文 CHINESE |
| | 英语 ENGLISH |

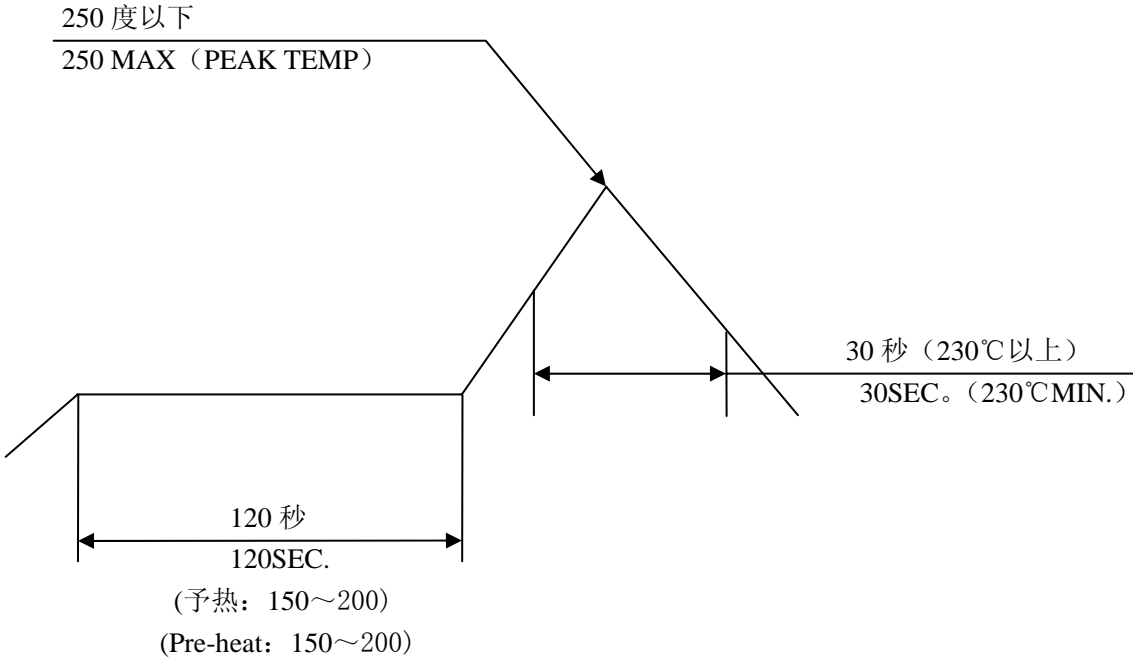
| | | | | |
|----------------------|--------------------------------------|--|-------------------------|--|
| 4-3-10 | 亚硫酸气体 SO2 Gas | 在 38-42 摄氏度的温度下在 45-5ppm 亚硫酸气体中放置 24 小时 24 hours expose to 50 5ppm . SO2 gas at 40 2 . | 外观 Appearance | 无损伤 No Damage |
| | | | 接触电阻 Contact Resistance | 最大 40 毫欧 40 milliohm MAX. |
| 4-3-11 | 氨气 NH3 Gas | 在从 28%的氨气溶液中蒸发出来的氨气中暴露 40 分钟 40 minutes exposure to NH3 gas evaporating from 28% Ammonia solution. | 外观 Appearance | 无损伤 No Damage |
| | | | 接触电阻 Contact Resistance | 最大 40 毫欧 40 milliohm MAX. |
| 4-3-12 | 可焊性 Solderability | 焊接时间: 2-3 秒, 焊接温度 242-248 摄氏度, 从端子顶到接头顶 0.5mm Soldering Time 2 3 sec. Solder Temperature 245 3 0.5mm from terminal tip and fitting nail tip. | 焊锡附着性 Solder Wetting | 95%浸泡的地方没有间点和小孔 95 of immersed area must show no voids, pin holes |
| 4-3-13 | 耐焊热性 Resistance To Soldering Heat | 软熔发亮处理, 重复第六段 When reflowing Repeat paragraph 6. | 无损伤 No Damage | |
| | | Soldering iron method 焊铁方法 Soldering time : 3 1 sec. 焊接时间: 2-4 秒 Solder temperature 370 400 焊接温度 370-400 摄氏度 0.5mm from terminal tip and fitting nail tip 从端子顶到接头顶 0.5mm | | |
| () : 参考规格 REFERENCE | | | | |

| | | | | |
|--------------------------------|-----------------------------|---|-------------------|--------------------|
| 只根据 PC 修订 REVISE ON PC ONLY | | 标题 TITLE: 2.0 间距线对板连接器产品规格书 2.0mm PITCH WIRE TO BOARD SMT CONNECTOR | | |
| B | 见 1/9 页 SEE SHEET 1 OF 9 | 本文件所含的信息属 BOOMELE 公司所有, 没有书面同意其他人不得使用 THIS DOCUMENT CONTAINS INFORMATION THAT IS PROPRIETARY TO BOOMELE INC. AND SHOULD NOT BE USED WITHOUT WRITTEN PERMISSION | | |
| | | 版本 REV. | 描述 DESCRIPTION | |
| 文件编号 DOCUMENT NUMBER | | | 文件名称 FILE NAME | 页数 SHEET 7 OF 9 |
| EN-37-1 (019) | | | | |

| | |
|------------------------------|-------------|
| PRODUCT SPECIFICATION | 语言 LANGUAGE |
| | 中文 CHINESE |
| | 英语 ENGLISH |

Standard

- 5. 产品形状，尺寸和材料 PRODUCT SHAPE, DIMENSIONS AND MATERIALS
参考图纸 Refer to the drawing
- 6. 红外线回流（软熔）条件 INFRARED REFLOW CONDITION



注 明：请先根据你自己的设备检查一下软熔焊剂条件，因为该条件是随着焊接设备，P.C.板等的不同而不同的。
NOTE : Please check the reflow soldering condition by your own devices beforehand. Because the condition changes by the soldering devices, P.C.Boards, and so on.

| | | | |
|--------------------------------|-----------------------------|---|--------------------|
| 只根据 PC 修订 REVISE ON PC ONLY | | 标题 TITLE: 2.0 间距线对板连接器产品规格书 2.0mm PITCH WIRE TO BOARD SMT CONNECTOR | |
| B | 见 1/9 页 SEE SHEET 1 OF 9 | 本文件所含的信息属 BOOMELE 公司所有，没有书面同意其他人不得使用 THIS DOCUMENT CONTAINS INFORMATION THAT IS PROPRIETARY TO BOOMELE INAND SHOULD NOT BE USED WITHOUT WRITTEN PERMISSION | |
| | | | |
| 版本 REV. | 描述 DESCRIPTION | 文件名称 FILE NAME | 页数 SHEET 8 OF 9 |
| 文件编号 DOCUMENT NUMBER | | | |
| EN-37-1 (019) | | | |

| | |
|------------------------------|-------------|
| PRODUCT SPECIFICATION | 语言 LANGUAGE |
| | 中文 CHINESE |
| | 英语 ENGLISH |

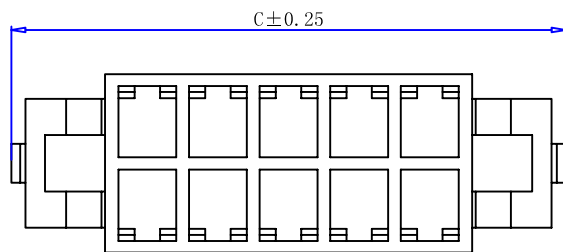
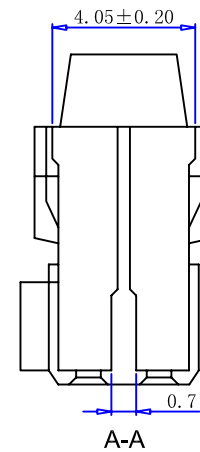
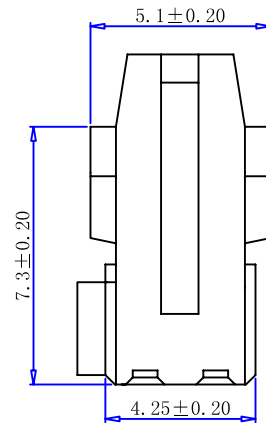
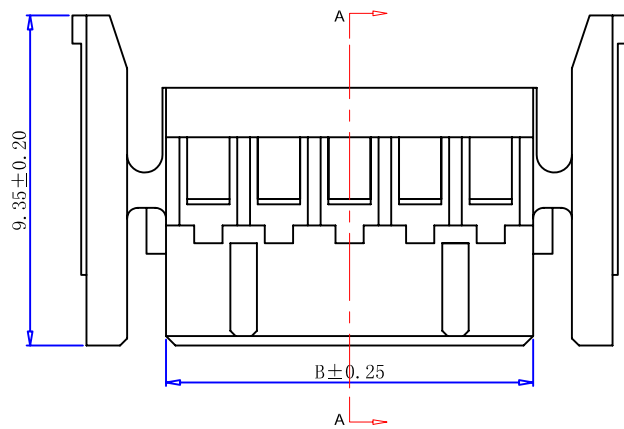
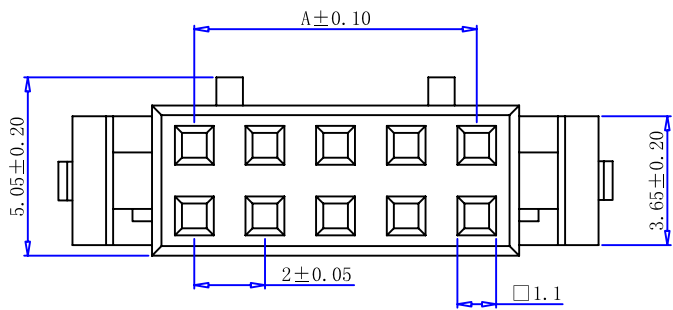
7. 插入/拔出力 INSERTION / WITHDRAWAL FORCE

| 单位 (N) Unit (N) | | 单孔 monotrematous | | | | |
|---|-------------------------|---------------------|------------|------------|-------------|------------|
| | | 试样一 | 试样二 | 试样三 | 试样四 | 试样五 |
| 胶壳与针座 housing and wafer | 插入力 Insertion force | 1 5N | 2 5N | 3 5.5N | 4 5.5N | 5 5N |
| | 拔出力 Withdrawal force | 1 6N | 2 6N | 3 6N | 4 6N | 5 6N |
| 胶壳与端子 housing and terminal | 插入力 Insertion force | 1 0.25N | 2 0.25N | 3 0.25N | 4 0.25 N | 5 0.25N |
| | 拔出力 Withdrawal force | 1 15.2N | 2 15N | 3 15N | 4 15 N | 5 15N |
| 带叶胶壳与端子 Hootype housing and terminal | 插入力 Insertion force | 1 0.25N | 2 0.25N | 3 0.25N | 4 0.25 N | 5 0.25N |
| | 拔出力 Withdrawal force | 1 15.2N | 2 15N | 3 15N | 4 15 N | 5 15N |

注明：胶壳与针座（housing and wafer）

插入力与拔出力为压线后端子与胶壳、针座相配套组装后测试所得的值

| | | | | |
|--------------------------------|-----------------------------|--|--------------------|--|
| 只根据 PC 修订 REVISE ON PC ONLY | | 标题 TITLE: 2.0 间距线对板连接器产品规格书 2.0mm PITCH WIRE TO BOARD SMT CONNECTOR | | |
| B | 见 1/9 页 SEE SHEET 1 OF 9 | 本文件所含的信息属 BOOMELE 公司所有，没有书面同意其他人不得使用 THIS DOCUMENT CONTAINS INFORMATION THAT IS PROPRIETARY TO BOOMELE INC. AND SHOULD NOT BE USED WITHOUT WRITTEN PERMISSION | | |
| | | 版本 REV. | 描述 DESCRIPTION | |
| 文件编号 DOCUMENT NUMBER | | 文件名称 FILE NAME | 页数 SHEET 9 OF 9 | |
| EN-37-1(019) | | | | |



| Poles | PART NO | A | B | C |
|-------|---------|-------|-------|-------|
| 04 | PH-2×2 | 2.00 | 4.40 | 9.70 |
| 06 | PH-2×3 | 4.00 | 6.40 | 11.70 |
| 08 | PH-2×4 | 6.00 | 8.40 | 13.70 |
| 10 | PH-2×5 | 8.00 | 10.40 | 15.70 |
| 12 | PH-2×6 | 10.00 | 12.40 | 17.70 |
| 14 | PH-2×7 | 12.00 | 14.40 | 19.70 |
| 16 | PH-2×8 | 14.00 | 16.40 | 21.70 |
| 18 | PH-2×9 | 16.00 | 18.40 | 23.70 |
| 20 | PH-2×10 | 18.00 | 20.40 | 25.70 |
| 22 | PH-2×11 | 20.00 | 22.40 | 27.70 |
| 24 | PH-2×12 | 22.00 | 24.40 | 29.70 |
| 26 | PH-2×13 | 24.00 | 26.40 | 31.70 |
| 28 | PH-2×14 | 26.00 | 28.40 | 33.70 |
| 30 | PH-2×15 | 28.00 | 30.40 | 35.70 |
| 32 | PH-2×16 | 30.00 | 32.40 | 37.70 |
| 34 | PH-2×17 | 32.00 | 34.40 | 39.70 |
| 36 | PH-2×18 | 34.00 | 36.40 | 41.70 |
| 38 | PH-2×19 | 36.00 | 38.40 | 43.70 |
| 40 | PH-2×20 | 38.00 | 40.40 | 45.70 |

| | | | | |
|--------------------------------------|---|--------------------------------|---------------------------------|------------------------|
| UNIT: MM | TYPE: CONNECTOR | MODEL NO: PH-D-2×nY-HK | 日期 DATE YR/MO/DAY 08.7.25 | 页次1 OF 1 PAGE1 OF 1 |
| 设计控制 DESIGNER BY CHENGUANGQIAO | 文件编号 DOCUMENT NUMBER QJ/BM-05-PHD-052 | 未注公差 TOLERANCE ±0.15 | 角度公差 ANGLES ±1.5° | 比例 SCALE FIT |
| 绘制 DRAFTSMAN BY WUZHENG FANG | 审核 CHECKED BY LIMINGMAO | 批准 APPROVED BY LIUXUPING | 供应商 COME OUT WITH BOOMELE | 版本 VER 1.0 |

1 2 3 4 5 6

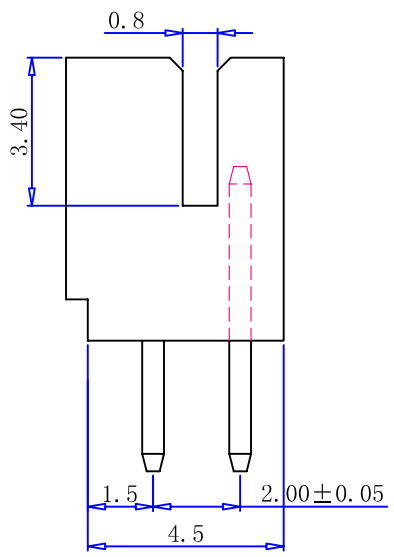
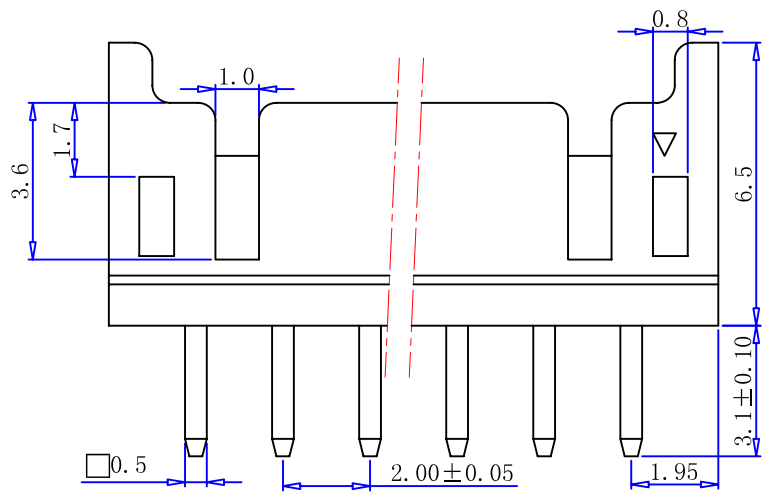
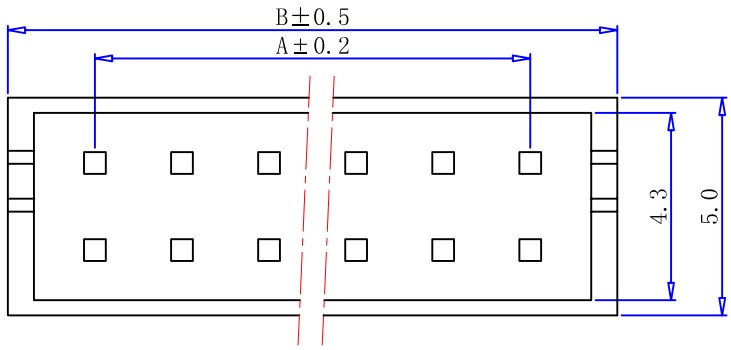
A

B

C

D

E



一般公差: X.X 0.25
 X.XX 0.15
 X.XXX 0.05

| 版次 | 日期 | 变更内容 | 变更单号 | 变更者 |
|-----|----|------|------|-----|
| 1.0 | | 原始版本 | | |

| Poles | PART NO | A | B |
|-------|---------|-------|-------|
| 08 | PH-2×4 | 6.00 | 9.90 |
| 10 | PH-2×5 | 8.00 | 11.90 |
| 12 | PH-2×6 | 10.00 | 13.90 |
| 14 | PH-2×7 | 12.00 | 15.90 |
| 16 | PH-2×8 | 14.00 | 17.90 |
| 18 | PH-2×9 | 16.00 | 19.90 |
| 20 | PH-2×10 | 18.00 | 21.90 |
| 22 | PH-2×11 | 20.00 | 23.90 |
| 24 | PH-2×12 | 22.00 | 25.90 |
| 26 | PH-2×13 | 24.00 | 27.90 |
| 28 | PH-2×14 | 26.00 | 29.90 |
| 30 | PH-2×15 | 28.00 | 31.90 |
| 32 | PH-2×16 | 30.00 | 33.90 |
| 34 | PH-2×17 | 32.00 | 35.90 |
| 36 | PH-2×18 | 34.00 | 37.90 |
| 38 | PH-2×19 | 36.00 | 39.90 |
| 40 | PH-2×20 | 38.00 | 41.90 |

A

B

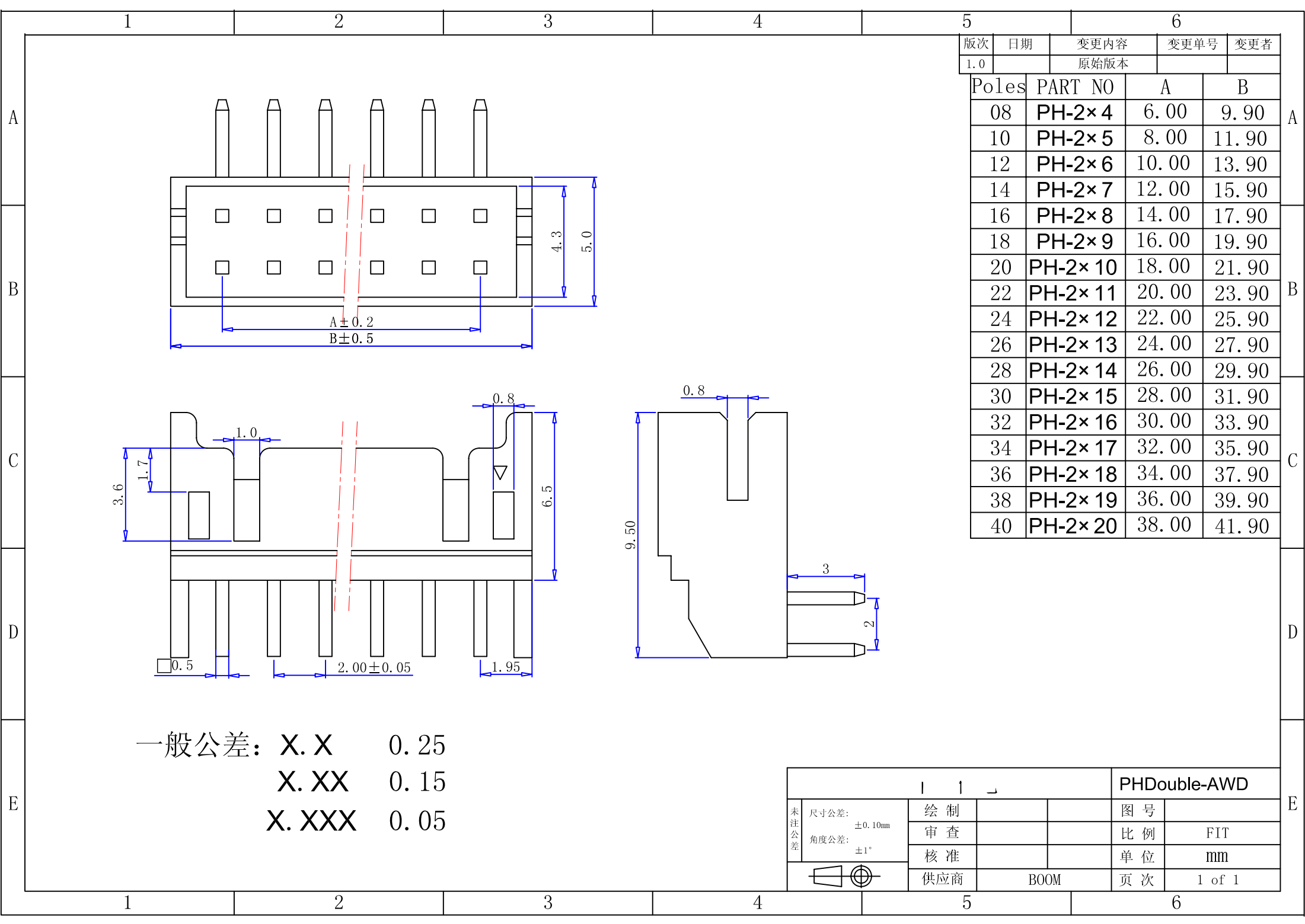
C

D

E

| | | | | |
|------|------------------|-----|------------|--------|
| | | | PHDouble-A | |
| 未注公差 | 尺寸公差: ±0.10mm | 绘制 | | 图号 |
| | 角度公差: ±1° | 审查 | | 比例 |
| | | 核准 | | 单位 |
| | | 供应商 | BOOM | 页次 |
| | | | | 1 of 1 |

1 2 3 4 5 6

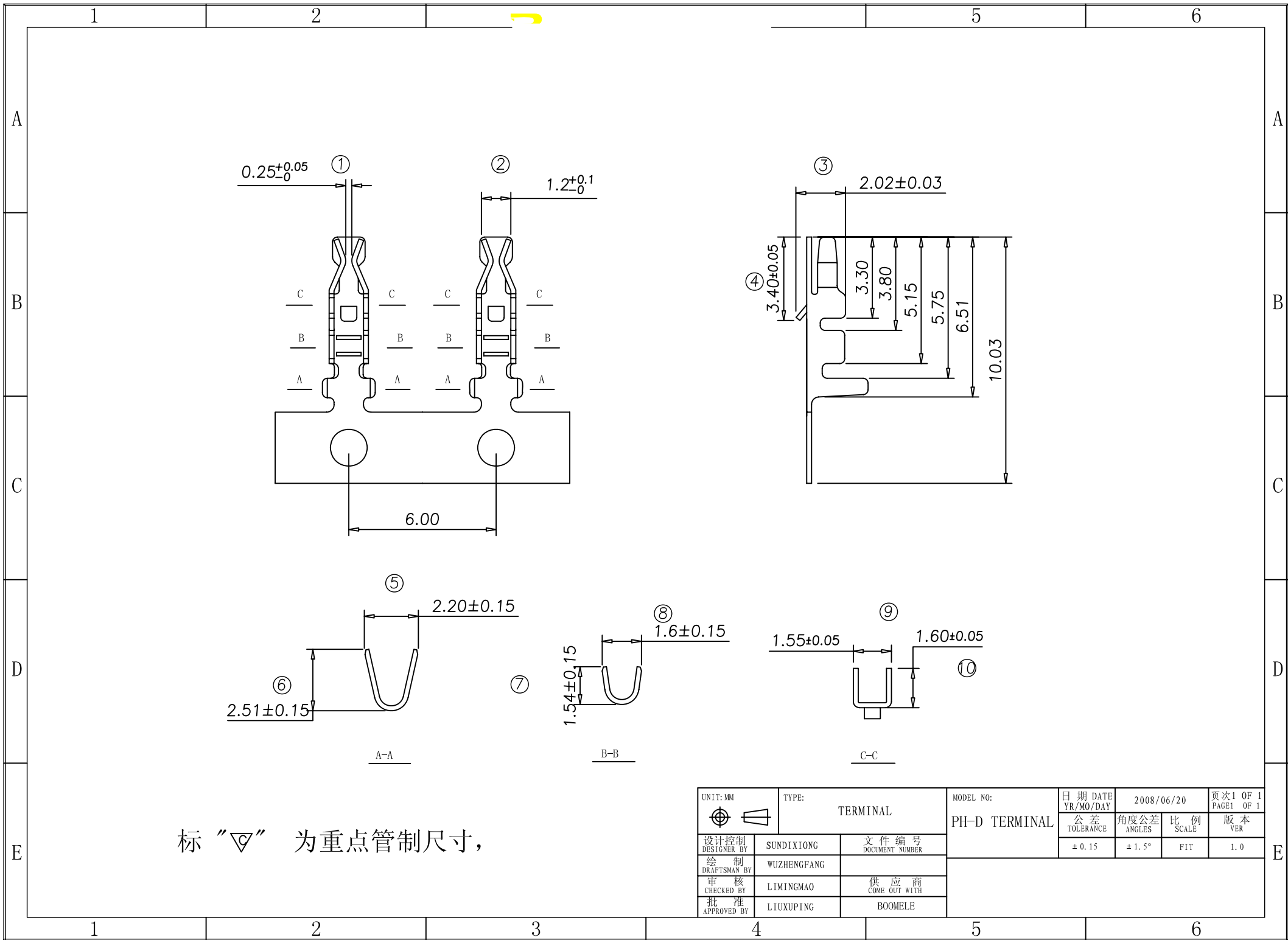


| 版次 | 日期 | 变更内容 | 变更单号 | 变更者 |
|-----|----|------|------|-----|
| 1.0 | | 原始版本 | | |

| Poles | PART NO | A | B |
|-------|---------|-------|-------|
| 08 | PH-2×4 | 6.00 | 9.90 |
| 10 | PH-2×5 | 8.00 | 11.90 |
| 12 | PH-2×6 | 10.00 | 13.90 |
| 14 | PH-2×7 | 12.00 | 15.90 |
| 16 | PH-2×8 | 14.00 | 17.90 |
| 18 | PH-2×9 | 16.00 | 19.90 |
| 20 | PH-2×10 | 18.00 | 21.90 |
| 22 | PH-2×11 | 20.00 | 23.90 |
| 24 | PH-2×12 | 22.00 | 25.90 |
| 26 | PH-2×13 | 24.00 | 27.90 |
| 28 | PH-2×14 | 26.00 | 29.90 |
| 30 | PH-2×15 | 28.00 | 31.90 |
| 32 | PH-2×16 | 30.00 | 33.90 |
| 34 | PH-2×17 | 32.00 | 35.90 |
| 36 | PH-2×18 | 34.00 | 37.90 |
| 38 | PH-2×19 | 36.00 | 39.90 |
| 40 | PH-2×20 | 38.00 | 41.90 |

一般公差: X.X 0.25
 X.XX 0.15
 X.XXX 0.05

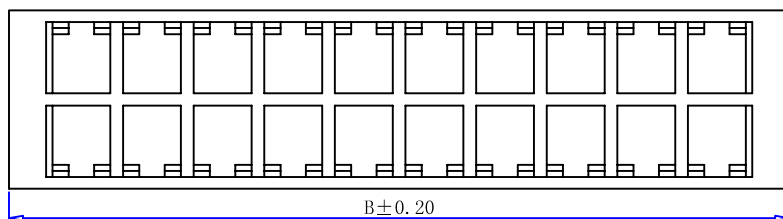
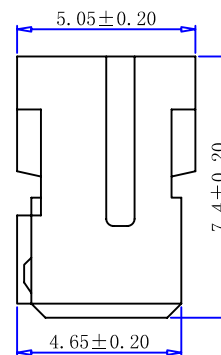
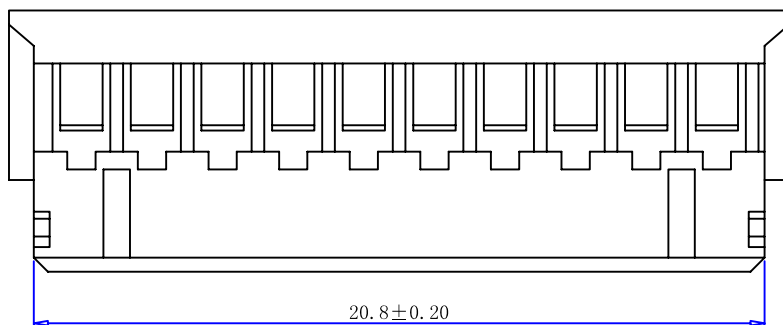
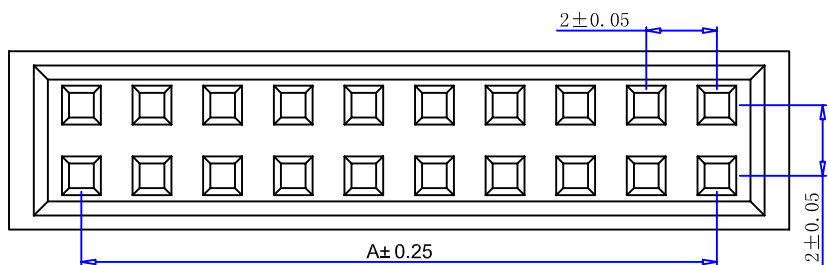
| | | | | |
|------|---------------------|-----|--------------|--------|
| | | | PHDouble-AWD | |
| 未注公差 | 尺寸公差: | 绘制 | 图号 | |
| | $\pm 0.10\text{mm}$ | 审查 | 比例 | FIT |
| | 角度公差: | 核准 | 单位 | mm |
| | $\pm 1^\circ$ | 供应商 | BOOM | 页次 |
| | | | | 1 of 1 |



标“▽”为重点管制尺寸，

| | | | | |
|------------------------------------|--------------------------------|---------------------------------|------------------------------------|--------------------------|
| UNIT: MM | TYPE: TERMINAL | MODEL NO: PH-D TERMINAL | 日期 DATE YR/MO/DAY 2008/06/20 | 页次 1 OF 1 PAGE 1 OF 1 |
| 设计控制 DESIGNER BY SUNDIXIONG | 文件编号 DOCUMENT NUMBER | 公差 TOLERANCE ± 0.15 | 角度公差 ANGLES ± 1.5° | 比例 SCALE FIT |
| 绘制 DRAFTSMAN BY WUZHENG FANG | 审核 CHECKED BY LIMING MAO | 供应商 COME OUT WITH BOOMELE | 版本 VER 1.0 | |
| 批准 APPROVED BY LIUXUPING | | | | |

BOOMELE



| Poles | PART NO | A | B |
|-------|---------|-------|------|
| 04 | PH-2×2 | 2.00 | 5.9 |
| 06 | PH-2×3 | 4.00 | 7.9 |
| 08 | PH-2×4 | 6.00 | 9.9 |
| 10 | PH-2×5 | 8.00 | 11.9 |
| 12 | PH-2×6 | 10.00 | 13.9 |
| 14 | PH-2×7 | 12.00 | 15.9 |
| 16 | PH-2×8 | 14.00 | 17.9 |
| 18 | PH-2×9 | 16.00 | 19.9 |
| 20 | PH-2×10 | 18.00 | 21.9 |
| 22 | PH-2×11 | 20.00 | 23.9 |
| 24 | PH-2×12 | 22.00 | 25.9 |
| 26 | PH-2×13 | 24.00 | 27.9 |
| 28 | PH-2×14 | 26.00 | 29.9 |
| 30 | PH-2×15 | 28.00 | 31.9 |
| 32 | PH-2×16 | 30.00 | 33.9 |
| 34 | PH-2×17 | 32.00 | 35.9 |
| 36 | PH-2×18 | 34.00 | 37.9 |
| 38 | PH-2×19 | 36.00 | 39.9 |
| 40 | PH-2×20 | 38.00 | 41.9 |

| | | | | |
|--------------------------------------|-------------------------------|-----------------------------|---------------------------------|------------------------|
| UNIT: MM | TYPE: CONNECTOR | MODEL NO: PH-D-2×nY | 日期 DATE YR/MO/DAY 08.7.25 | 页次1 OF 1 PAGE1 OF 1 |
| 设计控制 DESIGNER BY CHENGUANGQIAO | 文件编号 DOCUMENT NUMBER | 未注公差 TOLERANCE ± 0.15 | 角度公差 ANGLES ± 1.5° | 比例 SCALE FIT |
| 绘制 DRAFTSMAN BY WUZHENG FANG | 审核 CHECKED BY LIMINGMAO | 供应商 COME OUT WITH | 版本 VER 1.0 | |
| 批准 APPROVED BY LIUXUPING | BOOMELE | | | |