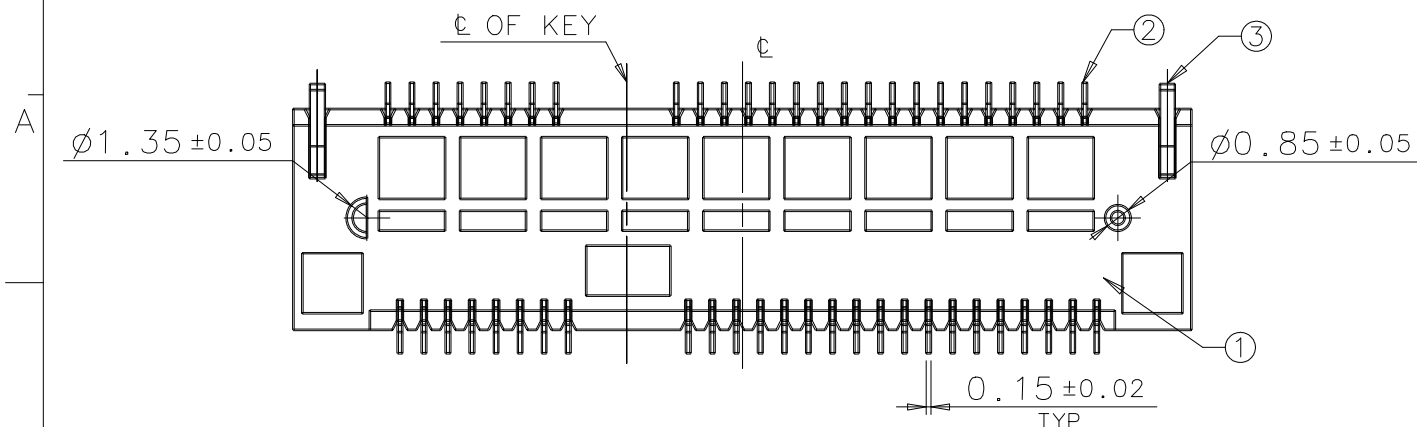


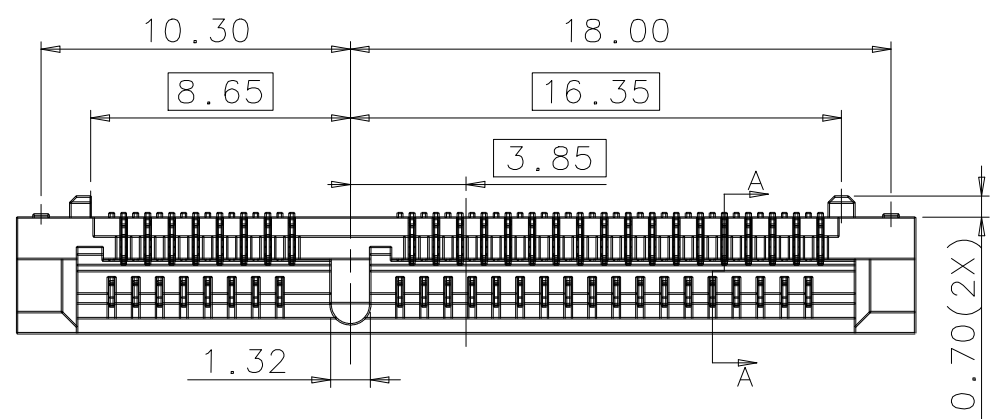
IDEAS GENERATED DRAWING, DO NOT CHANGE BY HAND

REV.	ECN. NO.	APPD.
A	BC-10-0110156	Herry Yang
B	BC-11-0000238	Herry Yang
C	BC-11-0053912	Herry Yang
D	BC-11-0072420	Herry Yang
E	BC-12-0005082	Y.H.Mao
F	BC-12-0005952	Y.H.Mao
G	BC-13-0020848	C.S.Li



NOTES:

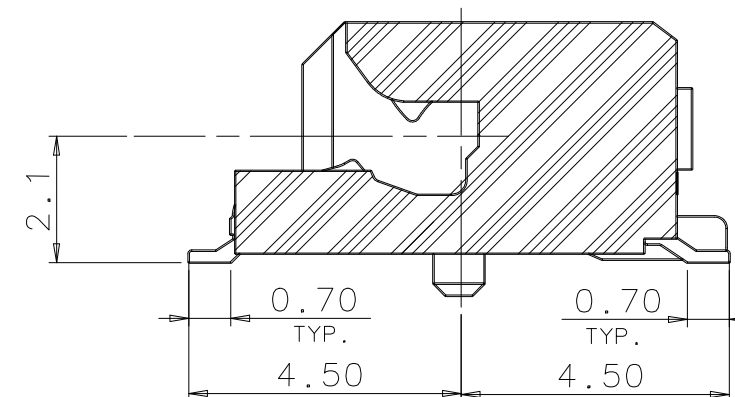
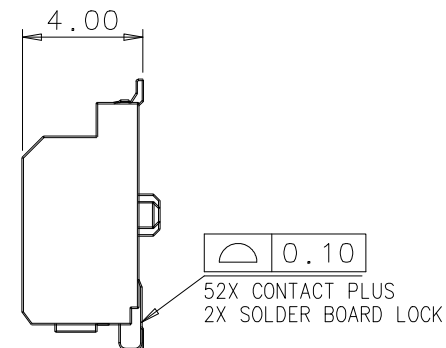
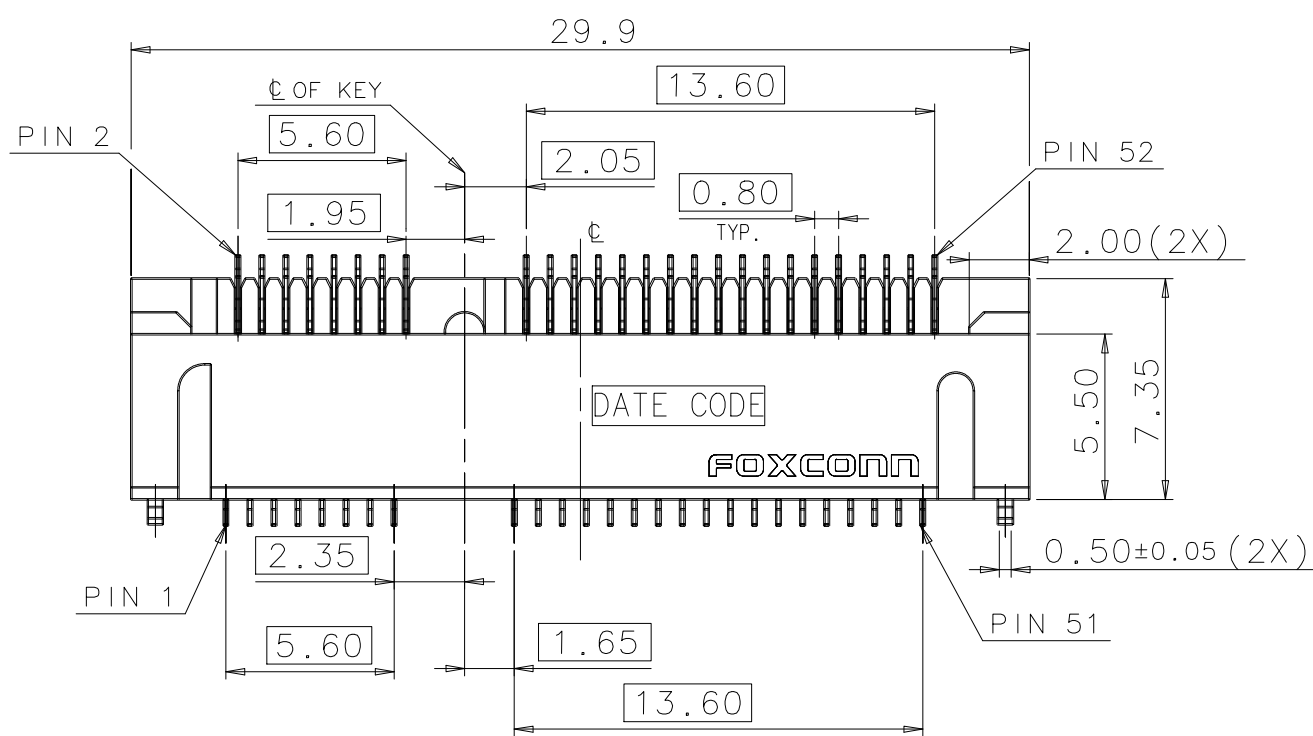
- ELECTRICAL CHARACTERISTICS:
 - CONTACT CURRENT RATING: 0.5 AMPERE MAX. PER PIN.
(PER PIN) DOESN'T EXCEED 30°C ABOVE AMBIENT AT 0.5 AMPERE MAX. PER PIN.
 - VOLTAGE RATING: 50V AC.
 - INSULATION RESISTANCE: 500 MEGAOHMS MIN. AT 500V DC.
 - DIELECTRIC WITHSTANDING VOLTAGE: 300V AC RMS AT 60Hz, FOR 1 MINUTE.
 - CONTACT RESISTANCE: 55 MILLIOHMS MAX. PER PIN INITIAL.
 $\Delta R = 20$ MILLIOHMS MAX. PER PIN AFTER FULL ENVIRONMENTAL TESTING.
- MECHANICAL CHARACTERISTICS: DURABILITY: 50 MATING CYCLES.
- OPERATION TEMPERATURE: -40°C TO +100°C.
- RECOMMEND PROCESS CONDITION: SMT, PEAK TEMPERATURE: 260°C, 10~20s
- PLEASE CONTACT FOXCONN SALES REPRESENTATIVE TO VERIFY PRODUCT DETAIL & AVAILABILITY.



PART NO. DESCRIPTION: A S 0 B 2 2 * - S 4 0 * - 7 *

MEMORY MODULE SOCKET
 HORIZONTAL TYPE
 SINGLE ROW
 NO. OF POS.
 B2= 52 POS.
 SMT
 CONTACT AREA PLATING
 1=GOLD FLASH
 6=10u" GOLD PLATING

H=HALOGEN/LEAD FREE
 F=LEAD FREE
 7=TAPE&REEL
 Q=GENERAL TYPE
 K=ONLY CLIP
 40=4.0mm HEIGHT
 STANDARD TYPE



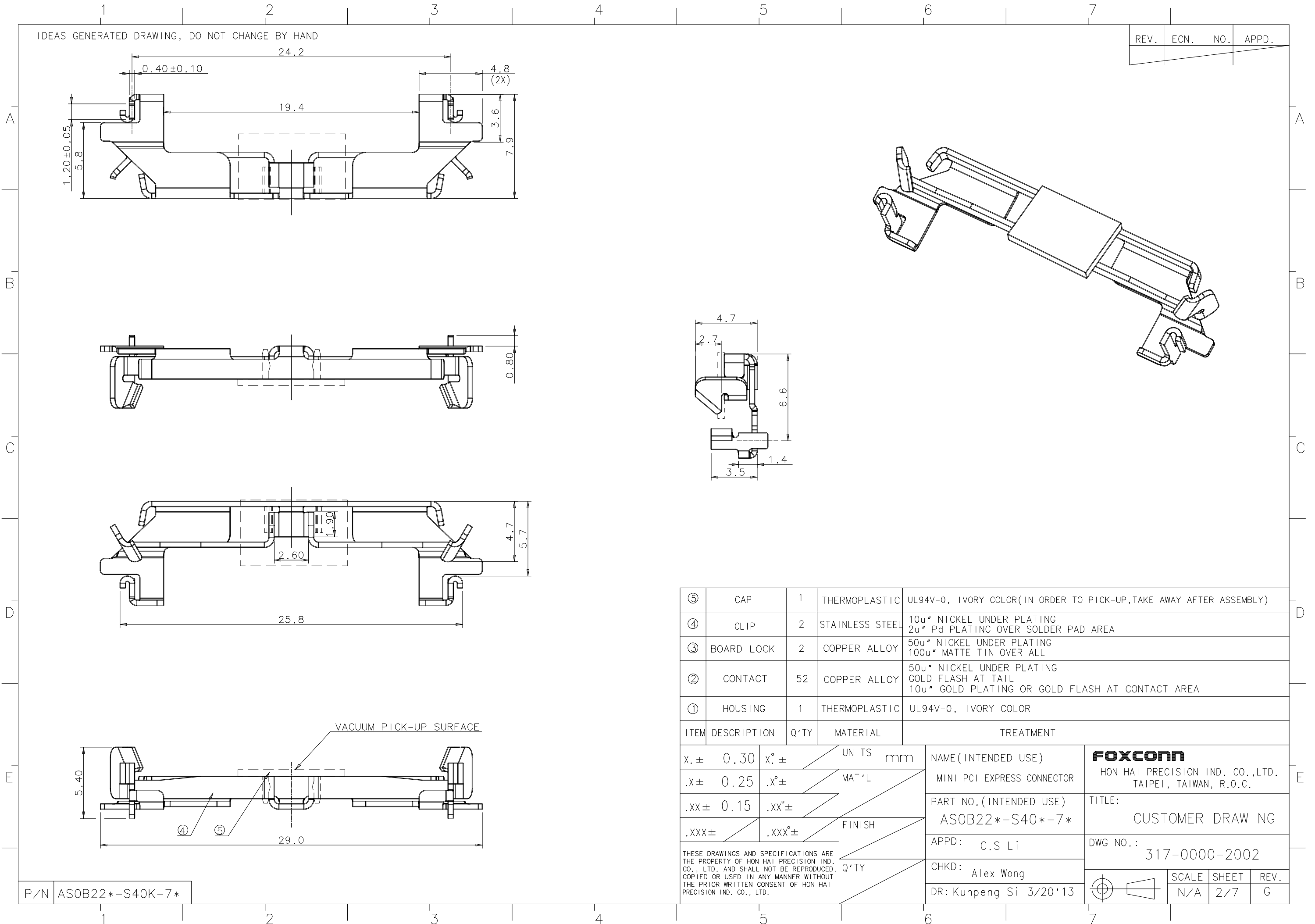
SECTION A-A

P/N AS0B22*-S40Q-7*

X. ± 0.30	X° ± 2°	UNITS	mm	NAME (INTENDED USE)	FOXCONN HON HAI PRECISION IND. CO., LTD. TAIPEI, TAIWAN, R.O.C.	
.X ± 0.25	.X° ± 1°	MAT'L		MINI PCI EXPRESS CONNECTOR		
.XX ± 0.15	.XX° ±			PART NO. (INTENDED USE)	TITLE:	
.XXX ±	.XXX° ±	FINISH		AS0B22*-S40*-7*	CUSTOMER DRAWING	
THESE DRAWINGS AND SPECIFICATIONS ARE THE PROPERTY OF HON HAI PRECISION IND. CO., LTD. AND SHALL NOT BE REPRODUCED, COPIED OR USED IN ANY MANNER WITHOUT THE PRIOR WRITTEN CONSENT OF HON HAI PRECISION IND. CO., LTD.				APPD:	C.S Li	DWG NO.:
				CHKD:	Alex Wong	317-0000-2002
				DR:	Kunpeng Si 3/20'13	
				SCALE	SHEET	REV.
				N/A	1/7	G

IDEAS GENERATED DRAWING, DO NOT CHANGE BY HAND

REV.	ECN.	NO.	APPD.
------	------	-----	-------



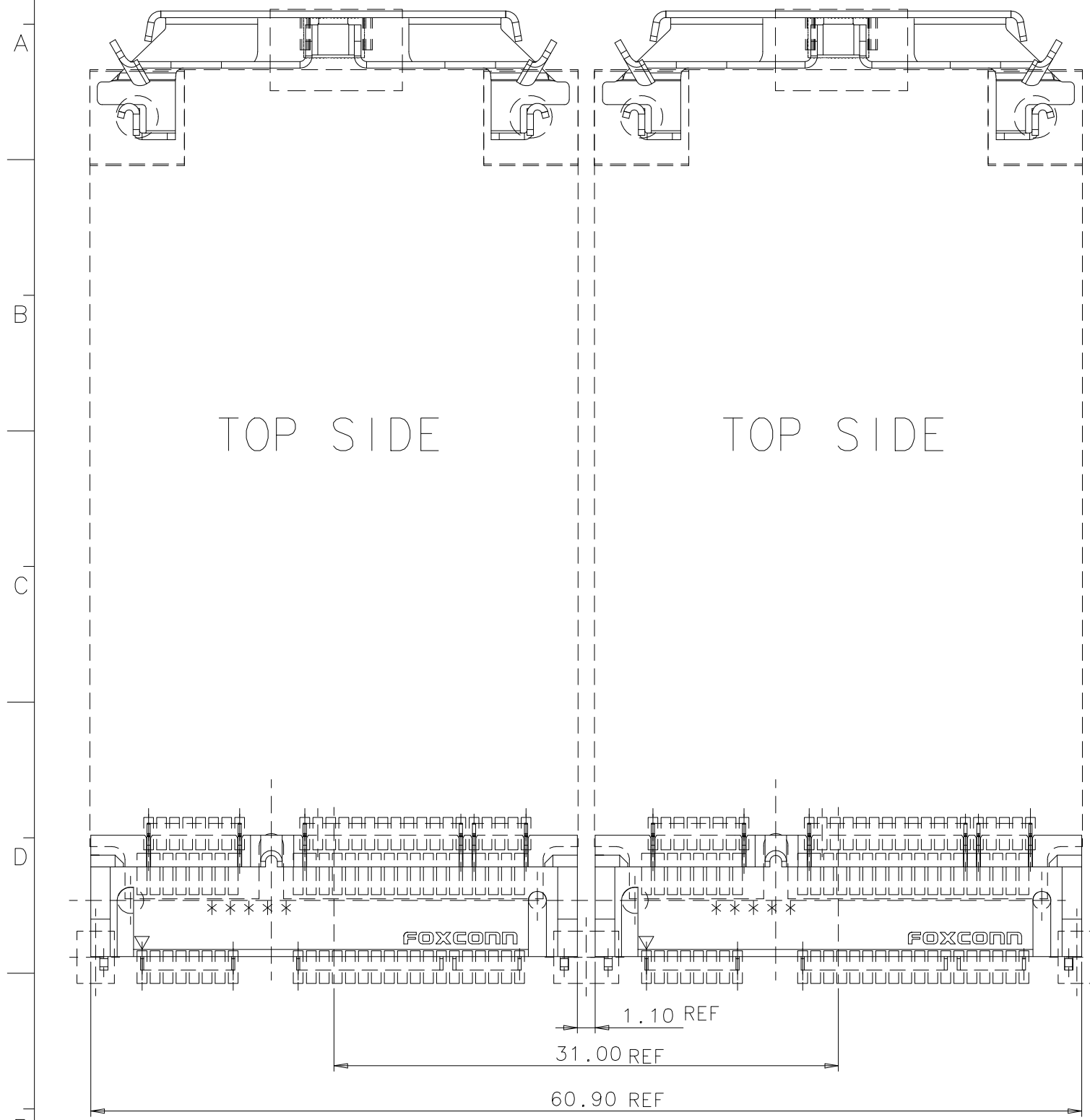
⑤	CAP	1	THERMOPLASTIC	UL94V-0, IVORY COLOR(IN ORDER TO PICK-UP, TAKE AWAY AFTER ASSEMBLY)
④	CLIP	2	STAINLESS STEEL	10u" NICKEL UNDER PLATING 2u" Pd PLATING OVER SOLDER PAD AREA
③	BOARD LOCK	2	COPPER ALLOY	50u" NICKEL UNDER PLATING 100u" MATTE TIN OVER ALL
②	CONTACT	52	COPPER ALLOY	50u" NICKEL UNDER PLATING GOLD FLASH AT TAIL 10u" GOLD PLATING OR GOLD FLASH AT CONTACT AREA
①	HOUSING	1	THERMOPLASTIC	UL94V-0, IVORY COLOR

ITEM	DESCRIPTION	Q'TY	MATERIAL	TREATMENT						
x. ±	0.30	x° ±	UNITS	mm						
.x ±	0.25	.x° ±	MAT'L							
.xx ±	0.15	.xx° ±	FINISH							
.xxx ±		.xxx° ±	Q'TY							
THESE DRAWINGS AND SPECIFICATIONS ARE THE PROPERTY OF HON HAI PRECISION IND. CO., LTD. AND SHALL NOT BE REPRODUCED, COPIED OR USED IN ANY MANNER WITHOUT THE PRIOR WRITTEN CONSENT OF HON HAI PRECISION IND. CO., LTD.				NAME (INTENDED USE) MINI PCI EXPRESS CONNECTOR PART NO. (INTENDED USE) ASOB22*-S40*-7* APPD: C.S Li CHKD: Alex Wong DR: Kungpeng Si 3/20'13						
				FOXCONN HON HAI PRECISION IND. CO., LTD. TAIPEI, TAIWAN, R.O.C. TITLE: CUSTOMER DRAWING DWG NO.: 317-0000-2002						
				<table border="1"> <tr> <td>SCALE</td> <td>SHEET</td> <td>REV.</td> </tr> <tr> <td>N/A</td> <td>2/7</td> <td>G</td> </tr> </table>	SCALE	SHEET	REV.	N/A	2/7	G
SCALE	SHEET	REV.								
N/A	2/7	G								

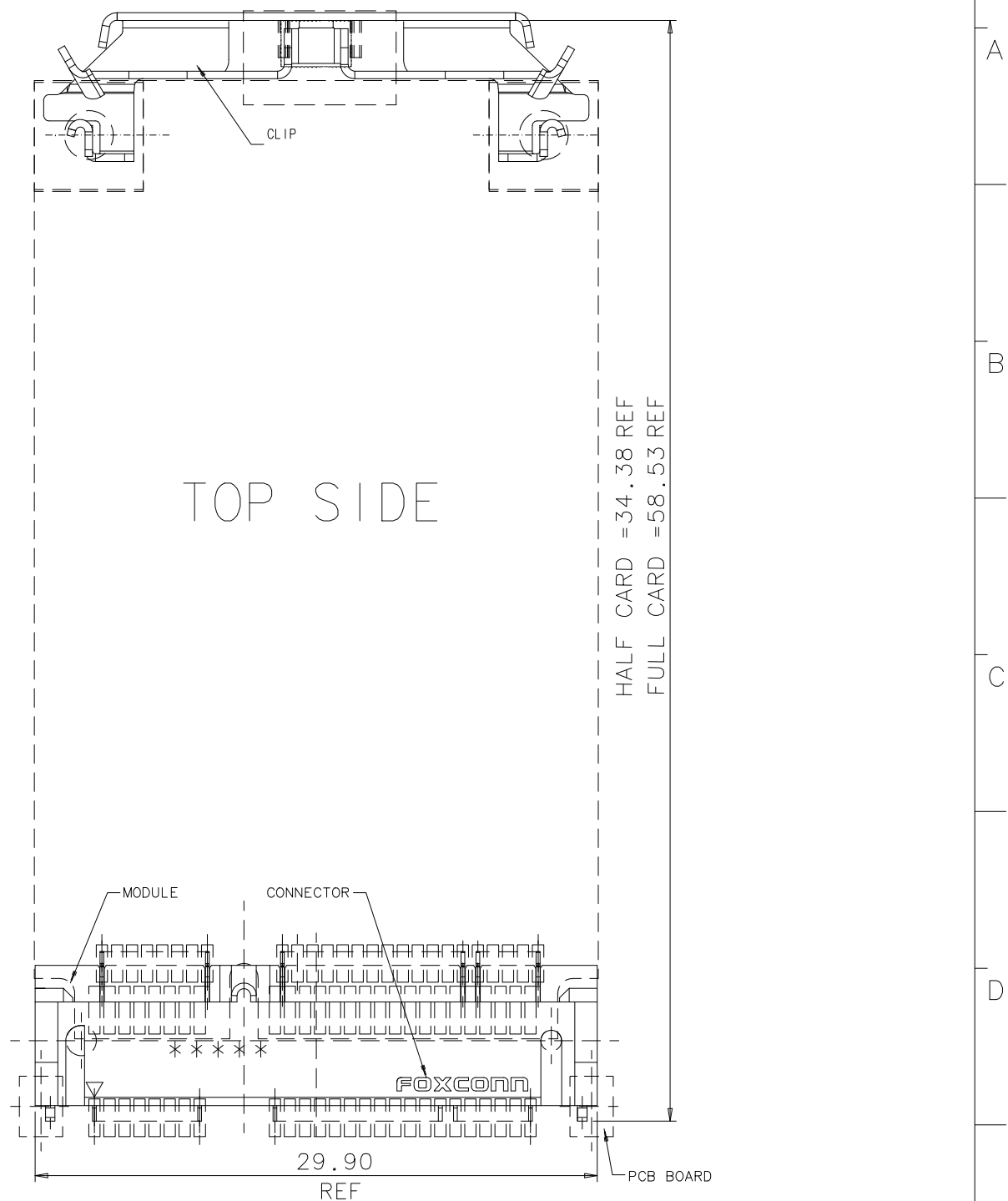
P/N ASOB22*-S40K-7*

IDEAS GENERATED DRAWING, DO NOT CHANGE BY HAND

REV.	ECN.	NO.	APPD.

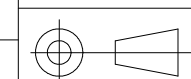


SIDE BY SIDE LAYOUT FOR ASSEMBLY(CONNECTOR+CLIP+MODULE CARD+P.C.B)



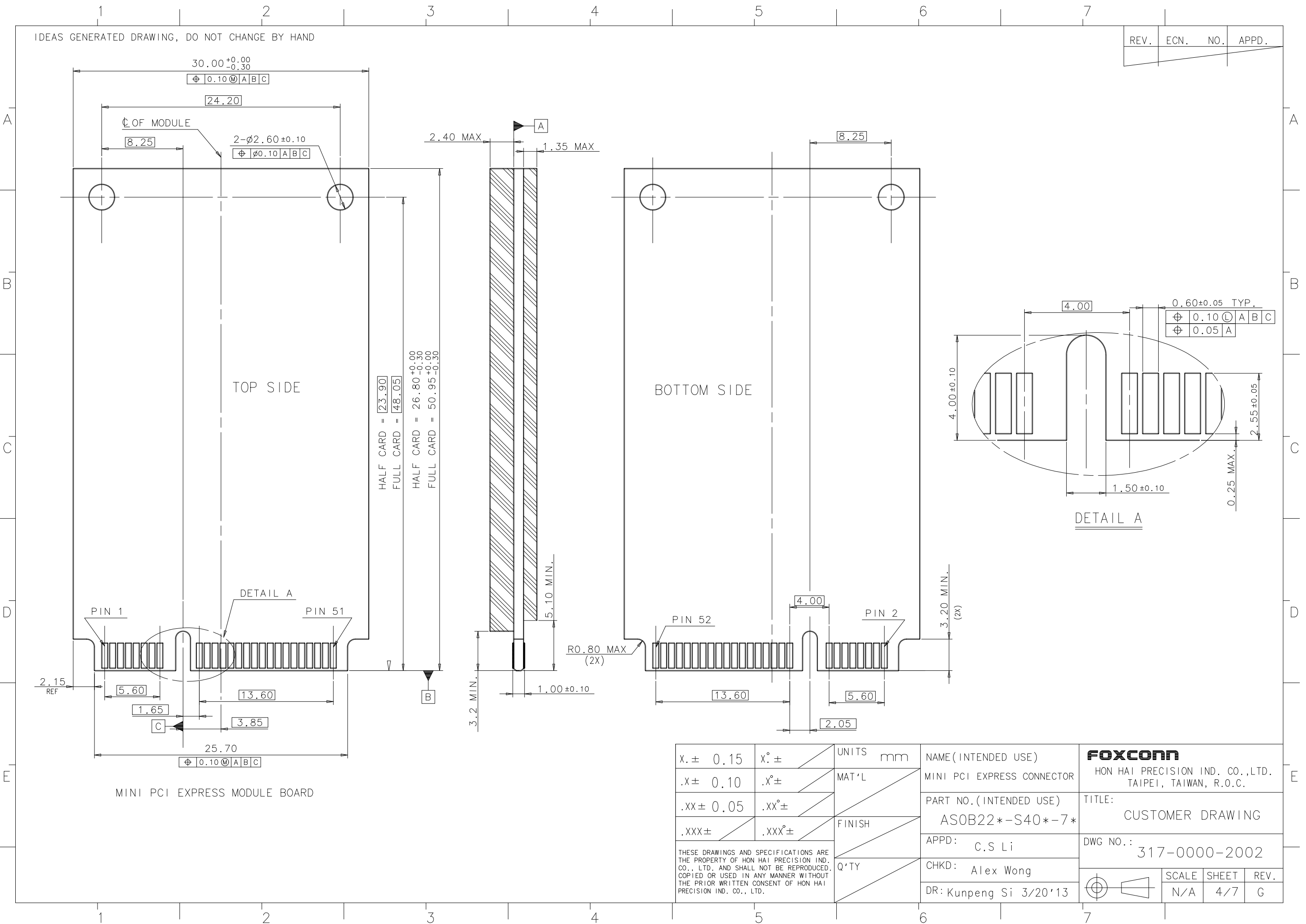
SINGLE LAYOUT FOR ASSEMBLY(CONNECTOR+CLIP+MODULE CARD+P.C.B)

x. ± 0.30	x° ±	UNITS	mm	NAME (INTENDED USE)	FOXCONN HON HAI PRECISION IND. CO., LTD. TAIPEI, TAIWAN, R.O.C.		
.x ± 0.25	.x° ±	MAT'L		MINI PCI EXPRESS CONNECTOR			
.xx ± 0.15	.xx° ±	FINISH		PART NO. (INTENDED USE)	TITLE:		
.xxx ±	.xxx° ±	Q'TY		ASOB22*-S40*-4*	CUSTOMER DRAWING		
<small>THESE DRAWINGS AND SPECIFICATIONS ARE THE PROPERTY OF HON HAI PRECISION IND. CO., LTD. AND SHALL NOT BE REPRODUCED, COPIED OR USED IN ANY MANNER WITHOUT THE PRIOR WRITTEN CONSENT OF HON HAI PRECISION IND. CO., LTD.</small>				APPD: C.S Li	DWG NO.:		
				CHKD: Alex Wong		317-0000-2002	
				DR: Kungpeng Si 3/20'13		SCALE	SHEET
			N/A	3/7	G		

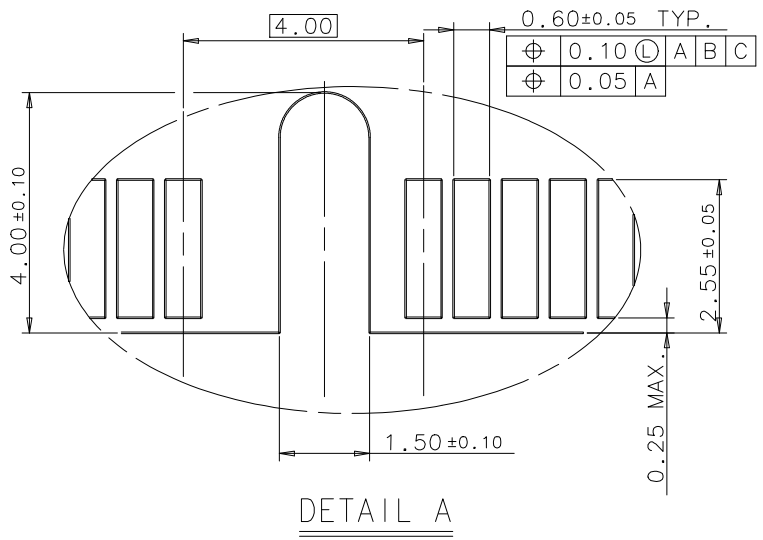


IDEAS GENERATED DRAWING, DO NOT CHANGE BY HAND

REV.	ECN.	NO.	APPD.



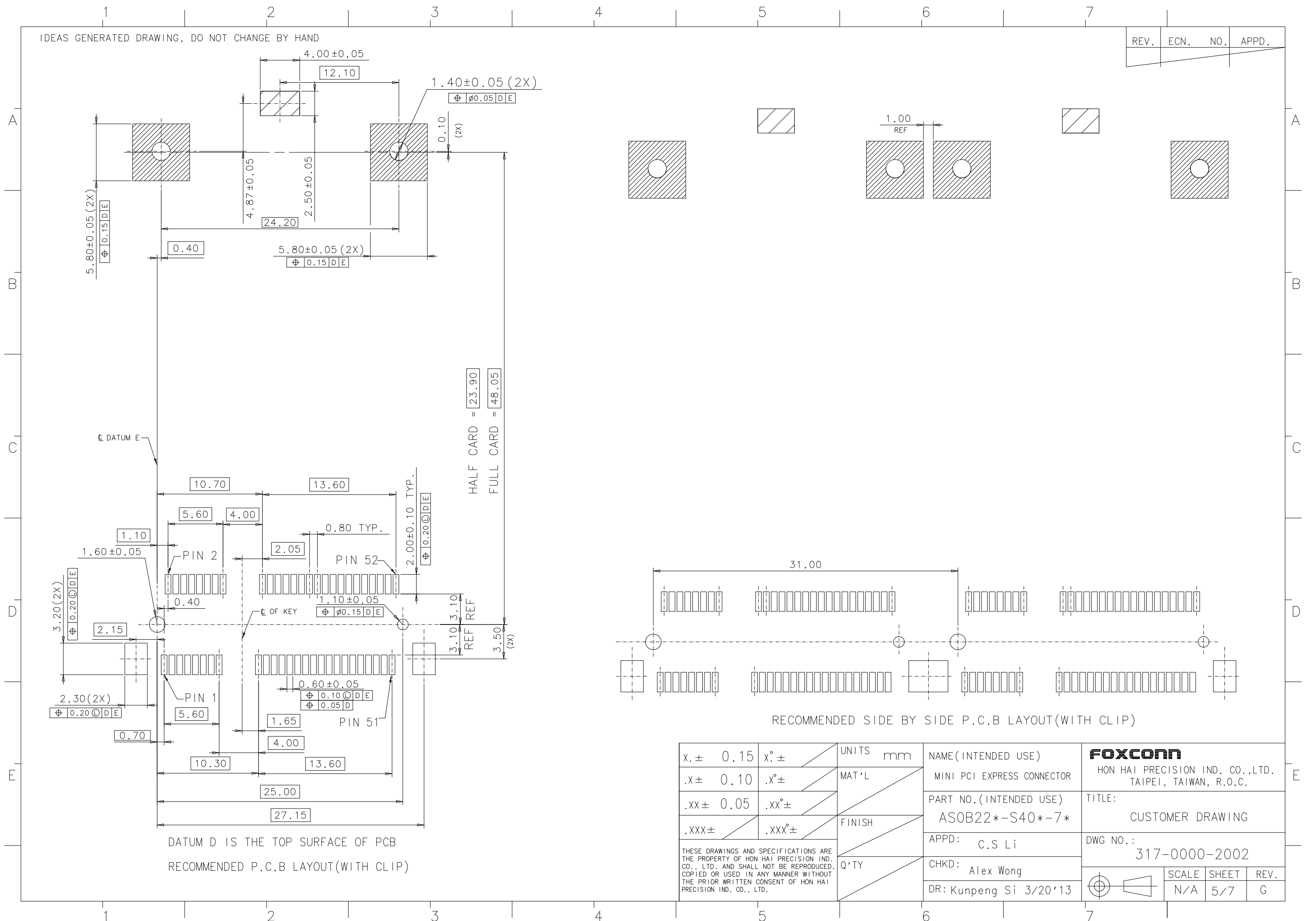
HALF CARD = 23.90
 FULL CARD = 48.05
 HALF CARD = 26.80^{+0.00}/_{-0.30}
 FULL CARD = 50.95^{+0.00}/_{-0.30}



X.± 0.15	X°±	UNITS	mm	NAME (INTENDED USE)	FOXCONN HON HAI PRECISION IND. CO., LTD. TAIPEI, TAIWAN, R.O.C.
.X± 0.10	.X°±	MAT'L		MINI PCI EXPRESS CONNECTOR	
.XX± 0.05	.XX°±			PART NO. (INTENDED USE)	TITLE:
.XXX±	.XXX°±	FINISH		AS0B22*-S40*-7*	CUSTOMER DRAWING
THESE DRAWINGS AND SPECIFICATIONS ARE THE PROPERTY OF HON HAI PRECISION IND. CO., LTD. AND SHALL NOT BE REPRODUCED, COPIED OR USED IN ANY MANNER WITHOUT THE PRIOR WRITTEN CONSENT OF HON HAI PRECISION IND. CO., LTD.				APPD:	C.S Li
				Q'TY	
				CHKD:	Alex Wong
				DR:	Kunpeng Si 3/20'13
					DWG NO.: 317-0000-2002
					SCALE SHEET REV.
					N/A 4/7 G

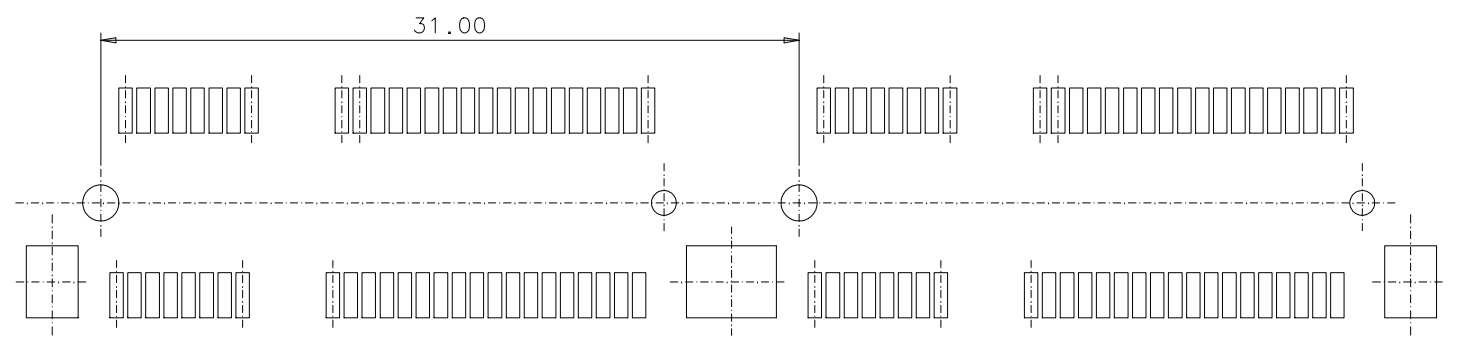
IDEAS GENERATED DRAWING, DO NOT CHANGE BY HAND

REV.	ECN.	NO.	APPD.



HALF CARD = 23.90
FULL CARD = 48.05

DATUM D IS THE TOP SURFACE OF PCB
RECOMMENDED P.C.B LAYOUT(WITH CLIP)

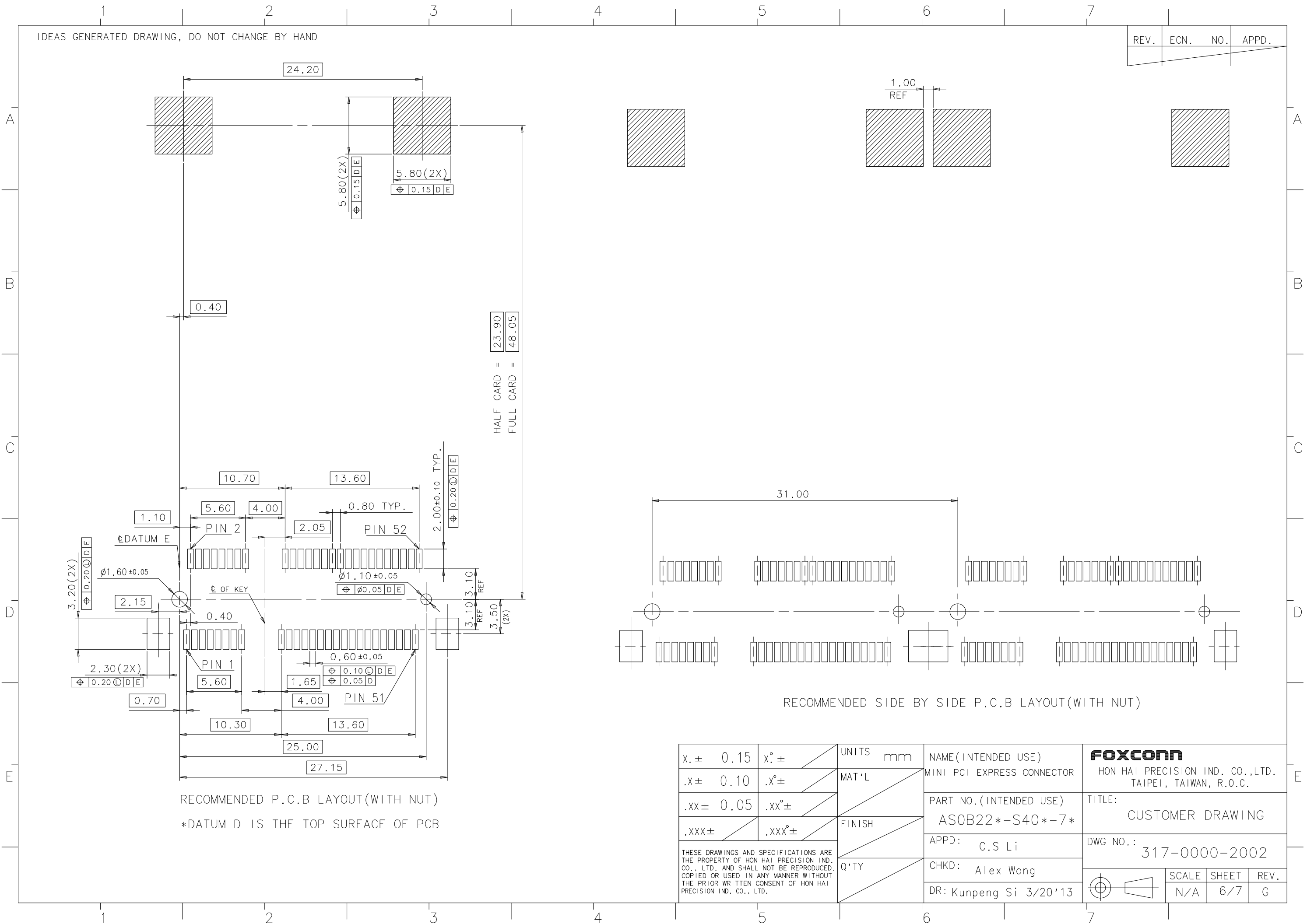


RECOMMENDED SIDE BY SIDE P.C.B LAYOUT(WITH CLIP)

x. ± 0.15	x° ±	UNITS mm	NAME (INTENDED USE)	FOXCONN HON HAI PRECISION IND. CO., LTD. TAIPEI, TAIWAN, R.O.C.
.x ± 0.10	.x° ±		MINI PCI EXPRESS CONNECTOR	
.xx ± 0.05	.xx° ±	MAT'L	PART NO. (INTENDED USE)	TITLE:
.xxx ±	.xxx° ±	FINISH	AS0B22*-S40*-7*	CUSTOMER DRAWING
THESE DRAWINGS AND SPECIFICATIONS ARE THE PROPERTY OF HON HAI PRECISION IND. CO., LTD. AND SHALL NOT BE REPRODUCED, COPIED OR USED IN ANY MANNER WITHOUT THE PRIOR WRITTEN CONSENT OF HON HAI PRECISION IND. CO., LTD.			APPD: C.S Li	DWG NO.:
			CHKD: Alex Wong	317-0000-2002
Q'TY			DR: Kungpeng Si 3/20'13	SCALE SHEET REV.
				N/A 5/7 G

IDEAS GENERATED DRAWING, DO NOT CHANGE BY HAND

REV.	ECN.	NO.	APPD.
------	------	-----	-------



HALF CARD = 23.90
 FULL CARD = 48.05

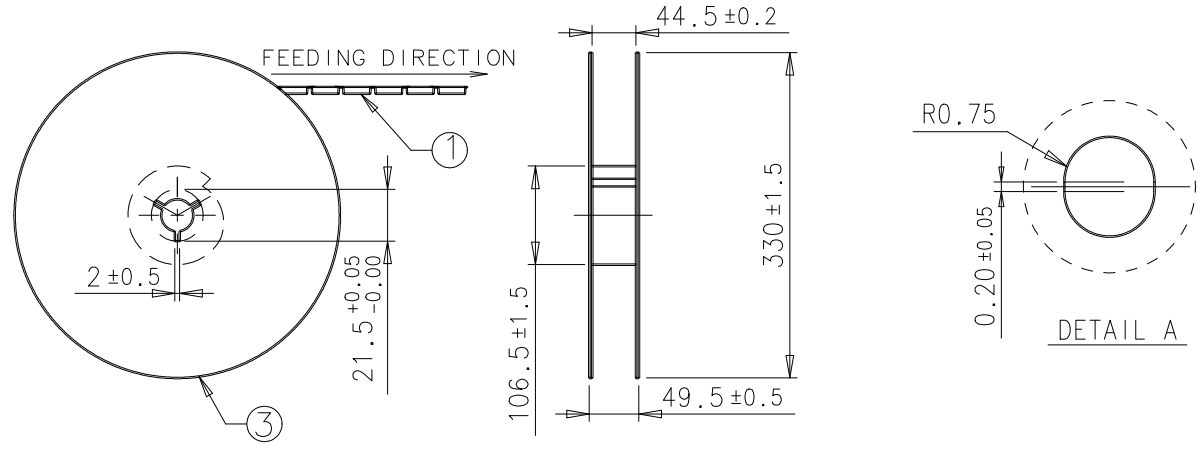
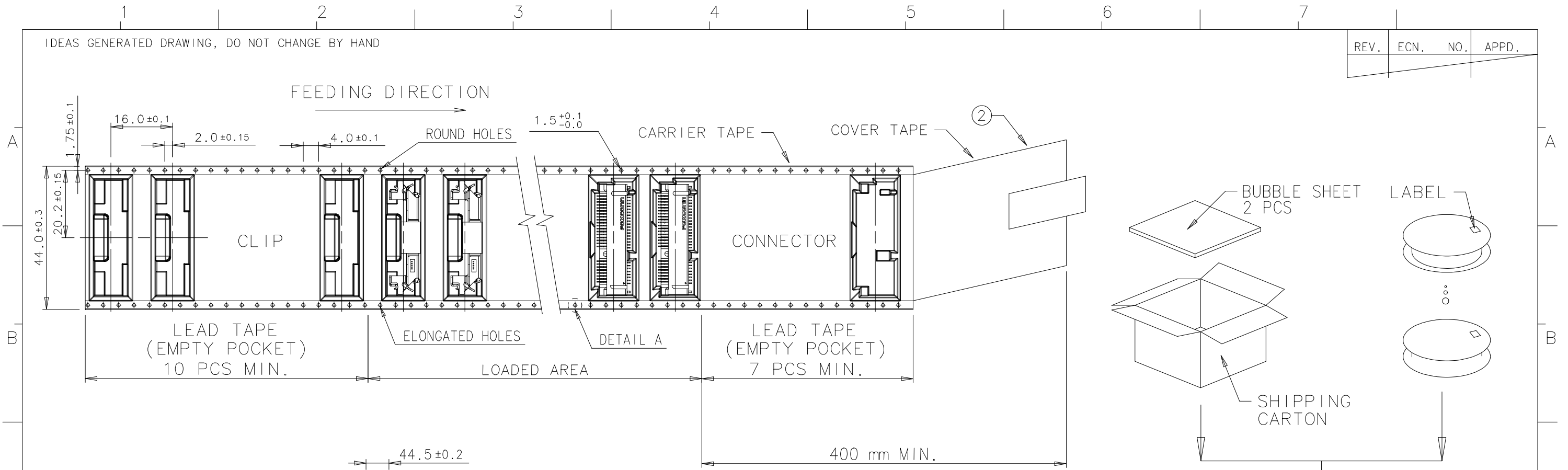
RECOMMENDED P.C.B LAYOUT (WITH NUT)
 *DATUM D IS THE TOP SURFACE OF PCB

RECOMMENDED SIDE BY SIDE P.C.B LAYOUT (WITH NUT)

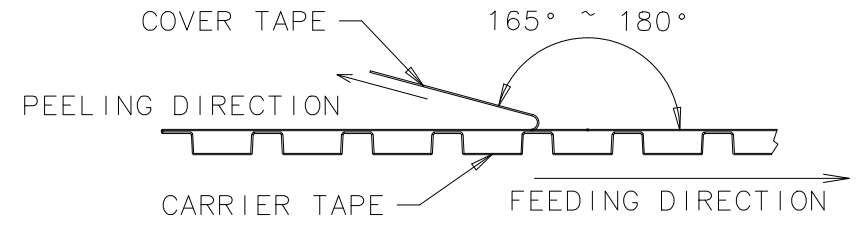
$x. \pm 0.15$	$x^\circ \pm$	UNITS	mm	NAME (INTENDED USE)	FOXCONN HON HAI PRECISION IND. CO., LTD. TAIPEI, TAIWAN, R.O.C.
$.x \pm 0.10$	$.x^\circ \pm$	MAT'L		MINI PCI EXPRESS CONNECTOR	
$.xx \pm 0.05$	$.xx^\circ \pm$	FINISH		PART NO. (INTENDED USE)	TITLE:
$.xxx \pm$	$.xxx^\circ \pm$	Q'TY		ASOB22*-S40*-7*	CUSTOMER DRAWING
THESE DRAWINGS AND SPECIFICATIONS ARE THE PROPERTY OF HON HAI PRECISION IND. CO., LTD. AND SHALL NOT BE REPRODUCED, COPIED OR USED IN ANY MANNER WITHOUT THE PRIOR WRITTEN CONSENT OF HON HAI PRECISION IND. CO., LTD.				APPD: C.S Li	DWG NO.: 317-0000-2002
				CHKD: Alex Wong	SCALE SHEET REV.
				DR: Kungpeng Si 3/20'13	N/A 6/7 G

IDEAS GENERATED DRAWING, DO NOT CHANGE BY HAND

REV.	ECN.	NO.	APPD.

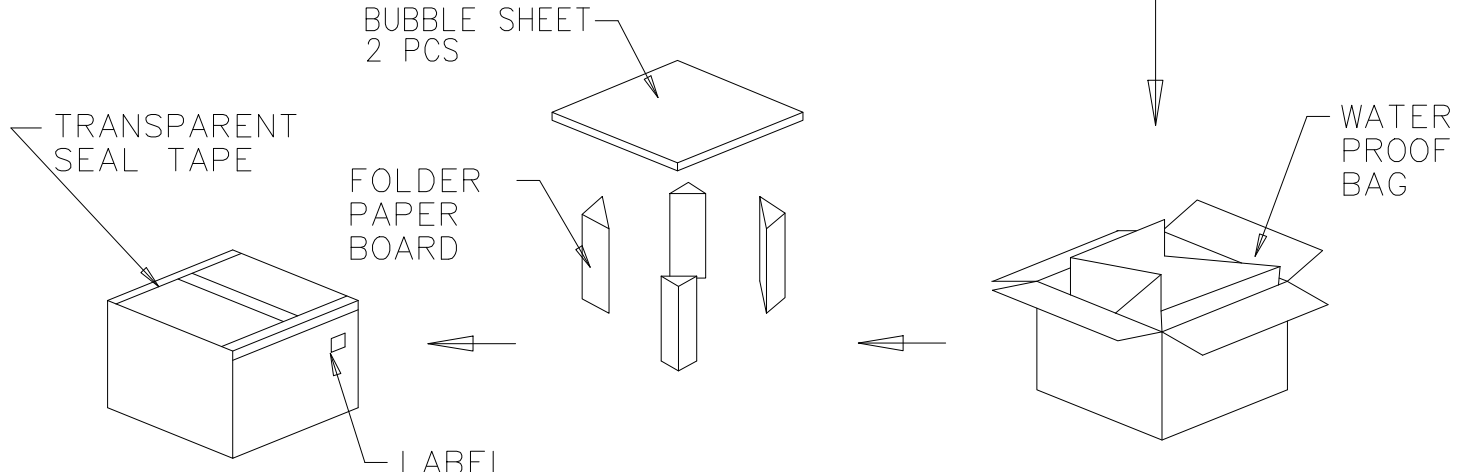


- NOTES:
- 10 POCKETS HOLE PITCH CUMULATIVE TOLERANCE ±0.20mm.
 - COVER TAPE PEELING STRENGTH : 0.01 kgf MIN & 0.13 kgf MAX. AT 300mm/min.



3. PACKING CAPACITY :

PART No.	PCS / REEL	REEL / BOX	PCS / BOX
ASOB22*-S40Q-7*	600	5	3000
ASOB22*-S40K-7*	500	5	2500



ITEM	DESCRIPTION	MATERIAL
③	REEL	POLYSTYRENE
②	COVER TAPE	POLYESTER
①	CARRIER TAPE	POLYSTYRENE

x. ± 0.15	x° ±	UNITS	mm	NAME (INTENDED USE)	FOXCONN HON HAI PRECISION IND. CO., LTD. TAIPEI, TAIWAN, R.O.C.
.x ± 0.10	.x° ±	MAT'L		MINI PCI EXPRESS CONNECTOR	
.xx ± 0.05	.xx° ±			PART NO. (INTENDED USE)	TITLE:
.xxx ±	.xxx° ±	FINISH		ASOB22*-S40*-7*	CUSTOMER DRAWING
THESE DRAWINGS AND SPECIFICATIONS ARE THE PROPERTY OF HON HAI PRECISION IND. CO., LTD. AND SHALL NOT BE REPRODUCED, COPIED OR USED IN ANY MANNER WITHOUT THE PRIOR WRITTEN CONSENT OF HON HAI PRECISION IND. CO., LTD.				APPD: C.S Li	DWG NO.:
				CHKD: Alex Wong	317-0000-2002
				DR: Kungpeng Si 3/20'13	SCALE
					SHEET
					REV.
					N/A
					7/7
					G