

## SOT-23 Plastic-Encapsulate MOSFETS

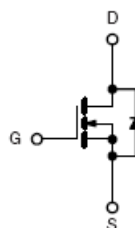
### FEATURE

TrenchFET Power MOSFET

### APPLICATIONS

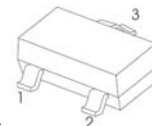
- Load Switch for Portable Devices
- DC/DC Converter

MARKING: A0D or A00



### SOT-23

1. GATE
2. SOURCE
3. DRAIN



### Maximum ratings ( $T_a=25^\circ\text{C}$ unless otherwise noted)

Characteristic 特性參數	Symbol 符號	Max 最大值	Unit 單位
Drain-Source Voltage 漏極-源極電壓	$BV_{DSS}$	20	V
Gate- Source Voltage 柵極-源極電壓	$V_{GS}$	$\pm 8$	V
Drain Current (continuous) 漏極電流-連續	$I_D$	4.2	A
Drain Current (pulsed) 漏極電流-脉冲	$I_{DM}$	16	A
Total Device Dissipation 總耗散功率 $T_A=25^\circ\text{C}$ 環境溫度為 $25^\circ\text{C}$	PD	1200	mW
Junction 結溫	$T_J$	150	$^\circ\text{C}$
Storage Temperature 儲存溫度	$T_{stg}$	-55to+150	$^\circ\text{C}$

## SOT-23 Plastic-Encapsulate MOSFETS

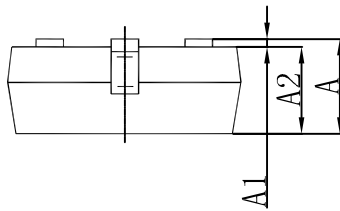
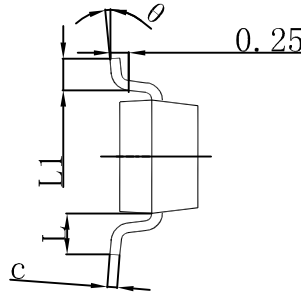
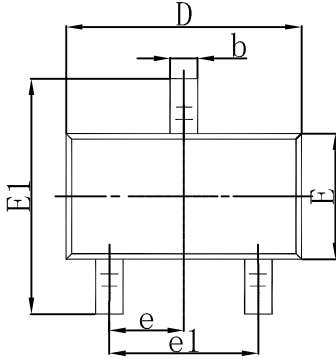
■ Maximum ratings ( $T_a=25^\circ\text{C}$  unless otherwise noted)

Characteristic 特性參數	Symbol 符號	Min 最小值	Typ 典型值	Max 最大值	Unit 單位
Drain-Source Breakdown Voltage 漏極-源極擊穿電壓( $I_D = 250\mu\text{A}, V_{GS}=0\text{V}$ )	$BV_{DSS}$	20	—	—	V
Gate Threshold Voltage 柵極開啓電壓( $I_D = 250\mu\text{A}, V_{GS} = V_{DS}$ )	$V_{GS(th)}$	0.45	—	1.2	V
Diode Forward Voltage Drop 內附二極管正向壓降( $I_S = 0.75\text{A}, V_{GS}=0\text{V}$ )	$V_{SD}$	—	—	1.3	V
Zero Gate Voltage Drain Current 零柵壓漏極電流( $V_{GS}=0\text{V}, V_{DS}=16\text{V}$ ) ( $V_{GS}=0\text{V}, V_{DS}=16\text{V}, T_A=55^\circ\text{C}$ )	$I_{DSS}$	—	—	1 10	$\mu\text{A}$
Gate Body Leakage 柵極漏電流( $V_{GS}=\pm 8\text{V}, V_{DS}=0\text{V}$ )	$I_{GSS}$	—	—	$\pm 100$	nA
Static Drain-Source On-State Resistance 靜態漏源導通電阻( $I_D=4.2\text{A}, V_{GS}=4.5\text{V}$ ) ( $I_D=2\text{A}, V_{GS}=2.5\text{V}$ ) ( $I_D=1\text{A}, V_{GS}=1.8\text{V}$ )	$R_{DS(ON)}$	—	25 30 50	30 40 60	$\text{m}\Omega$
Input Capacitance 輸入電容 ( $V_{GS}=0\text{V}, V_{DS}=10\text{V}, f=1\text{MHz}$ )	$C_{ISS}$	—	—	650	pF
Common Source Output Capacitance 共源輸出電容( $V_{GS}=0\text{V}, V_{DS}=10\text{V}, f=1\text{MHz}$ )	$C_{OSS}$	—	—	150	pF
Turn-ON Time 開啓時間 ( $V_{DS}=10\text{V}, I_D=3.5\text{A}, R_{GEN}=10\Omega$ )	$t_{(on)}$	—	—	20	ns
Turn-OFF Time 關斷時間 ( $V_{DS}=10\text{V}, I_D=3.5\text{A}, R_{GEN}=10\Omega$ )	$t_{(off)}$	—	—	60	ns

Pulse Width  $\leq 300 \mu\text{s}$ ; Duty Cycle  $\leq 2.0\%$

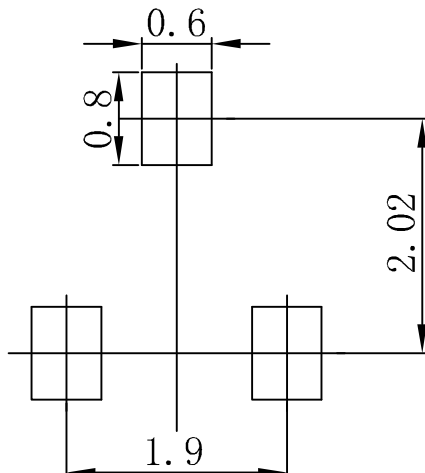
## SOT-23 Plastic-Encapsulate MOSFETS

### SOT-23 Package Outline Dimensions



Symbol	Dimensions In Millimeters		Dimensions In Inches	
	Min	Max	Min	Max
A	0.900	1.150	0.035	0.045
A1	0.000	0.100	0.000	0.004
A2	0.900	1.050	0.035	0.041
b	0.300	0.500	0.012	0.020
c	0.080	0.150	0.003	0.006
D	2.800	3.000	0.110	0.118
E	1.200	1.400	0.047	0.055
E1	2.250	2.550	0.089	0.100
e	0.950 TYP		0.037 TYP	
e1	1.800	2.000	0.071	0.079
L	0.550 REF		0.022 REF	
L1	0.300	0.500	0.012	0.020
θ	0°	8°	0°	6°

### SOT-23 Suggested Pad Layout



**Note:**

1. Controlling dimension: in millimeters.
2. General tolerance:  $\pm 0.05\text{mm}$ .
3. The pad layout is for reference purposes only.