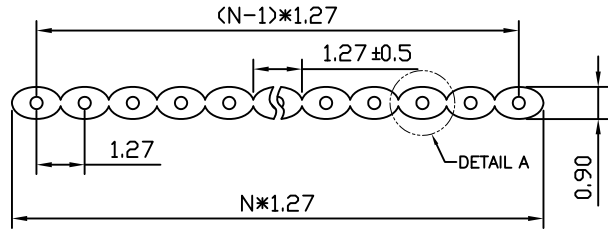
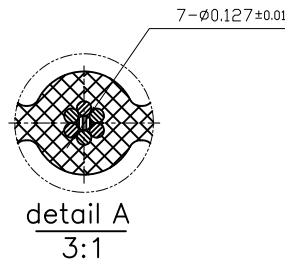
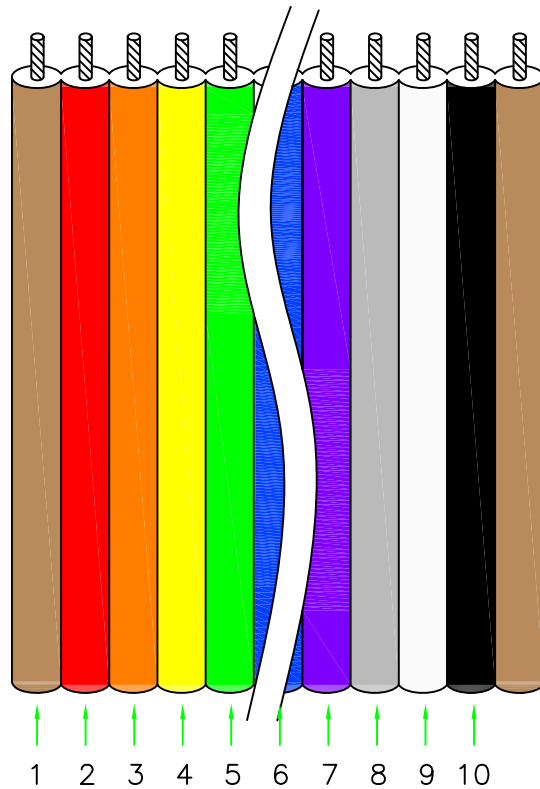


REV.	DESCRIPTION	DRAWN	CHECKED	APPROVED
A	NEW RELEASE	HP 15/06/05		



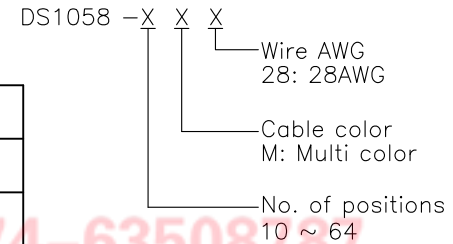
N=Positions



NOTES:

- Color
.Insulation: MULTI COLOUR
- SPECIFICATION
. Rating: 300V 1A
. Conductor Size: 28AWG
. Insulation resistance: 100MΩ/km min.
. Dielectric withstanding voltage: 1000 VAC 1 minute.
. Temperature range: -20°C to +80°C.
- APPLICATION
. Internal wiring of computers, electronic exchanges, measurement control devices, business machines, communication devices, and other electronic equipment.

4. Product Number Code



Pin	Cable color	Pin	Cable color
1	Brown	6	Blue
2	Red	7	Purple
3	Orange	8	Gray
4	Yellow	9	White
5	Green	10	Black

GENERAL TOLERANCE		ANGLE TOLERANCE		PROJECTION	TITLE
X.	±0.60	X.	±5°		FLAT CABLE MUTLI COLOR
.X	±0.38	.X	±3°	mm	
.XX	±0.25	.XX	±2°		
DRAWING TYPE		CUSTOMER		SHEET SIZE	SERIES
SCALE		1:1	SHEET	A4	DS1058
DRAWING NO.		C-DS1058-XXX		1 OF 1	

晨翔电子有限公司
CONNFLY CONNFLY ELECTRONIC CO. LTD

Tel: 86-574-63508787
Fax: 86-574-63510817
E-mail: sale@zhenqin.com.cn
Http://www.connfly.com
Add: East China Industrial Zone, KuangYan
P.O: 315333