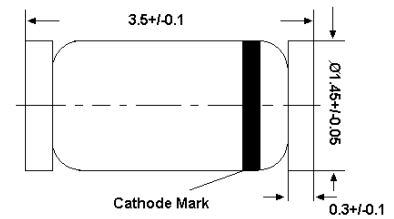


LL60P-D4004

Silicon Schottky Barrier Diode

Characteristics equivalent to or better than 1N60P
ideal for used in detection or for switching on the
radio, TV, etc.

LL-34



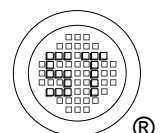
Glass case MiniMELF
Dimensions in mm

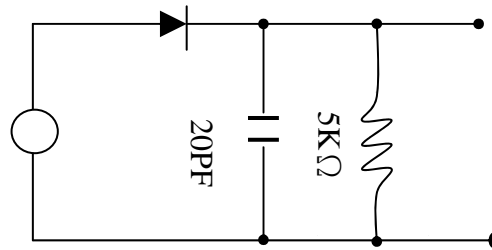
Absolute Maximum Ratings ($T_a = 25^\circ\text{C}$)

Parameter	Symbol	Value	Unit
Peak Reverse Voltage	V_{RM}	45	V
Reverse Voltage	V_R	20	V
Average Rectified Output Current	I_O	50	mA
Peak Forward Current	I_{FM}	150	mA
Surge Forward Current	I_{surge}	500	mA
Junction Temperature	T_j	125	$^\circ\text{C}$
Storage Temperature Range	T_{stg}	- 55 to + 150	$^\circ\text{C}$

Characteristics at $T_a = 25^\circ\text{C}$

Parameter	Symbol	Min.	Max.	Unit
Forward Voltage at $I_F = 4$ mA	V_F	0.3	1	V
Forward Current at $V_F = 1$ V	I_F	4	-	mA
Reverse Current at $V_R = 10$ V	I_R	-	50	μA
Rectification efficiency at $V_i = 2$ Vrms, $R = 5$ K Ω	η	55	-	%

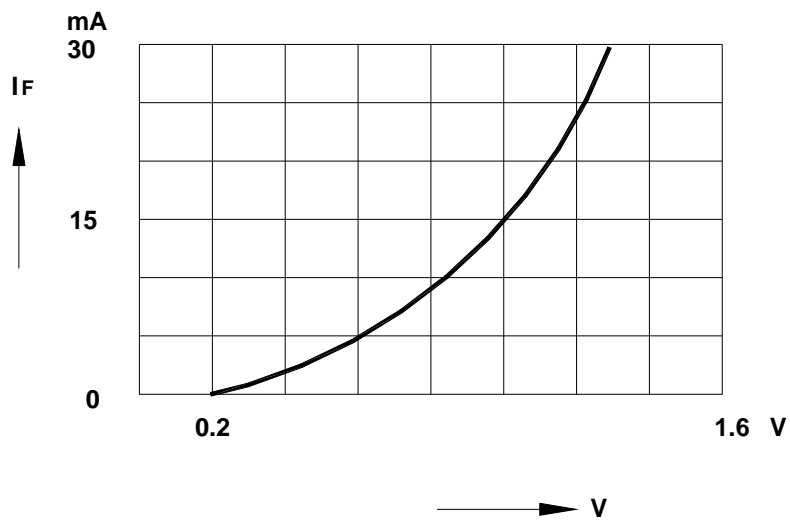




Input 2Vrms

Rectification Efficiency Measurement Circuit

Forward Characteristics



Reverse Characteristics

