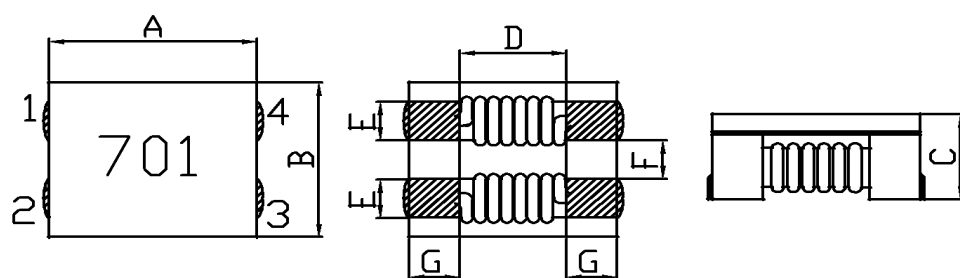
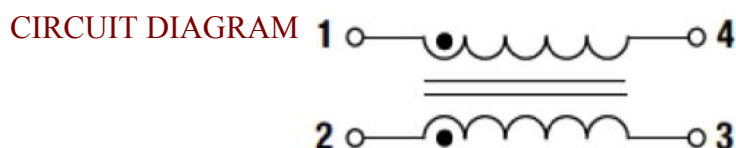


DIMENSION (UNIT : mm)


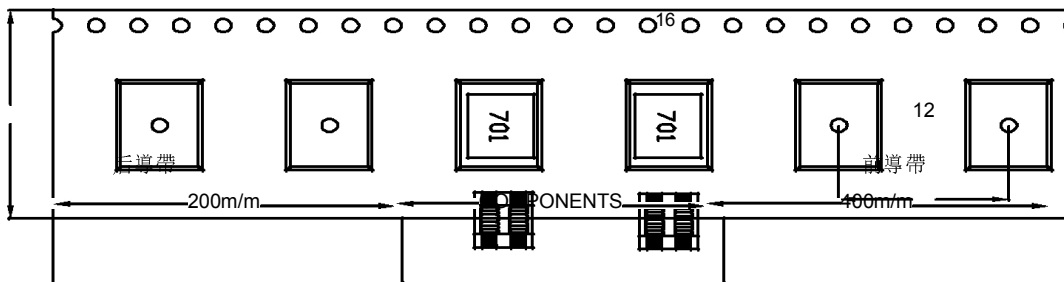
| | |
|---|----------|
| A | 7.0±0.5 |
| B | 6.0±0.5 |
| C | 3.8Max |
| D | 3.5Typ |
| E | 1.5±0.2 |
| F | 1.5±0.2 |
| G | 1.75±0.2 |
| | |
| | |


ELECTRICAL CHARACTERISTIC

| P/N | Z(Ω) @100MHz | | RDC (Ω) Max | Rated Current (A) Max | IR (MΩ) Min | Rated Voltage (V) Max | MARK |
|----------------|-----------------|------|-------------------|-----------------------------|-------------------|-----------------------------|------|
| | Min | Typ | | | | | |
| SMW7060S101NTT | 100 | 140 | 10 | 9.0 | 10 | 125 | 101 |
| SMW7060S301NTT | 225 | 300 | 10 | 5.0 | 10 | 125 | 301 |
| SMW7060S501NTT | 275 | 350 | 10 | 5.0 | 10 | 125 | 501 |
| SMW7060S601NTT | 500 | 700 | 15 | 4.0 | 10 | 125 | 601 |
| SMW7060S701NTT | 500 | 700 | 15 | 4.0 | 10 | 125 | 701 |
| SMW7060S102NTT | 800 | 1020 | 17 | 3.0 | 10 | 80 | 102 |

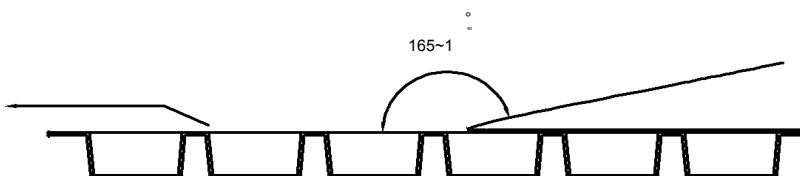
MATERIAL LIST

| NO. | ITEM | DESCRIPTION | SUPPLIER |
|-----|--------|-------------|-------------------|
| 1 | CORE | FERRITE | SINCORES OR EQ |
| 2 | WIRE | 2UEW P180 | ELEKTRISOLA OR EQ |
| 3 | 膠帶 | DM 膠帶 | HENGRENXIN OR EQ |
| 4 | SOLDER | Sn Cu | SHENMAO OR EQ |
| 5 | EPOXY | ME-5890 | PENGNO OR EQ |
| 6 | INK | 黑色 | BON MARK |
| | | | |

五. 編帶规格/TAPING SPECIFICATIONS

Transparent carrier and cover tape

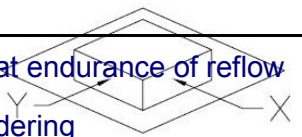
Adhesive strength of cover tape is 20 to 120 gf

The conduction band direction



RELIABILITY TESTING

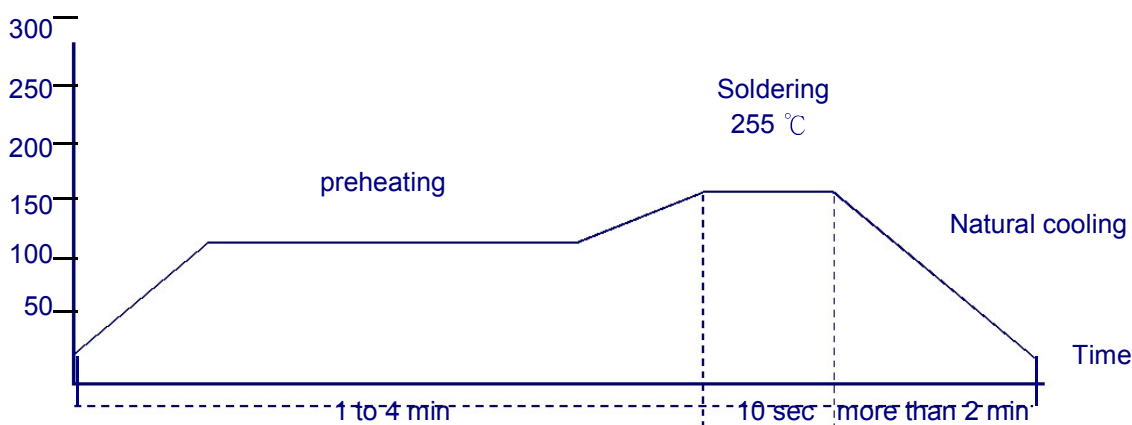
| | |
|------------------------------------|--|
| Operating Temperature | - 30 to + 100 °C (Contain Heating coil) |
| Appearance Inspection | No external defects by visual inspection |
| Terminal Strength | After soldering , between copper plaet and terminals of coils , push in two directions of X , Y with standing 10N(1.02kg) for10+/-2 sec. Terminal should not peel off. (Refer to figure at right) |
| Heat endurance of reflow soldering | Refer to figure |
| Insulating resistance | Over 100 MΩ at 100V D.C . between wire and core . |
| Dielectric Strength | Apply at 0.5KV 3mA for 1 minute between wire and core . |
| Temperature characteristics | Inductance coefficient (0~2,000) × 10 / °C (- 30 ~ + 100 °C) |
| Humidity characteristics | Inductance deviation within ± 10% , after 96 hours in 90~95% relative humidity at 40 ± 2 °C and 1 hours drying under normal condition . |



A test is made under the above mentioned condition , and it is kept for 2 hours in the normal

IR Reflow profile

Temperature °C



Temperature and humidity . After that , no mechanical and electrical defect should be found .