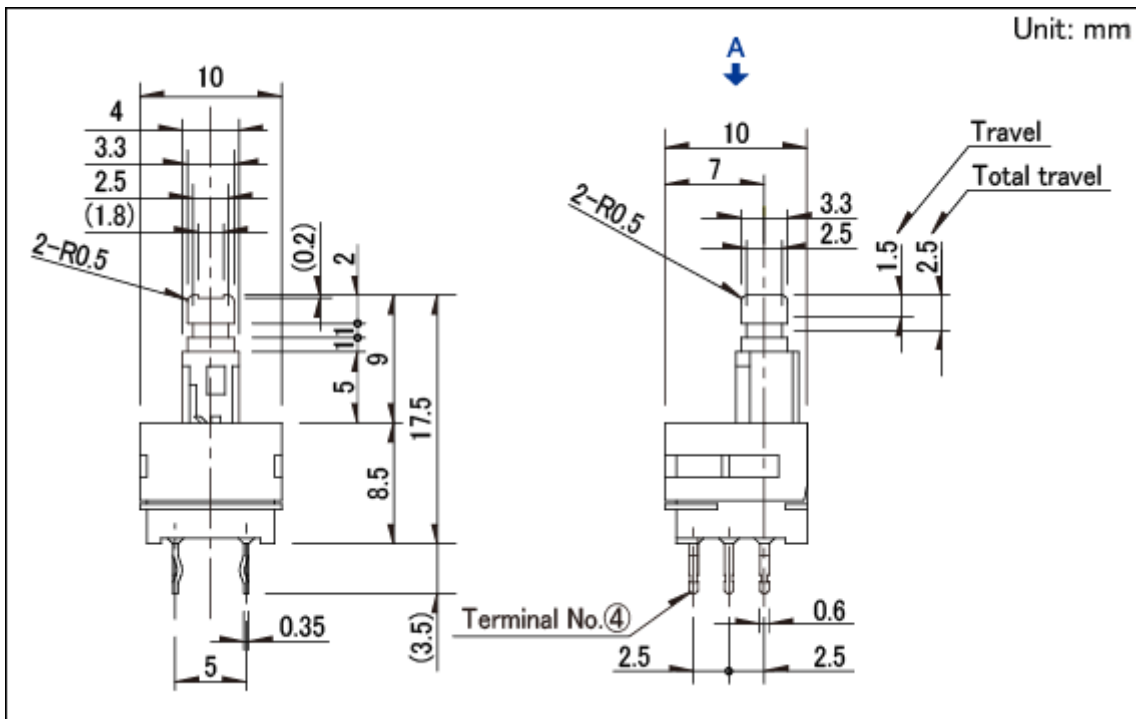




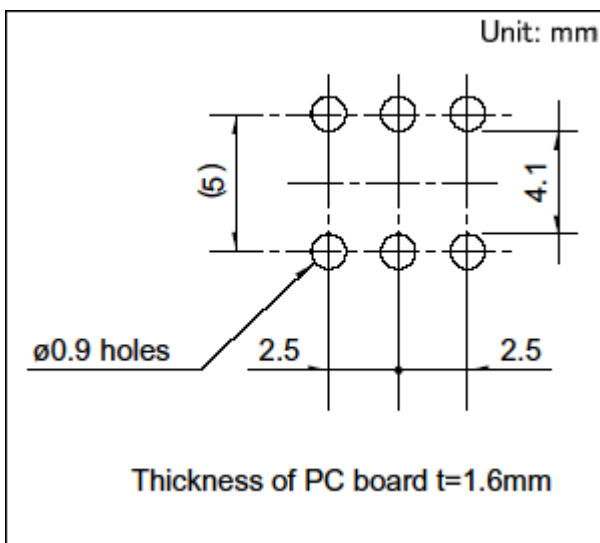
## 1.5mm-travel Vertical Type SPPH1 Series

|                                       |   |                            |
|---------------------------------------|---|----------------------------|
| Changeover timing                     | Non shorting  |                            |
| Travel                                | 1.5mm   |                            |
| Total travel                          | 2.5mm   |                            |
| Operating force                       | 2(+1, -0.7)N  |                            |
| Mounting method                       | PC board  |                            |
| Poles                                 | 2   |                            |
| Knob style                            | Standard  |                            |
| Operation                             | Momentary   |                            |
| Terminal type                         | Snap-in   |                            |
| Operating temperature range           | -10°C to +60°C  |                            |
| Rating (max.)/(min.) (Resistive load) | 0.1A 30V DC/50μA 3V DC                                  |                            |
| Electrical performance                | Contact resistance (Initial performance/After lifetime) | 20mΩ max./40mΩ max.        |
|                                       | Insulation resistance                                   | 100MΩ min. 500V DC         |
|                                       | Voltage proof   | 500V AC for 1 minute       |
| Mechanical performance                | Terminal strength                                       | 5N for 1 minute            |
|                                       | Actuator strength    Operating direction                | 50N                        |
| Durability                            | Operating life without load                             | 10,000 cycles<br>40mΩ max. |
|                                       | Operating life with load (at max. rated load)           | 10,000 cycles<br>40mΩ max. |
| Environmental performance             | Cold  | -20°C 96h                  |
|                                       | Dry heat  | 85°C 96h                   |
|                                       | Damp heat   | 40°C, 90 to 95%RH 96h      |
| Minimum order unit (pcs.)             | Japan   | 800                        |

## Dimensions

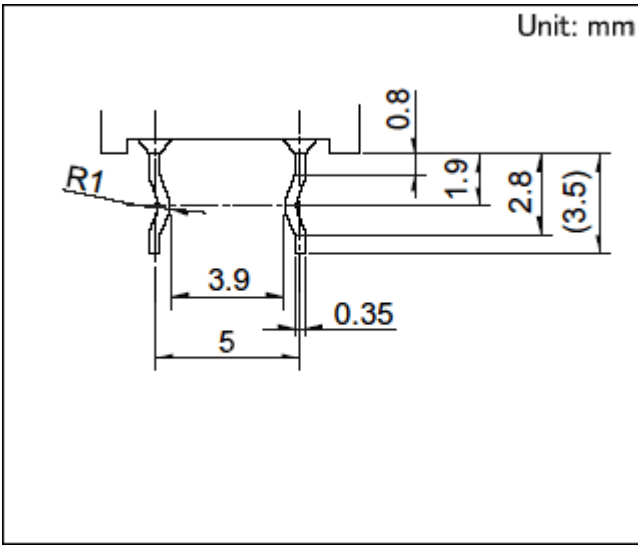


## Mounting Hole Dimensions

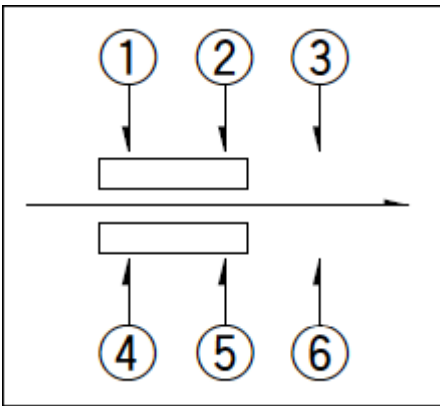


Viewed from direction A in the dimensions.

## Terminal Configuration



Circuit Diagram



Packing Specifications

**Bulk**

|  |             |
|--|-------------|
| Number of packages 1 case / Japan (pcs.) | 800         |
| 1 case / export packing                  | 4,000       |
| Export package measurements (mm)         | 400×270×290 |

Soldering Conditions

**Reference for Dip Soldering**

|               |                        |         |
|---------------|------------------------|---------|
| Items         | Preheating temperature | -       |
|               | Preheating time        | -       |
| Dip soldering | Soldering temperature  | 260±5°C |
|               | Duration of immersion  | 10±1s   |

**Reference for Hand Soldering**

|                       |         |
|-----------------------|---------|
| Soldering temperature | 350±5°C |
|-----------------------|---------|

---

Soldering time

3+1/0s

---

## Notes are common to this series/models.

1. This site catalog shows only outline specifications. When using the products, please obtain formal specifications for supply.
2. Please place purchase orders per minimum order unit (integer).
3. Products other than those listed in the above chart are also available. Please contact us for details.
4. This products can be used in vehicles.

Although these products are designed to perform over a wide operating temperature range, please ensure that you receive and read the formal delivery specifications before use.