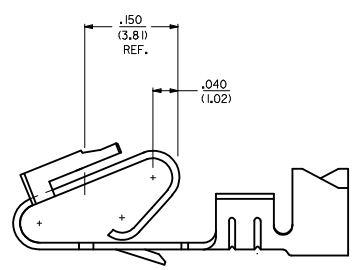
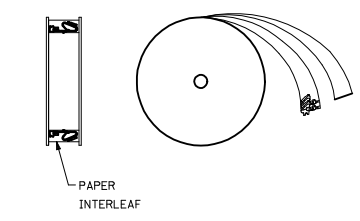


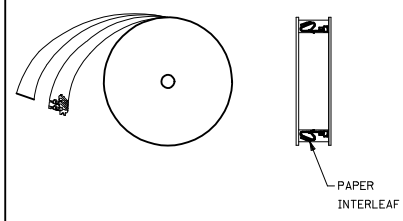
ALTERNATE GEOMETRY
SEE NOTE 10



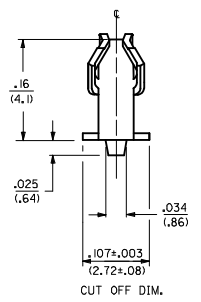
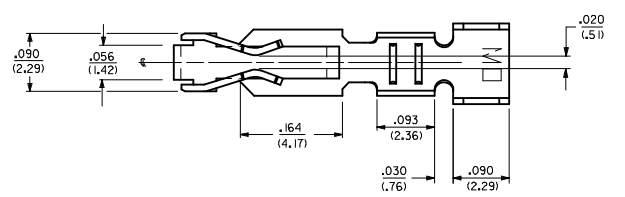
SELECTIVE PLATING
LOCATION



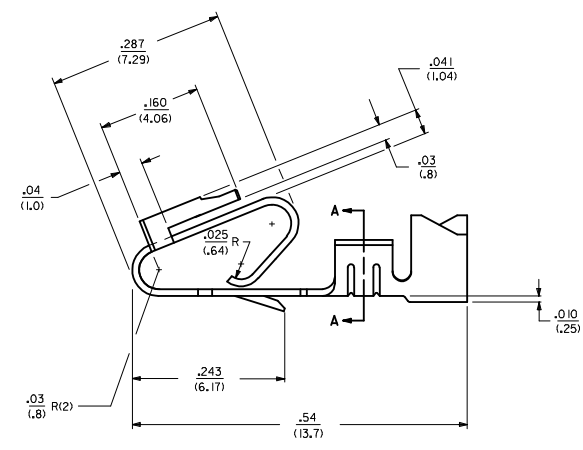
WINDING DETAIL "A"



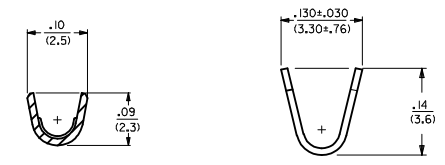
WINDING DETAIL "B"



CUT OFF DIM.



- NOTES:
- MATERIAL: SEE LEGEND
 - FINISH:
 - 909 - OVERALL HOT TIN DIP: .000100/(0.00254) MIN.
 - 154 - OVERALL TIN: .000100/(0.00254) MIN. OVER .000050/(0.00127) MIN. NICKEL.
 - 555 - SELECT HARD GOLD: .000015/(0.00038) MIN. OVERALL NICKEL: .000030/(0.00076) MIN.
 - 558 - SELECT HARD GOLD: .000030/(0.00076) MIN. OVERALL NICKEL: .000050/(0.00127) MIN. OVERALL HARD GOLD FLASH: .000002/(0.00005) MIN.
 - 561 - SELECT HARD GOLD: .000030/(0.00076) MIN. OVERALL NICKEL: .000050/(0.00127) MIN.
 - PRODUCT SPECIFICATION: PS-40-02
 - PACKAGING SPECIFICATION: CHAIN FORM: SEE PK-6838-001
LOOSE FORM: SEE PK-2759-001
 - TERMINAL FOR USE IN HOUSING SERIES 6442 AND 41695.
 - SEE 7258 SERIES FOR THIS PART WITH CRIMP FOR 22-26 AWG. WIRE.
 - CRIMP FOR 18 TO 20 GA. WIRE WITH MAX. INSULATION DIA. OF .100/(2.79).
STRIP LENGTH OF .125/.100 / (3.18/2.54)
 - DIMENSIONS GIVEN ACROSS CENTERLINES ARE SYMMETRICAL ABOUT THOSE CENTERLINES WITHIN HALF THE TOTAL TOLERANCE.
 - THIS PART CONFORMS TO CLASS B REQUIREMENTS OF COSMETIC SPECIFICATION PS-45499-002.
 - ALTERNATE GEOMETRY PRESENT ON SOME PART NUMBERS. SEE SHEET 2.
 - TEXT ON PART IS FOR REFERENCE ONLY. TEXT AND TEXT LOCATION MAY VARY DEPENDING ON PART NUMBER AND/OR TOOL.



SECTION A-A

- LEGEND: 6838- ()
- WINDING
 - A= PER DETAIL A
 - BLANK= PER DETAIL B
 - FORM
 - BLANK= CHAIN
 - L= LOOSE
 - PLATING
 - SEE NOTE 2
- MATERIAL:
 (.27)/.0106 THK
 BLANK=BRASS
 A=PHOS BRONZE

<p>NOTE 11 ADDED DEC NO: UCP2018-0013 DRAWN BY: AS CHYK: 2017/07/28 APPR: SHWARG REV: DESCRIPTION</p>	<p>QUALITY SYMBOLS</p> <p>▽=0 ▽=0 ▽=0</p>		<p>GENERAL TOLERANCES (UNLESS SPECIFIED)</p> <table border="1"> <tr> <th></th> <th>mm</th> <th>INCH</th> </tr> <tr> <td>4 PLACES</td> <td>± .10</td> <td>± .010</td> </tr> <tr> <td>3 PLACES</td> <td>± .15</td> <td>± .015</td> </tr> <tr> <td>2 PLACES</td> <td>± .25</td> <td>± .025</td> </tr> <tr> <td>1 PLACE</td> <td>± .36</td> <td>± .036</td> </tr> </table>			mm	INCH	4 PLACES	± .10	± .010	3 PLACES	± .15	± .015	2 PLACES	± .25	± .025	1 PLACE	± .36	± .036	<p>DIMENSION STYLE</p> <p>IN/MM</p>		<p>SCALE</p> <p>---</p>		<p>DESIGN UNITS</p> <p>INCH</p>		<p>THIRD ANGLE PROJECTION</p>	
		mm	INCH																								
	4 PLACES	± .10	± .010																								
	3 PLACES	± .15	± .015																								
2 PLACES	± .25	± .025																									
1 PLACE	± .36	± .036																									
<p>DRAFT WHERE APPLICABLE MUST REMAIN WITHIN DIMENSIONS</p>		<p>DRAWN BY: GUZIK DATE: 11/15/89</p> <p>CHECKED BY: PATEL DATE: 11/15/89</p> <p>APPROVED BY: LENZ DATE: 11/15/89</p>		<p>TITLE</p> <p>TRIFURCON TERMINAL CRIMP TYPE, .156 CENTERS 18 TO 20 AWG WIRE</p>		<p>MATERIAL NO. SEE CHART</p>		<p>DOCUMENT NO. SD-6838</p>		<p>SHEET NO. 1 OF 2</p>																	
<p>THIS DRAWING CONTAINS INFORMATION THAT IS PROPRIETARY TO MOLEX INCORPORATED AND SHOULD NOT BE USED WITHOUT WRITTEN PERMISSION</p>																											

20 19 18 17 16 15 14 13 12 11 10 9 8 7 6 5 4 3 2 1

6838-(*)**

PART NO.	ENG. NO.	
08-50-0187	6838-(P909)	SEE NOTE 1
08-50-0189	6838-(P909)L	SEE NOTE 1
08-50-0275	6838-(P909)-A	

6838-A(*)**

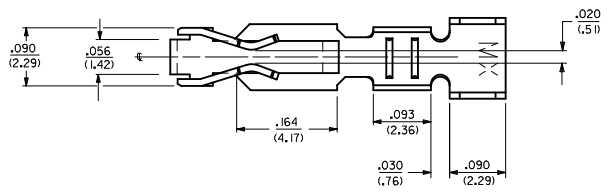
PART NO.	ENG. NO.	
08-58-0187	6838-A(P558)	
08-58-0189	6838-A(P558)L	
08-52-0112	6838-A(P909)	SEE NOTE 1
08-52-0113	6838-A(P909)L	SEE NOTE 1
08-50-0024	6838-A(154)	
08-50-0251	6838-A(154)L	
08-58-0105	6838-A(P555)	
08-58-0106	6838-A(P555)L	
08-58-0110	6838-A(P56 I)	SEE NOTE 1
08-58-0111	6838-A(P56 I)L	SEE NOTE 1
08-58-0118	6838-A(56 I)	
08-58-0119	6838-A(56 I)L	

NOTES:

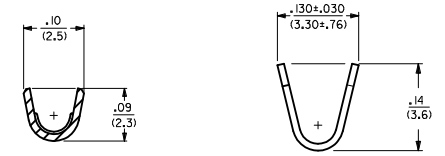
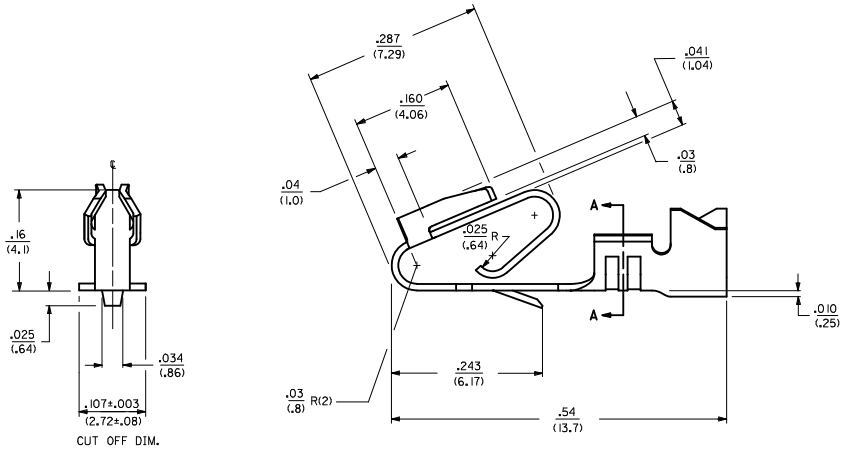
1. PART MANUFACTURED WITH ALTERNATE GEOMETRY. SEE SHEET 1.

SEE SHEET 1 IEC NO: UCF2012-1821 DRAWN BY: DRW:MMSTROH 2012/01/04 CHECKED BY: CHY:KH/KIPFER 2012/01/05 APPROVED BY: APPR:FSM/TH 2012/02/02	QUALITY SYMBOLS	GENERAL TOLERANCES (UNLESS SPECIFIED)	DIMENSION STYLE	SCALE	DESIGN UNITS	THIRD ANGLE PROJECTION
	▽=0	4 PLACES ± mm ± INCH	IN/MM	---	INCH	☉
	▽=0	3 PLACES ± mm ± INCH				
	▽=0	2 PLACES ± mm ± INCH				
		1 PLACE ± mm ± INCH				
		ANGULAR ±1/2°				
		DRAFT WHERE APPLICABLE MUST REMAIN WITHIN DIMENSIONS				
			DRAWN BY DATE	TITLE		
			GUZIK 11/15/89	TRIFURCON TERMINAL		
			CHECKED BY DATE	CRIMP TYPE, .156 CENTERS		
			PATEL 11/15/89	18 TO 20 AWG WIRE		
			APPROVED BY DATE	MOLEX INCORPORATED		
			LENZ 11/15/89	MATERIAL NO. SD-6838		
				DOCUMENT NO. 2 OF 2		
			SIZE D	THIS DRAWING CONTAINS INFORMATION THAT IS PROPRIETARY TO MOLEX INCORPORATED AND SHOULD NOT BE USED WITHOUT WRITTEN PERMISSION		

19 18 17 16 15 14 13 12 11 10 9 8 7 6 5 4 3 2 1



- NOTES:
1. MATERIAL: SEE LEGEND
 2. FINISH: 909 - OVERALL HOT TIN DIP: .000100/10.00254) MIN.
 3. PRODUCT SPECIFICATION: PS-40-02
 4. PACKAGING SPECIFICATION: PK-6838-001
 5. PART IS FOR USE WITH 18 TO 20 GA. WIRE WITH MAX. INSULATION DIA. OF .110/(2.79), STRIP LENGTH OF .125/.100 / (3.18/2.54).
 6. SEE 7258 SERIES FOR THIS PART WITH CRIMP FOR 22-26 AWG. WIRE.
 7. TERMINAL FOR USE IN 6442 AND 41695 SERIES HOUSINGS.
 8. DIMENSIONS GIVEN ACROSS CENTERLINES ARE SYMMETRICAL ABOUT THOSE CENTERLINES WITHIN HALF THE TOTAL TOLERANCE.
 9. THIS PART CONFORMS TO CLASS B REQUIREMENTS OF COSMETIC SPECIFICATION PS-45499-002.



SECTION A-A

CUT OFF DIM.

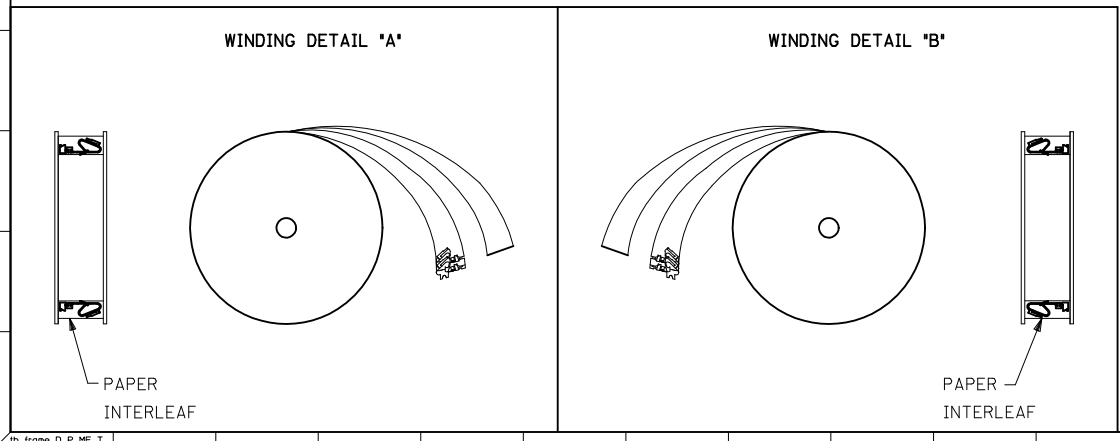
LEGEND: 6838- (P909) **

WINDING
BLANK= PER DETAIL B

FORM
BLANK= CHAIN

PLATING PER SDES-88
SEE NOTE 2

MATERIAL:
(.27)/.0106 THK
BLANK=BRASS



UPDATE GEOMETRY IEC NO. UCF2011-0681 DRAWN/KIPPER 2010/09/14 CHYKOS/SSOUSEK 2011/02/23 APPR:FSM/TH 2011/02/25	QUALITY SYMBOLS	GENERAL TOLERANCES (UNLESS SPECIFIED)	DIMENSION STYLE	SCALE	DESIGN UNITS	THIRD ANGLE PROJECTION
	$\nabla=0$ $\nabla=0$ $\nabla=0$	mm INCH 4 PLACES ± --- ± --- 3 PLACES ± --- ± .010 2 PLACES ± 0.25 ± .015 1 PLACE ± 0.36 ± --- ANGULAR ±1/2°	IN/MM	---	INCH	
	DRAFT WHERE APPLICABLE MUST REMAIN WITHIN DIMENSIONS	DRAWN BY JJS 07/29/10 CHECKED BY KSS 07/29/10 APPROVED BY YM 07/29/10	MATERIAL NO. 50291639 SIZE D	TITLE TRIFURCON TERMINAL CRIMP TYPE, .156 CENTERS 18 TO 20 AWG WIRE	MOLEX INCORPORATED DOCUMENT NO. SD-6838-001	SHEET NO. 1 OF 1
	THIS DRAWING CONTAINS INFORMATION THAT IS PROPRIETARY TO MOLEX INCORPORATED AND SHOULD NOT BE USED WITHOUT WRITTEN PERMISSION					