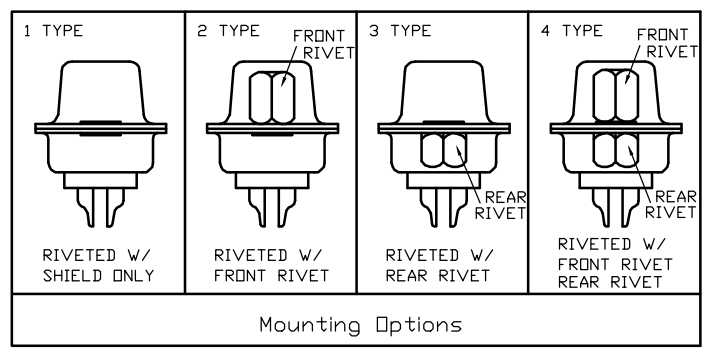
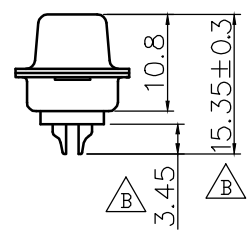
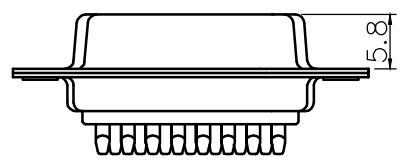
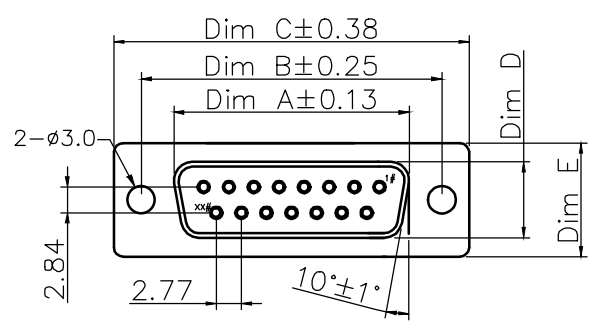


1 2 3 4 5 6 7 8



37P	54.84	63.50	69.32	7.90	12.50
25P	38.38	47.04	53.04	7.90	12.50
15P	24.66	33.32	39.14	7.90	12.50
9P	16.33	24.99	30.81	7.90	12.50
POS. NO.	A	B	C	D	E
	DIMENSION				

SPECIFICATIONS:
 Current rating:3.0A AC/DC
 Voltage rating:250V AC/DC
 Contact resistance:30m ohm MAX
 Insulation resistance:5000M ohm MIN
 Withstanding voltage:1000V AC for one minute
 Operating temperature range:-40°C ~ +85°C

MATERIAL AND FINISH
 Insulator:PBT+30%G.F(UL94V-0)
 Contact:Copper Alloy Nickel Undercoated Selective Gold Plated
 Sheel:Metal Iron With Tin Plated

PART NO.

Z-SUBDB * F * 0 * * * * *
 NO OF CONTACTS ——— *
 A=9PIN
 B=15PIN
 C=25PIN
 E=37PIN
 TYPE ——— *
 F=FEMALE
 MOUNTING OPTIONS ——— *
 0=NO ACCESSORY
 1=RIVETED W/SHIELD ONLY
 2=RIVETED W/FRONT RIVET
 3=RIVETED W/REAR RIVET
 4=RIVETED W/FRONT RIVET REAR RIVET
 CONTACT MATERIAL ——— *
 7=PHOSPHOR BRONZE
 LOGO
 0=NO LOGO
 2=NEXTRON LOGO Δ
 INSULATOR COLOR
 0=BLACK
 6=BLUE
 9=WHITE
 INSULATOR MATERIAL
 0=PBT
 2=NYLON
 PLATED
 1=FULL GOLD 1 μ "
 7=FULL LIGHT TIN
 A=GOLD 1 μ " / LIGHT TIN
 B=GOLD 3 μ " / LIGHT TIN
 C=GOLD 5 μ " / LIGHT TIN
 E=GOLD 15 μ " / LIGHT TIN

正凌精密工业(广东)有限公司
2016/7/20
 内部资料请勿复印

B	ECN-160074尺寸&料號代碼變更 Δ =3	7/14'16
A4	修正欄位公差	3/4'16
A3	UPDATED	8/12'15
REV.	DESCRIPTION	DATE

UNITS <input checked="" type="checkbox"/> mm <input type="checkbox"/> INCH	NAME: D-SUB 焊接式 PCB 母端	NEXTRON NEXTRONICS ENGINEERING CORP.	
GENERAL TOLERANCES: (UNLESS SPECIFIED)	PART NO: Z-SUBDB*F*07****	TITLE: CUSTOMER DWG	
	APPD: 楊海文 2016/7/20	DWG NO: 010-0000-599	
	CHKD: 廖小瓊 2016/7/15	SCALE: SHEET: REV.: 2/1 1/1 B	
	DRAWN: 何潔賢 2016/7/14		

A2

D-PRD-034