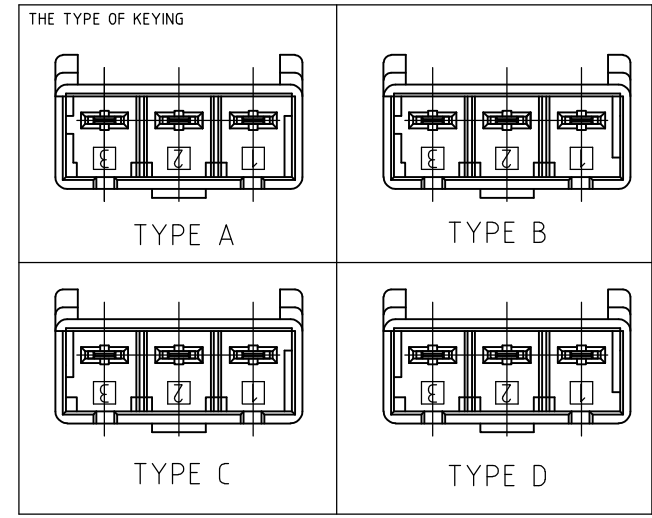
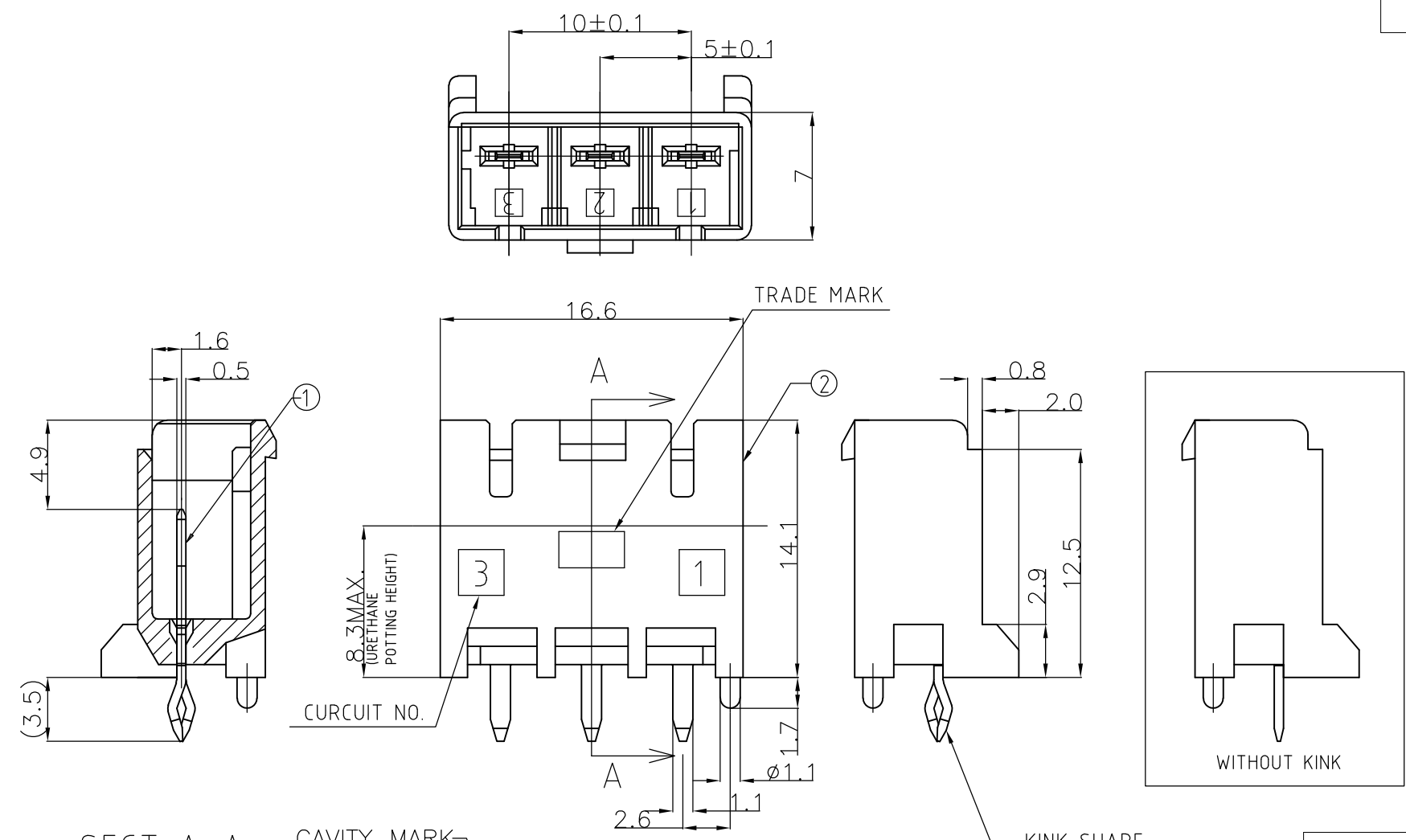
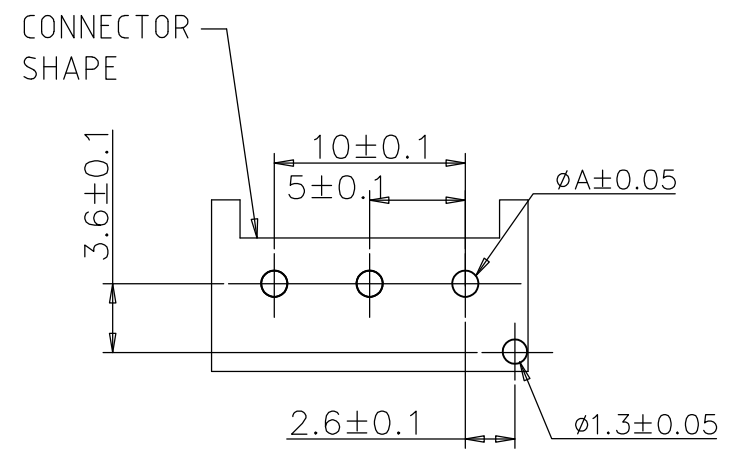


THIS DRAWING IS UNPUBLISHED. RELEASED FOR PUBLICATION  
 © COPYRIGHT - Tyco Electronics JAPAN G.K. ALL RIGHTS RESERVED.

P	LTR	DESCRIPTION	DATE	DWN	APVD
	H1	REVISED PER ECR-16-007444	31MAY2016	NK	SC



NO.	NAME	MATERIAL
②	HEADER HOISING	6/6 NYLON GRASS FILLED/ NYLON 6
①	TAB	COPPER ALLOY TIN PLATED



	DIM A
PUNCHING	1.25
DRILLING	1.4

① RECOMMENDED PCB HOLES

- ① RECOMMENDED P.C.B LAY OUT
- ② APPLICABLE P.C.B. THICKNESS:1.6
- ③ MATING CONN. P/N PLUG HOUSING :SEE TABLE
- ④ PARTS COMPLY WITH GLOW WIRE REQUIREMENT FOR PARTS OF NON-METALLIC MATERIAL SUPPORTING A CURRENT-CARRYING CONNECTION DETAILED IN IEC 60335-1, SECTION 30 (GWT).
- ⑤ NYLON 6, GWT, V-2.
- ⑥ NYLON 66, GWT, V-0.

⑤	1376389-5	WITH KINK	TYPE A	NATURAL	3Pos	1376383-5
⑥	3-1376389-4	WITHOUT KINK	TYPE D	YELLOW	3Pos	8-1376383-4
⑥	2-1376389-3	WITHOUT KINK	TYPE C	BLUE	3Pos	7-1376383-3
⑥	1-1376389-2	WITHOUT KINK	TYPE B	RED	3Pos	6-1376383-2
⑥	1376389-1	WITHOUT KINK	TYPE A	NATURAL	3Pos	5-1376383-1
⑥	3-1376389-4	WITH KINK	TYPE D	YELLOW	3Pos	3-1376383-4
⑥	2-1376389-3	WITH KINK	TYPE C	BLUE	3Pos	2-1376383-3
⑥	1-1376389-2	WITH KINK	TYPE B	RED	3Pos	1-1376383-2
⑥	1376389-1	WITH KINK	TYPE A	NATURAL	3Pos	1376383-1

MATING CONN. P/N	③	WITH/WITHOUT KINK	TYPE OF KEYING	Color	Pos	PART NO.
------------------	---	-------------------	----------------	-------	-----	----------

THIS DRAWING IS A CONTROLLED DOCUMENT.

DWN	A.OISHI	28AUG'00
CHK	Y.KASHIWA	28AUG'00
APVD	Y.KASHIWA	28AUG'00

PRODUCT SPEC: 108-5699  
 APPLICATION SPEC: 114-5292

STE TE Connectivity  
 5.0 POWER KEY CONNECTOR  
 3P HEADER ASSEMBLY

SIZE	CAGE CODE	DRAWING NO	RESTRICTED TO
A3	00779	C-1376383	-

CUSTOMER DRAWING SCALE 3:1 SHEET 1 OF 1 REV H1