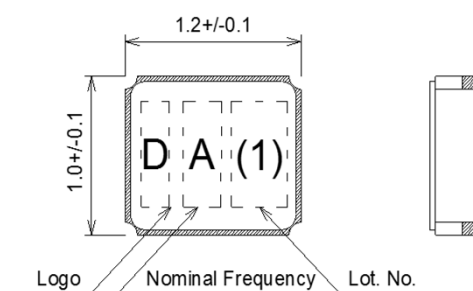


SPECIFICATION OF SURFACE MOUNT TYPE

1 .TYPE	DST1210A
2 .NOMINAL FREQUENCY	32.768 kHz
3 .OVERTONE ORDER	Fundamental
4 .LOAD CAPACITANCE(CL)	9.0 pF
5 .FREQUENCY TOLERANCE	$\pm 20 \times 10^{-6}$ (at $+25 \pm 3^{\circ}\text{C}$ )
6 .DRIVE LEVEL	0.1 $\mu\text{W} \pm 20\%$ (0.2 $\mu\text{W}$ max.)
7 .SERIES RESISTANCE	80 k $\Omega$ max. (at CL=Series)
8 .TURNOVER TEMPERATURE	$+25 \pm 5^{\circ}\text{C}$
9 .PARABOLIC COEFFICIENT	$-0.04 \times 10^{-6} / ^{\circ}\text{C}^2$ max.
10 .OPERATING TEMPERATURE RANGE	-40 ~ +85 $^{\circ}\text{C}$
11 .STORAGE TEMPERATURE RANGE	-40 ~ +85 $^{\circ}\text{C}$
12 .SHUNT CAPACITANCE(C0)	1.1 pF Typ.
13 .INSULATION RESISTANCE	500 M $\Omega$ min. (at DC 100 $\pm$ 15V)
14 .DIMENSIONS	Refer to Fig-1



&lt;TOP VIEW&gt;

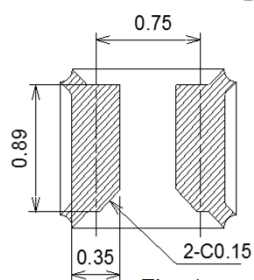
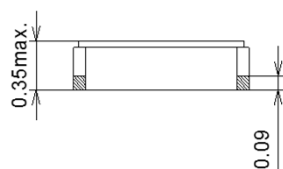
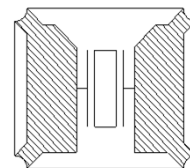


Fig.-1

**D** : manufacturer's code  
**A** : Nominal Frequency  
**(1)** : Lot. No.