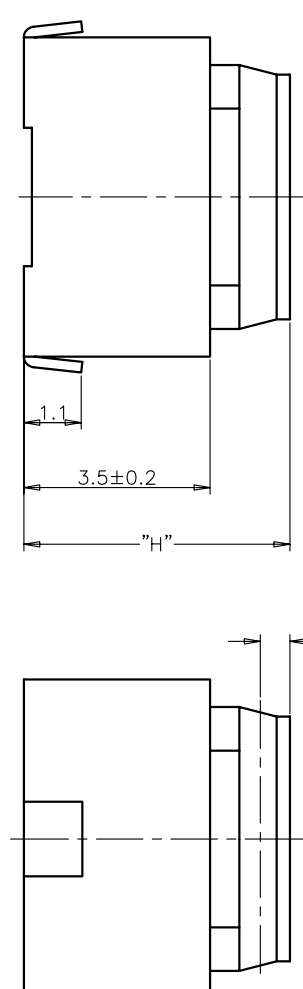


规格 Specifications

额定负荷 Rating	DC 12V/50mA
接触电阻 Contact Resistance	100mΩ max.
绝缘电阻 Insulation resistance	DC100V 60S 100MΩ min.
抗电强度 Dielectric strength	AC250V (50~60Hz) 60S min.
操作力 Operation force	≤ 180 ± 30gf
寿命试验 Operating life	100,000cycles ≥ 250 ± 50gf
行程 Travels	100,000cycles 看左侧编带说明



PRODUCT NO. : 1TS009\*\*\*\*\*-\*\*\*\*\*-CT

- 轻触开关 TMRV 系列
- 外形: A=弧盖弯脚 B=平盖弯脚 C=弧盖平脚 D=平盖平脚
- 按钮颜色: 底座颜色: 盖板颜色:
- 操作力度: 160=160±30gf, 180=180±30gf, 250=250±50gf, 260=260±50gf, 280=280±50gf, 300=300±50gf
- 手感: 0=常规, 1=大手感, 2=小手感, 3=特殊手感
- 产品高度 (H): 430±4, 3mm (行程: 0.7±0.2mm), 500=5.0mm (行程: 1.3±0.2mm)
- 材质: 0=LCP, 1=新增材质, 依次增加
- 编带 非编带, 不启用

ITEM	PART NAME	QUANTITY	MATERIAL	FINISH
5	COVER	1	LCP	BLACK
4	ACTUATOR	1	SILICONE	/
3	CONTACT	1	STAINLESS STEEL	Ag-PLATED
2	TERMINAL	2	BRASS	Ag-PLATED
1	HOUSING	1	LCP	BLACK

X. ± 0.3	X' ± 3'	UNITS	MM	NAME (INTENDED USE)	HON YUAN
.X ± 0.2	X' ± 2'	MAT'L		TMRV SERIES TACT SWITCH	HON YUAN PRECISION IND. CO., LTD. SHENZHEN, CHINA.
.XX ± 0.1	.XX' ± 1'	FINISH		1TS009B-*****-***0	PRODUCT DRAWING
.XXX ± 0.05	.XXX' ± 0.5'			APPD: ZO 2015-11-10	DWG NO.: 1TS009B
		Q'TY		CHKD: LI 2015-11-10	SCALE SHEET
				DRY.Y.Chen 2015-11-10	10/1

THESE DRAWINGS AND SPECIFICATIONS ARE THE PROPERTY OF HON YUAN PRECISION IND. CO., LTD. AND SHALL NOT BE REPRODUCED, COPIED OR USED IN ANY MANNER WITHOUT THE PRIOR WRITTEN CONSENT OF HON YUAN PRECISION IND. CO., LTD.