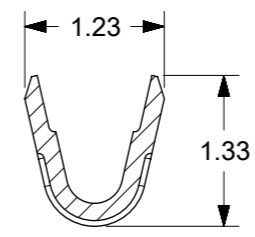
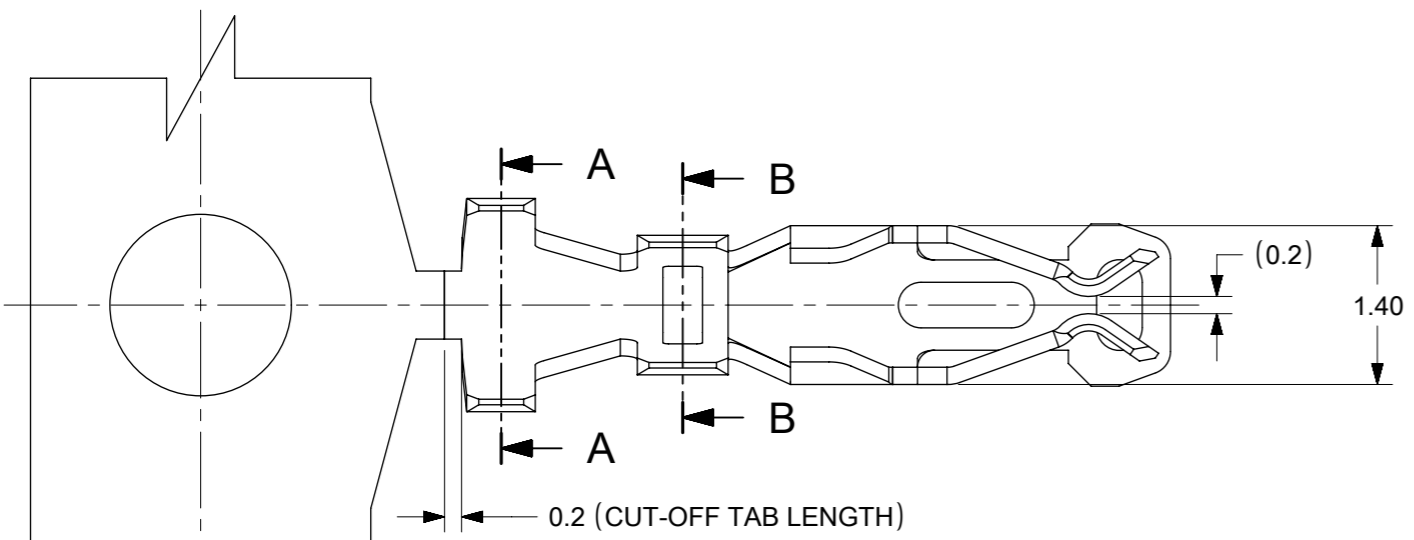
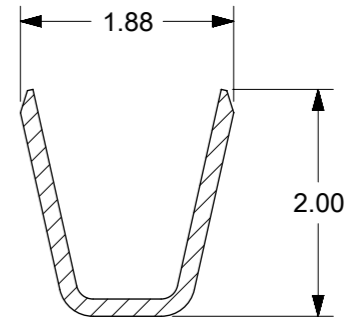


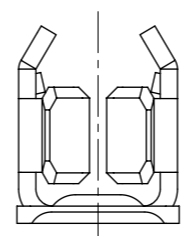
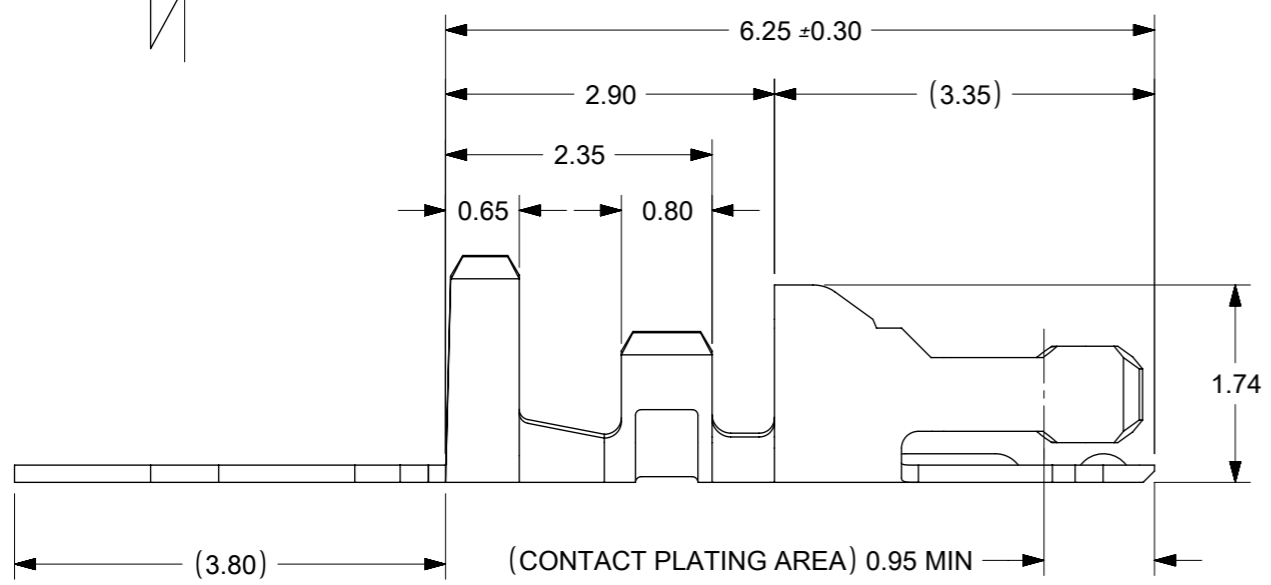
ENG. P/NS		CONTACT PLATING (NICKEL OVERALL 2-6 μm MIN)
FORM : LOOSE	FORM : CHAIN	
50394-8100	50394-8051	0.38μm GOLD MIN.
50394-8200	50394-8052	0.76μm GOLD MIN.
50394-8400	50394-8054	GOLD FLASH 0.05 - 0.125μm
50394-8500	50394-8055	2.50μm MATTE TIN MIN.



SECTION B-B

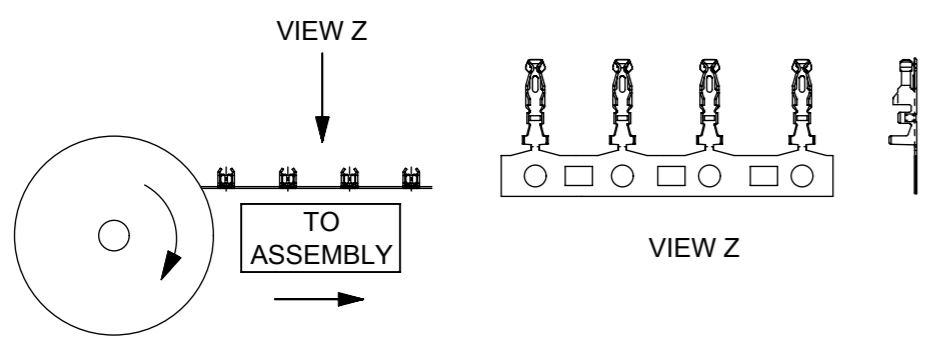


SECTION A-A



- NOTES :
- MATERIAL: COPPER ALLOY
  - APPLICABLE HOUSING : 51110-\*\*\*1  
: 51110-\*\*5\*  
: 151100-00\*\*
  - APPLICABLE WIRE: AWG #24-#30  
WIRE INSULATION OD: 1.40mm MAX.
  - CRIMPING SPECIFICATION: CS-50394

WINDING DIRECTION



THIS DRAWING CONTAINS INFORMATION THAT IS PROPRIETARY TO MOLEX ELECTRONIC TECHNOLOGIES, LLC AND SHOULD NOT BE USED WITHOUT WRITTEN PERMISSION									
QUALITY SYMBOLS	RE-MASTERED IN ELECTR	EC NO: 116436	DRWN: MUM	CHKD: GMENARLY	REV APPR: KHLIM	GENERAL TOLERANCES (UNLESS SPECIFIED)		DIMENSION UNITS	SCALE
						MM	INCH	MM	NTS
▽ = 0	2016/08/17	2017/05/08	2017/05/19	4 PLACES	±	±	DRWN BY	DATE	<p>SALES DRAWING 2.0MM GRID W TO B CONN. CRIMP TERMINAL</p> <p>PRODUCT CUSTOMER DRAWING</p>
▽ = 0	2016/08/17	2017/05/08	2017/05/19	3 PLACES	±	±	S.Q	1994/04/20	
▽ = 0	2016/08/17	2017/05/08	2017/05/19	2 PLACES	± 0.2	±	CHK'D BY	DATE	
▽ = 0	2016/08/17	2017/05/08	2017/05/19	1 PLACES	±	±	EDPOH	1994/04/27	
▽ = 0	2016/08/17	2017/05/08	2017/05/19	0 PLACES	±	±	APPR BY	DATE	<p>SERIES: 50394</p> <p>MATERIAL NUMBER: SEE TABLE</p> <p>CUSTOMER: GENERAL MARKET</p>
▽ = 0	2016/08/17	2017/05/08	2017/05/19	0 PLACES	±	±	LBLEE	2013/11/13	
▽ = 0	2016/08/17	2017/05/08	2017/05/19	ANGULAR TOL = 3.0		DRAFT WHERE APPLICABLE MUST REMAIN WITHIN DIMENSIONS	DRAWING SIZE	THIRD ANGLE PROJECTION	<p>DOCUMENT NUMBER: SD-50394-8XXX</p> <p>DOC TYPE: PSD</p> <p>DOC PART: 000</p> <p>SHEET NUMBER: 1 OF 1</p>
▽ = 0	2016/08/17	2017/05/08	2017/05/19	ANGULAR TOL = 3.0		DRAFT WHERE APPLICABLE MUST REMAIN WITHIN DIMENSIONS	A3		

RELEASE STATUS	RELEASE DATE
----------------	--------------