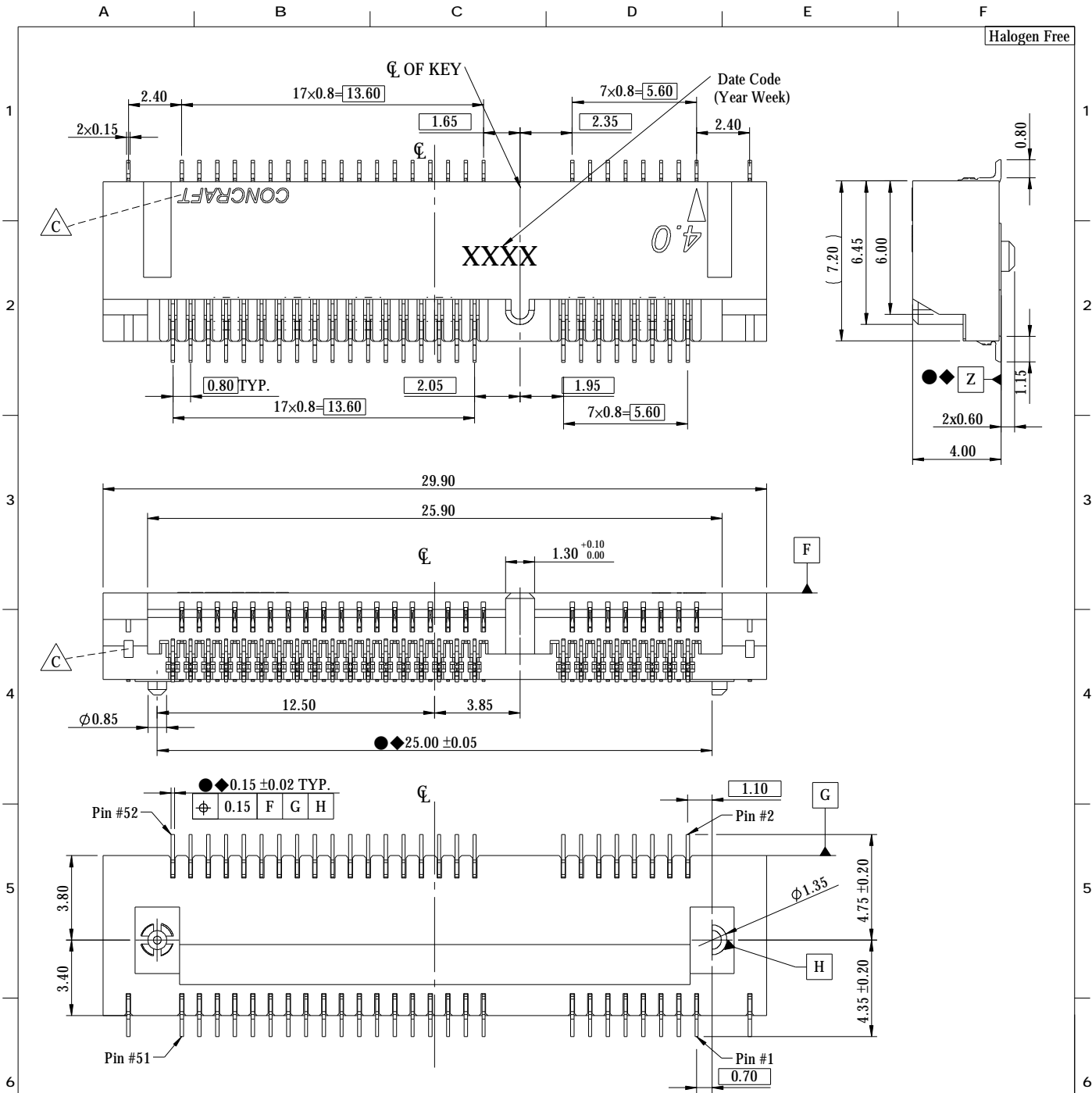


Halogen Free



NOTE:

- SOLDER TAIL TO BE WITHIN 0.05mm UPWARD AND 0.2mm DOWNWARD FROM Z-DATUM PLACE, AND COPLANARITY OF SOLDER TAILS TO BE WITHIN 0.10mm. MEASUREMENT POINT IS SOLDER TAILS TIP.
- HSF:HSF CONCRAFT LEVEL1
- MATERIAL:  
HOUSING :HIGH-TEMPERATURE PLASTIC;  
COLOR:BLACK,UL 94 V-0  
TERMINAL:COPPER ALLOY

4.FINISH:

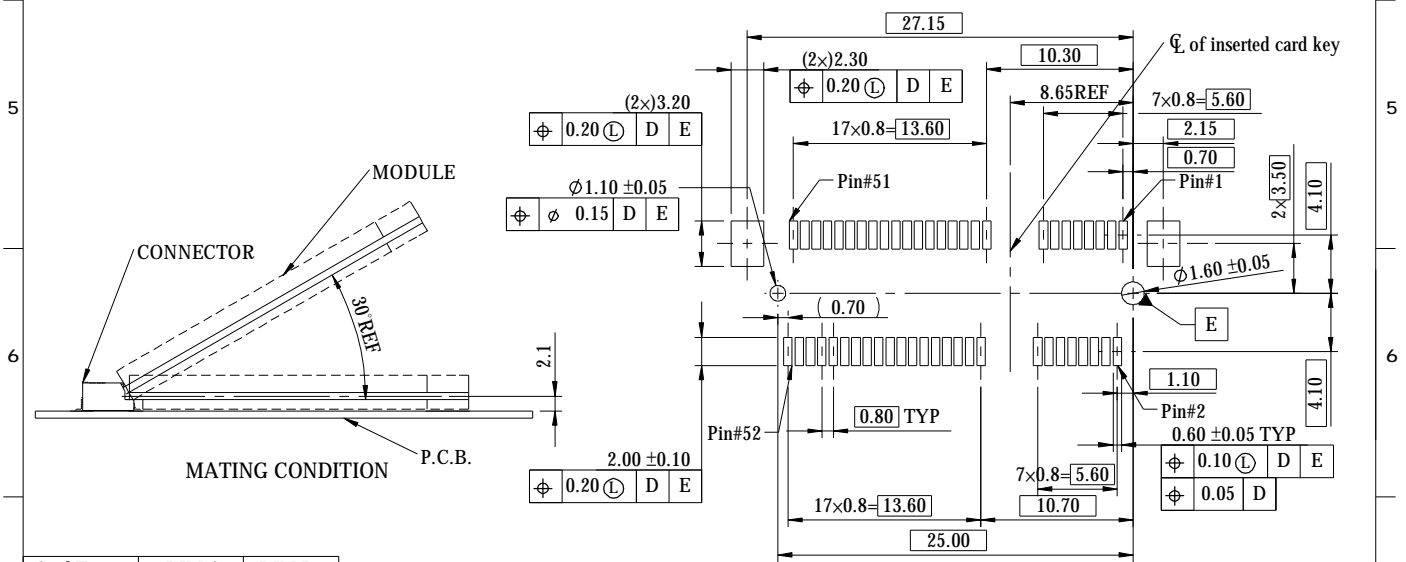
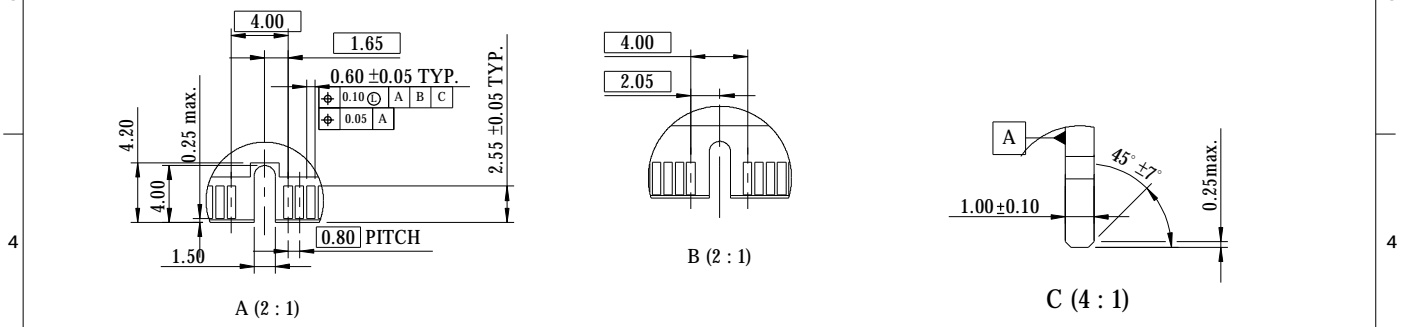
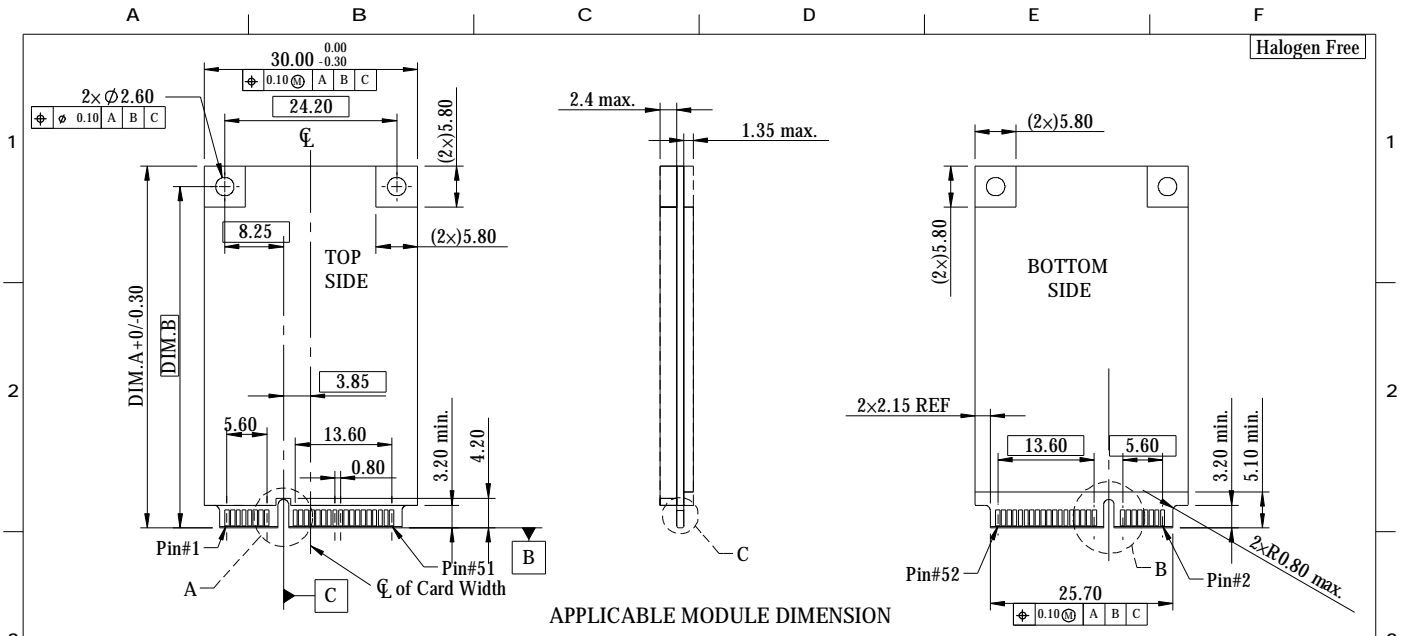
- TERMINAL:  
NICKEL UNDERPLATING ALL OVER BASE MATERIAL  
CONTACT AREA : GOLD FLASH PLATING OVER UNDERPLATE  
SOLDER AREA : GOLD FLASH PLATING OVER UNDERPLATE

5. INSPECTION SYMBOL:

- : MANUFACTURER INSPECTION
- ◆ : Q.C INSPECTION

|                     |         |                   |       |                   |             |                  |                           |
|---------------------|---------|-------------------|-------|-------------------|-------------|------------------|---------------------------|
|                     |         |                   |       | GENERAL TOLERANCE |             | DRAW:            | PART NO:                  |
|                     |         |                   |       | X. ±0.30          | X° ±2.00°   | Allen Ma         | 0717A0BA40C               |
|                     |         |                   |       | .X ±0.20          | .X° ±1.00°  | CHECKED:         | TITLE:                    |
|                     |         |                   |       | .XX ±0.10         | .XX° ±0.50° |                  | MINI PCI EXPRESS ASSEMBLY |
|                     |         |                   |       | .XXX ±0.05        |             | APPROVE:         | DRAWING NO:               |
| 8                   | B       | E100161A          | Mason | 06/01/2010        | UNITS: mm   | DATE: 09/13/2013 | 0717A0BA40C               |
| REV.                | ECO NO. | DRAW.             | DATE  |                   |             |                  |                           |
| MATERIAL: SEE NOTES |         | FINISH: SEE NOTES |       | SCALE: 4 : 1      |             |                  |                           |

Halogen Free



| Card Types  | DIM.A | DIM.B |
|-------------|-------|-------|
| 7 HALF CARD | 26.80 | 23.90 |
| FULL CARD   | 50.95 | 48.05 |

| REV.                   | ECO NO. | DRAW                 | DATE     | GENERAL TOLERANCE |                 | DRAW:<br>Allen Ma | PART NO:<br>0717A0BA40C |                                  |
|------------------------|---------|----------------------|----------|-------------------|-----------------|-------------------|-------------------------|----------------------------------|
|                        |         |                      |          | X. ±0.30          | X° ±2.00°       |                   |                         |                                  |
| 8                      | C       | E130421A             | Allen Ma | 09/13/2013        | .X ±0.20        | .X° ±1.00°        | CHECKED:                | TITLE: MINI PCI EXPRESS ASSEMBLY |
|                        |         |                      |          |                   | .XX ±0.10       | .XX° ±0.50°       |                         |                                  |
|                        |         |                      |          |                   | .XXX ±0.05      |                   |                         |                                  |
| 8                      | B       | E100161A             | Mason    | 06/01/2010        | UNITS: mm       | DATE: 09/13/2013  | APPROVE:                | DRAWING NO:<br>0717A0BA40C       |
|                        |         |                      |          |                   |                 |                   |                         |                                  |
| REV.                   | ECO NO. | DRAW                 | DATE     |                   |                 |                   |                         |                                  |
| MATERIAL:<br>SEE NOTES |         | FINISH:<br>SEE NOTES |          | SCALE:<br>1 : 1   | SHEET:<br>2 / 2 | REV.<br>C         |                         |                                  |