

NOTE:

1. INSPECTION SYMBOL:

●:MANUFACTURER INSPECTION

◆:Q.C INSPECTION

2.REMARK:

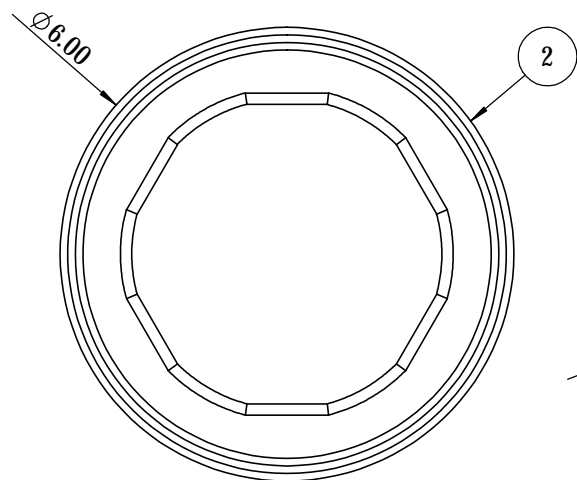
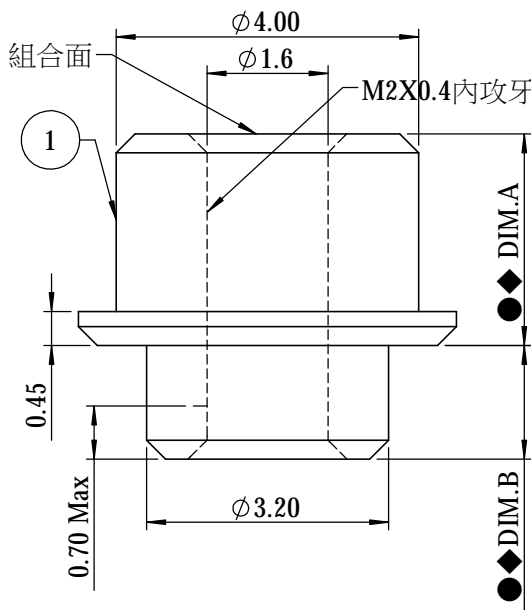
(1): HARDWARE:BRASS ;

FINISH:MATTE TIN PLATING OVER NICKEL

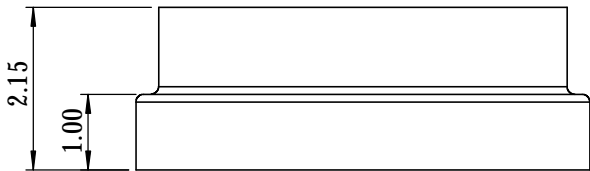
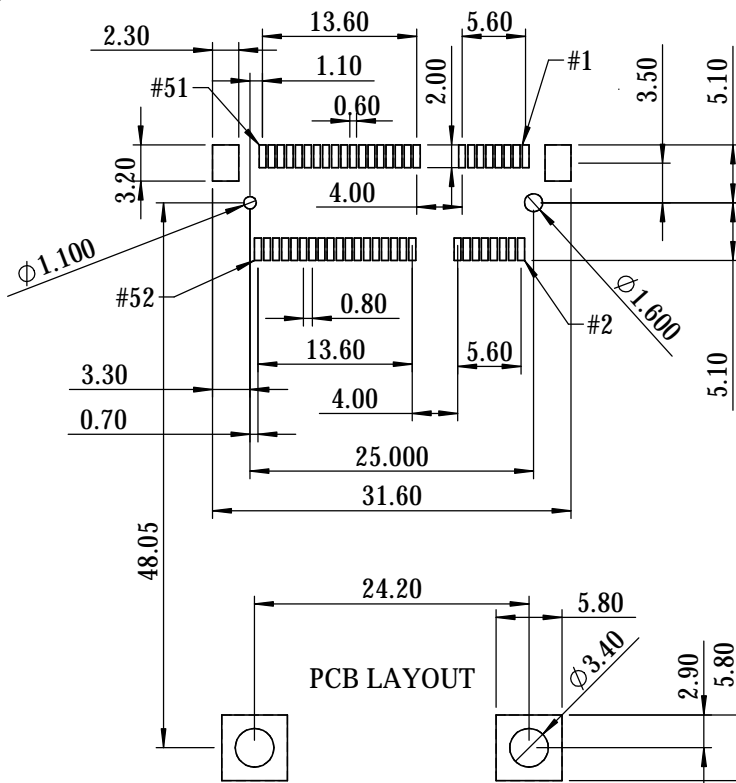
(2): PLASTIC(OPTION),LCP, COLOR:BLACK(UL94V-0) .

3.PLEASE REFER TO TABLE 1 FOR THE LENGTH STANDARDS.

4. 高度3.2及以上允許無效牙0.7MAX且內徑底部不倒角，材質&電鍍需符合無有害物質CONCRAFT LEVEL1。
TABLE 1



PART NO.	DIM. A±0.10	DIM. B±0.10
071CAAZ40B	1.60	1.50
071CAAZ49B	2.50	1.50
071CAAZ52B	2.80	1.50
071CAAZ56B	3.20	1.50
071CAAZ60B	3.60	1.50
071CAAZ68B	4.40	1.50
071CAAZ80B	5.60	1.50
071CAAZ90B	6.60	1.50
071CAAZ92B	6.80	1.50
071CAAZ99B	7.50	1.50



REV.	ECO NO.	DRAW	DATE	GENERAL TOLERANCE	DRAW:	PART NO:
F	E150173A	XIAO	04/30/2015	X. ±0.30 .X ±0.20 .XX ±0.10 .XXX ±0.05		071CAAZ□□B
E	E080317A	Roy	11/04/2008	X.° ±2.00° .X° ±1.00° .XX° ±0.50°	CHECKED:	TITLE: MINI PCI EXPRESS ASSEMBLY OF FIXED
D	E080051A	Andrew	03/19/2008	UNITS: mm	APPROVE:	DRAWING NO: 071CAAZ□□B
				SHEET: 1 / 1		
MATERIAL:	FINISH:	DATE:	REV.			
SEE NOTES	SEE NOTES	04/30/2015	F			