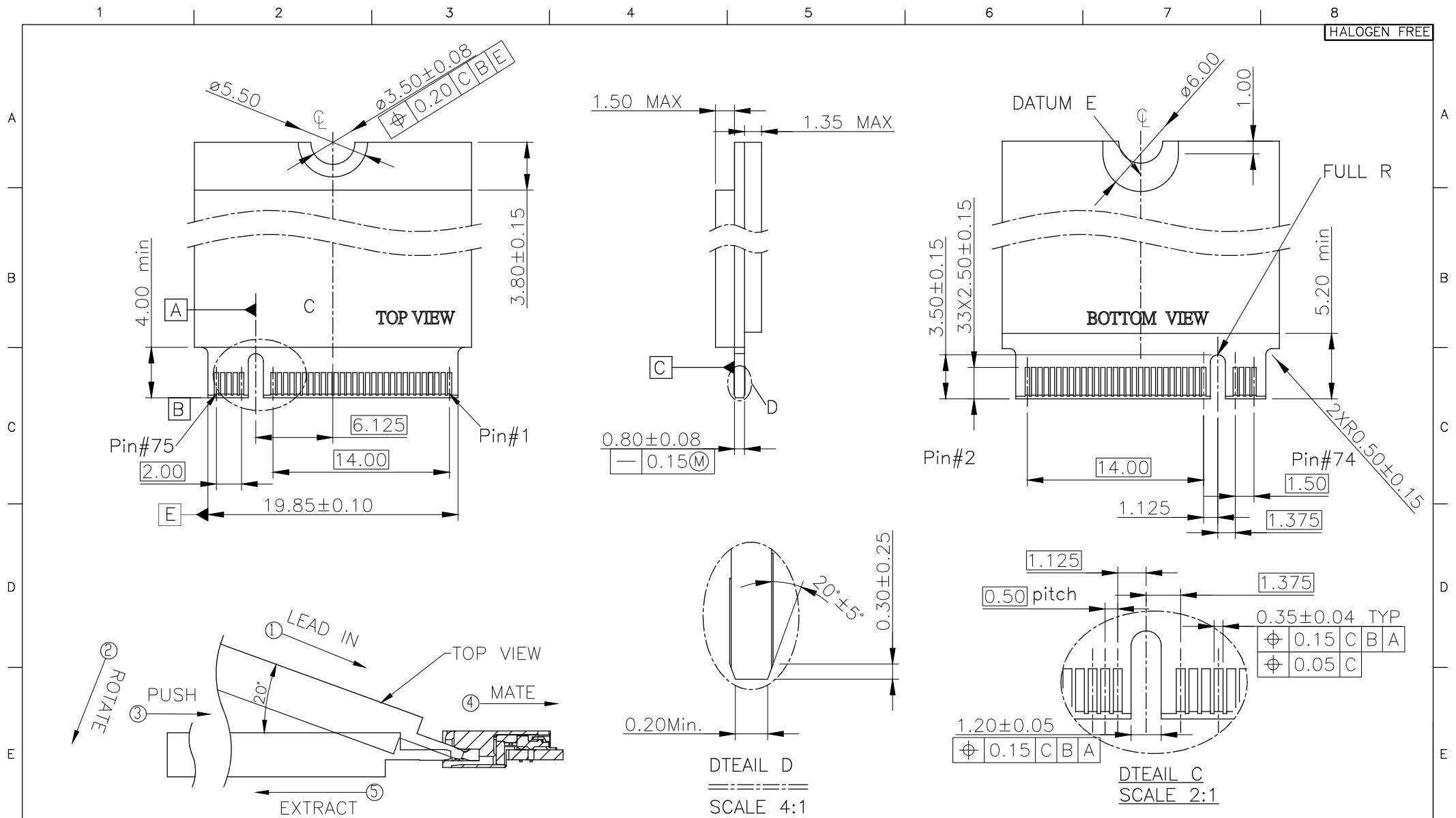


NOTES:

- MATERIAL:  
HOUSING : HIGH-TEMPERATURE PLASTIC, COLOR:BLACK, UL94 V-0  
TERMINAL : COPPER ALLOY  
FITTING NAIL : STAINLESS STEEL
- FINISH:  
TERMINAL: GOLD FLASH ON CONTACT AREA, MATTE TIN  
ON SOLDER AREA, NICKEL 40~150u" UNDER PLATING.  
FITTING NAIL: MATTE TIN 60~200u" PLATING OVERALL,  
NICKEL 40~150u" UNDER
- HSF: HSF CONCRAFT LEVEL 1
- INSPECTION SYMBOL:  
●: MANUFACTURER INSPECTION  
◆: QC INSPECTION

ITEM	DESCRIPTIONS	MATERIAL	FINISH	Q'TY	NOTE
④	FITTING NAIL	STAINLESS STEEL	MATTE TIN	2	
③	CONTACT-2	COPPER ALLOY	GOLD/MATTE TIN	34	
②	CONTACT-1	COPPER ALLOY	GOLD/MATTE TIN	33	
①	BASE	HIGH TEMP. PLASTIC		1	BLACK

				UNITS: mm	GENERAL TOLERANCE		DRAW:	PART NO: 212MAC1290A5000
				DATE: 12/15/2015	X. ±0.30	X.* ±2.00"	CHECKED:	TITLE: NGFF(M.2) M TYPE ASSEMBLY
				SCALE: 2.5:1	.X ±0.20	.X* ±1.00"	APPROVE:	CUSTOMER NO: 212MAC1290A5000
				SHEET: 1/2	.XX ±0.15	.XX* ±0.50"		
A	E150559A	XIAO	12/15/2015	REV. A	SIZE: A4	3rd ANGLE PROJECTION		
REV.	ECN NO.	DRAW.	DATE	REV.				



HOW TO MATE AND UNMATE  
 MATE : STEP 1 to STEP 4  
 EXTRACT : STEP 5  
 NOTE: Mating force will generate from step 3 to step 4

				UNITS: mm	GENERAL TOLERANCE		DRAW:	PART NO.:
				DATE: 12/15/2015	X. $\pm 0.30$	X* $\pm 2.00'$	CHECKED:	212MAC1290A5000
				SCALE: 2.5:1	.X $\pm 0.20$	.X* $\pm 1.00'$	APPROVE:	TITLE: NGFF(M.2) M TYPE ASSEMBLY
				SHEET: 2/2	.XX $\pm 0.15$	.XX* $\pm 0.50'$		CUSTOMER NO.:
				REV: A	.XXX $\pm 0.10$	.XXX* $\pm 0.10'$		212MAC1290A5000
A	E150559A	XIAO	12/15/2015	SIZE: A4	3rd ANGLE PROJECTION			
REV.	ECN NO.	DRAW.	DATE					