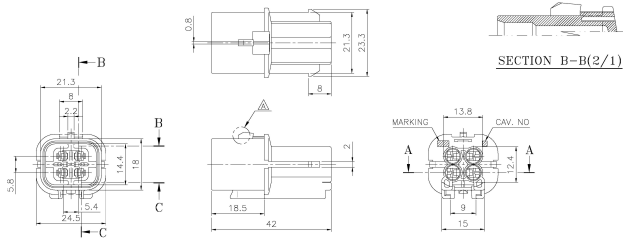
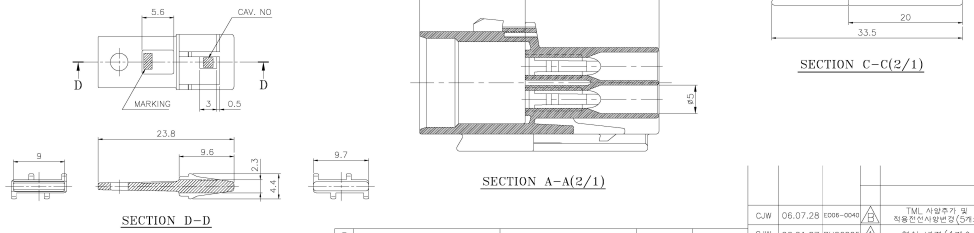


CUSTOMER DRAWING

①②③④ CONN. NMWP04MA



⑤ F/H. NMWP04M(2/1)



GENERAL TOLERANCE							
	10MAX	50MAX	100MAX	150MAX	200MAX	200VR	ANGLE
A	±0.2	±0.3	±0.5	±0.8	±1.0	±1.4	±30°

NO.	PART NAME	PART NO.	COLOR	MATERIAL
⑤	F/H NMWP04M-OR	PB871-04900	ORANGE	PBT
④	CONN. NMWP04MA-BR	PB621-04850	BROWN	PBT
③	CONN. NMWP04MA-L	PB621-04840	BLUE	PBT
②	CONN. NMWP04MA-B	PB621-04820	BLACK	PBT
①	CONN. NMWP04MA-GY	PB621-04120	GLAY	PBT

— 주 기 —

- MARKING 및 CAV. NO.는 당사 규정에 의하여 따로 할 것.
- 맞대 MATCHING CONNECTOR : NMWP CONN. RECEIVER.
- ASSY 부품
  - FRONT HOLDER : PB871-04900
  - TERMINAL

재료 명(ISO)	PART NAME	PART NO.
ALUMINUM 6063-T5 / ALUMINUM 6063-T5	NMWP-M-S	MP091-03290
ALUMINUM 6063-T5 / ALUMINUM 6063-T5	NMWP-M-SM	MP091-03290
ALUMINUM 6063-T5 / ALUMINUM 6063-T5	NMWP-M-W	MP091-03290
ALUMINUM 6063-T5 / ALUMINUM 6063-T5	NMWP-M-SL	MP091-03290
ALUMINUM 6063-T5 / ALUMINUM 6063-T5	NMWP-M-SL-A	MP091-03290
ALUMINUM 6063-T5 / ALUMINUM 6063-T5	NMWP-M-W-SL	MP091-03290

재료 명(ISO)	PART NAME	PART NO.
WIRE SEAL 1.25x0.5x0.5 / WIRE SEAL 1.25x0.5x0.5	W/S WSP-03	RS220-01100
W/S SEAL 1.25x0.5x0.5 / W/S SEAL 1.25x0.5x0.5	W/S WSP-35	RS220-04100
W/S SEAL 1.25x0.5x0.5 / W/S SEAL 1.25x0.5x0.5	W/S WSP-5	RS220-02100
WIRE SEAL 1.25x0.5x0.5 / WIRE SEAL 1.25x0.5x0.5	W/S WSP-W	RS220-03100
WIRE SEAL 1.25x0.5x0.5 / WIRE SEAL 1.25x0.5x0.5	NMWP S/P ASSY	PZ001-15022

4. 본 부품은 비어싱 CONNECTOR.

CJW	06.07.28	ERR-004	△	TM. 사양추가 및 적용 안전성확보(승격소)	SSJ
CJW	06.01.27	BH06004	△	형상 변경(1기소)	SSJ
CJW	00.11.15	-	△	신 규	CYM

DRAWING NAME CONN. NMWP04MA-GY  
DRAWING NO. PB621-04120-C01B

**KUM** 케이유엠주식회사