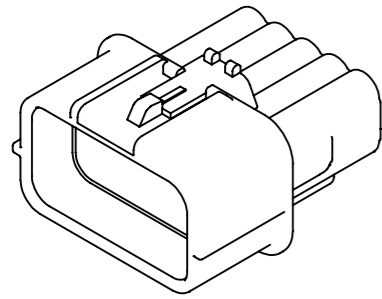
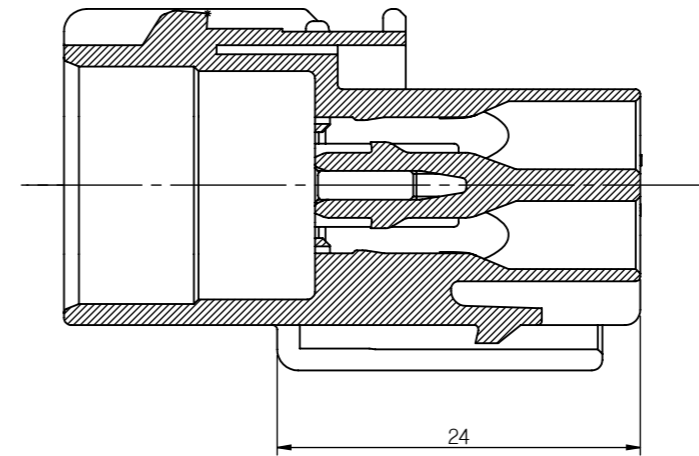
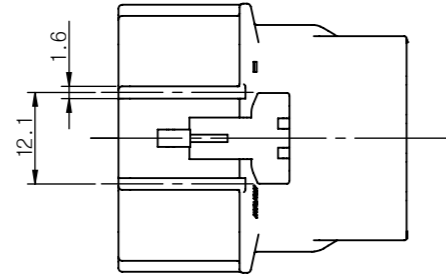


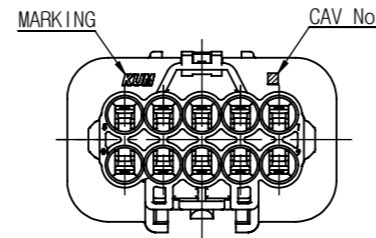
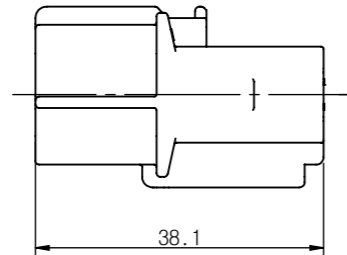
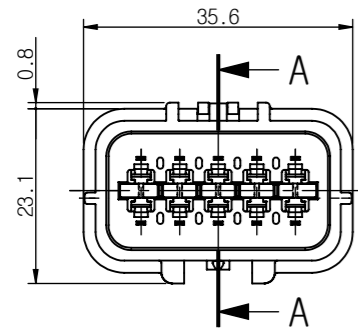
①③ AWP10M-B



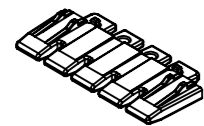
ISO VIEW(1/1)



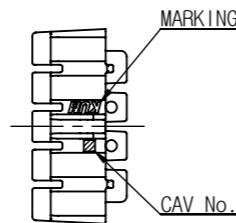
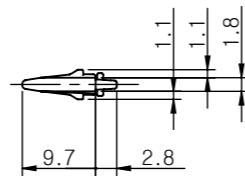
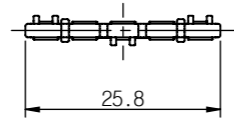
SECTION A-A(2/1)



② F/H AWP10M-L



ISO VIEW(1/1)



- 주 기 -

1. 사용상 유해한 흠, BURR등이 없을 것.
2. 명시되지 않은 공차는 일반공차에 준할 것.
3. CAV. No. 및 MARKING은 당사규격에 준하여 각인할 것.

4. ASSY 부품

1) FRONT HOLDER:HP411-10040

2) TERMINAL

적용 전선(SQ)	PART NAME	PART NO.
CHFUS 0.22	AWP-M-SS	TP131-00400
AESSX(F) 0.3~0.5	AWP-M-S	TP131-00100
AESSX(F) 0.75~1.25	AWP-M-M	TP131-00200

3) WIRE SEAL

적용 전선 표준사양경	PART NAME	PART NO.
Φ0.9	W/S AWP-0.9S(MB)	EB010-01140
Φ1.4	W/S AWP-1.4S(BR)	EB010-01050
Φ1.9	W/S AWP-1.9S(GN)	EB010-01030
Φ2.3	W/S AWP-2.3S(GY)	EB010-01120
Φ2.7	W/S AWP-2.7S(OR)	EB010-01100
-	W/S AWP-V(R)	EB010-01060

5. 본 부품은 방수형 CONNECTOR 임.



NO.	PART NAME	PART No.	COLOR	MATERIAL
③	AWP10M-GY	HP401-10120	GRAY	PBT
②	F/H AWP10M-L	HP411-10040	BLUE	PBT
①	AWP10M-B	HP401-10020	BLACK	PBT

승인	DATE	NOTE No.	SYM	ALTERATION	담당
CJW	15.06.17	E015-0171	△	색상 추가	PYI
CJW	10.12.20	E009-0282	△	신규	LDW

DRAWING NAME				AWP10M-B	
DRAWING No.				HP401-10020-C01A	

GENERAL TOLERANCE

	10MAX	50MAX	100MAX	150MAX	200MAX	200VR	ANGLE
A	±0.2	±0.3	±0.5	±0.8	±1.0	±1.4	±30'

THIRD ANGLE PROJECTION	A	1/1	KOT	KOT	KNJ	CJW
TOLERANCE		SCALE	DESIGN	DRAWN	CHECKED	APPROVED

**KUM** 케이유엠