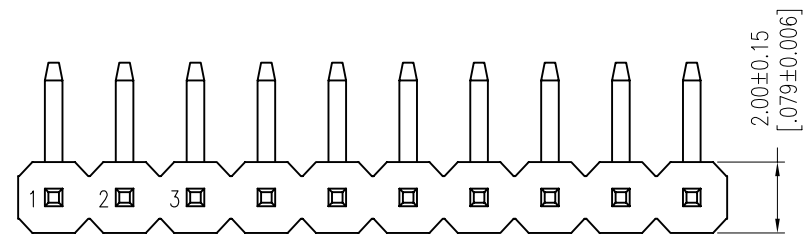


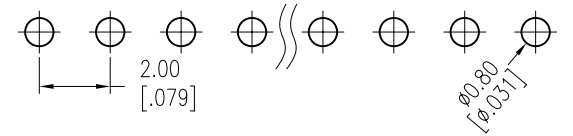
| | | |
|------|----------|-------|
| REV. | ECN. NO. | APPD. |
| A | | |

NOTES:
 Rated Current:2.0AMP.
 Contact Resistance:20mΩ Max.
 Withstand Voltage:500V AC/DC
 Insulation Resistance:1000MΩ Min.
 Operation Temperature:-40°C to +105°C

Contact Material:Brass
 Contact Plating:Au or Sn Over Ni
 Insulator Material:PA9T+30%G.F UL94V-0 BK

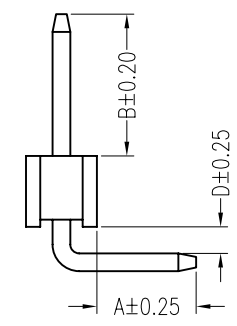
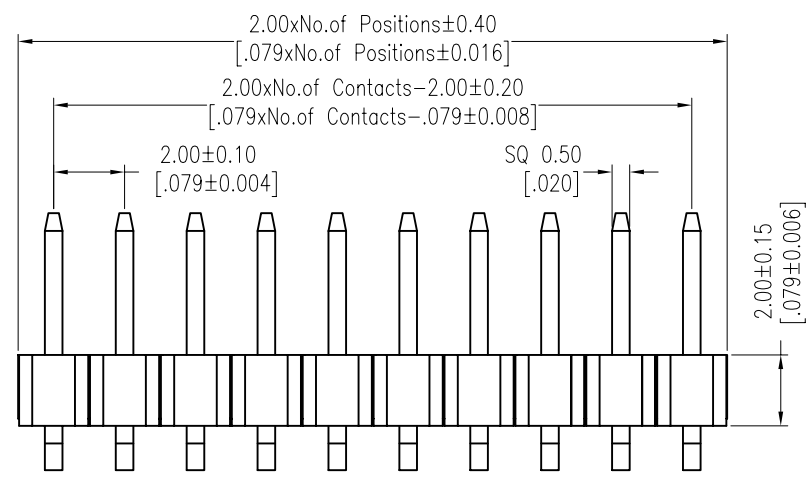
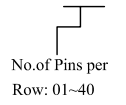


Recommended P.C.B Layout (Top Side)
 (PCB BOARD TOLERANCE±0.05)



Ordering Information

MTP220-11XXR1



| Item | Pin Length | A | D | B | Mating |
|-----------|------------|------|------|------|---------------------|
| Standard | 10.50 | 2.80 | 0.75 | 4.00 | 2240 2243 2263 2272 |
| Alternate | | | | | |

| | | | | | | |
|----------------------|--------------|----------|---------------------|------------------|-----------|-------------------------|
| X. ± 0.30 | X.° ± 5° | UNITS mm | NAME (INTENDED USE) | MINTRON CO.,LTD. | | |
| .X ± 0.20 | .X° ± 2° | | | | MAT'L | PART NO. (INTENDED USE) |
| .XX ± 0.10 | .XX° ± 1° | FINISH | APPD: SUNNY | DWG NO.: | | |
| .XXX ± 0.05 | .XXX° ± 0.5° | | CHKD: LISA | | | |
| PIN HEADER CONNECTOR | | Q'TY | DR: ZOE 2006-11-28 | | | |
| | | | | SCALE 1/1 | SHEET 1/1 | REV. A |