

REV.	ECH. NO.	APPD.
A		

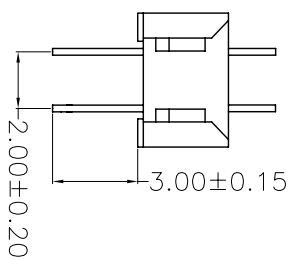
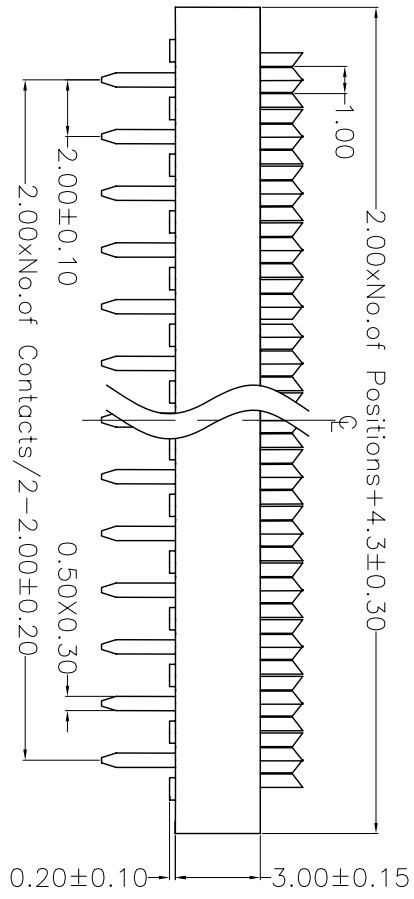
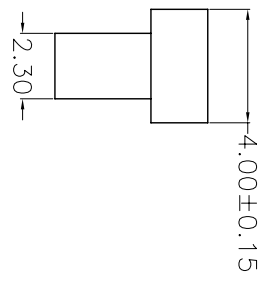
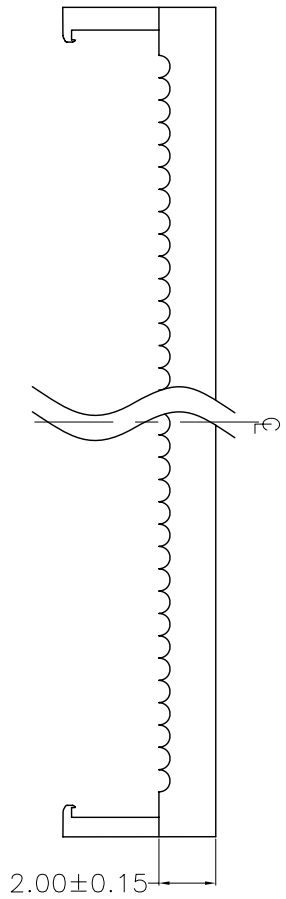
NOTES:

Current Rating: 1AMP
 Withstand Voltage: 1000V AC/Minute
 Contact Resistance: 20mΩ Max
 Insulation Resistance: 1000MΩ Min
 Operation Temperature: -40°C to +105°C
 Contact Material: Phosphor Bronze
 Contact plating: Au Or Sn Over Ni
 Insulator Material: Polyester(UL94V-0)
 Standard: PBT+30%G.F
 Cable Size: 1.00mm Pitch 30AWG

Ordering Information

MTFD20-XXP

- No. of Pins
- 10P 34P
 - 12P 36P
 - 14P 40P
 - 16P 44P
 - 18P 50P
 - 20P 60P
 - 22P 62P
 - 24P 64P
 - 26P 68P
 - 30P



X. ± 0.30	X.° ± 5°	UNITS mm	NAME (INTENDED USE)	MINTRON CO., LTD.
X ± 0.20	X° ± 2°	MAT'L	PART NO. (INTENDED USE)	
.XX ± 0.10	.XX° ± 1°	FINISH	APPD: SUNNY	TITLE: 2.00 DIP PLUG CONNECTOR
.XXX ± 0.05	.XXX° ± 0.5°		CHKD: LISA	DWG NO.: MTFD20-XXP
DIP PULG CONNECTOR		QTY	DR: ZOE	SCALE 1/1
			2006-11-28	SHEET 1/1
				REV. A