

**MATERIAL**

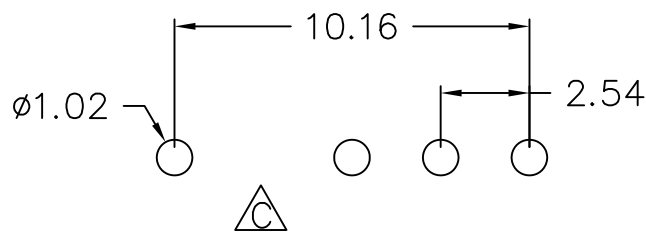
Insulator : NY66+30% Glass fiber  
 Contact Pin : Brass

**SPECIFICATION**

Current Rate : 3 AMP  
 Insulation Resistance : 5000MΩMin. at DC 500V  
 Contact Resistance : 20mΩMax. at DC 100mA  
 Dielectric Voltage : AC 500V for one minute  
 Operation Temperature : -40°C to + 105°C

210-8 1- 05 G B 03  
 1 2 3 4 5 6

- 1. 8: Green Product
- 2. 1: Single row  
2: Dual rows
- 3. No. of contacts per row
- 4. G: Gold flash  
S: Selective  
T: Tin plated
- 5. B: Black Insulator  
R: Red Insulator  
W: Nature color Insulator  
U: Blue Insulator
- 6. Pinrex internal code.



Recommended P.C.B Layout

		TOLERANCE		OLD PART NO.		TITLE		频锐科技股份有限公司 PINREX TECHNOLOGY CORP.
C	修改P.C.B Layout	2016/08/01	.0 =±.30	DRAWER 廖小芳		PIN HEADER 2.54*2.54mm STRAIGHT TYPE, SINGLE ROW		
B	REVISE SIZE	2008/01/16	.00 =±.20	UNITS : mm	CHECK	NEW PART NO. 210-81-05GB03		
A	RELEASE	2006/11/08	.000 =±.XXX	SCALE NONE	SHEET 1 OF 1	REV. C	APP'D	DRAW NO. 210-81-05GB03(C版)
REV.	DESCRIPTION	DATE	.0000=±. ANG.=±3'	SIZE A4				