

**HSF** RoHS **CAV** us **CE**

**SPECIFICATIONS**

Rated(额定参数): 300V,20A  
 Dielectric strength(抗电强度): AC2000V/1 Minute  
 Insulation Resistance(绝缘电阻):1000MΩ Min  
 Contact Resistance(接触电阻):20mΩ Max  
 Screw Torque(扭矩): 0.5Nm (4.4Lb.in)  
 Wire Range(线径):14~22AWG  
 Temp. range(操作温度): -40℃~+105℃  
 MAX Soldering(瞬时温度):+250℃,5s

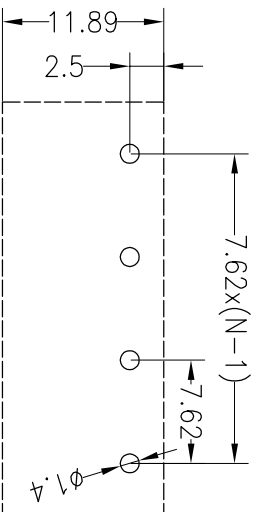
Housing Material(塑件): PA66 (UL94 V-0)  
 Contact(端子): Brass, Tin plating(黄铜镀锡)  
 Screw (螺丝): M3.0, Steel, Ni plating(钢,镀锌)

PITCH RANGE IN MM	NOMINAL DIMENSION RANGE IN MM							
	OVER	OVER	OVER	OVER	OVER	OVER		
TO 6	10	TO	30	TO	60	TO	100	OVER
TO 10	24	TO	30	TO	60	TO	100	OVER
±0.10	±0.15	±0.25	±0.30	±0.30	±0.50	±0.70	±1.00	±1.00

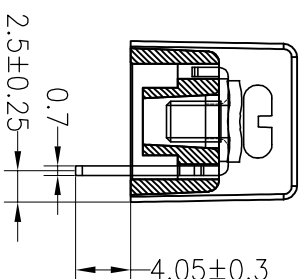
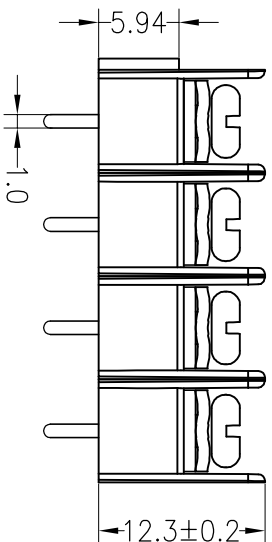
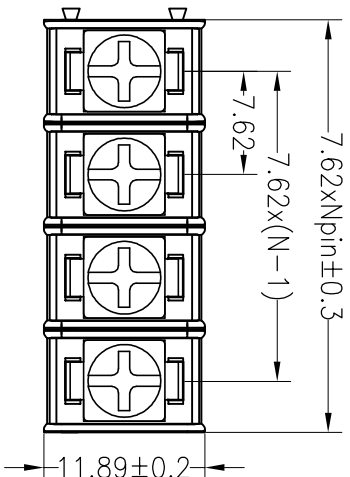
**Ordering Information**

JL762B - 762 XX X X 1

Pitch 762=7.62PH  
 No.of pins 2P~22P  
 Housing Color  
 B=Black  
 G=Green  
 U=Blue  
 R=Red  
 W=White  
 Y=Yellow  
 O=Orange  
 E=Grey  
 Packing  
 O=Pe bog  
 T=Tube  
 A=Troy



Recommended P.C.B Layout



REV	DATE	MODIFICATION DESCRIPTION	CHANGE	DIM	TOL	APPROVE	SCALE	FIT	TITLE:
A0	2018.10.07	NEW DRAWING		Angle	±3'	APPROVE	UNIT	mm	PART NO. JL762B-762XXXX1
1				OPERATION	±0.30	DRAW	SCALE	A4	TITLE: 7.62mm Terminal Blocks Female
				XX	±0.20	Yyusheng	UNIT	mm	
				X.XX	±0.10	18.10.07	SIZE	1/1	
				X:XXX			SHEET		
							PROJ.		

**JILIN** 深圳市锦凌电子有限公司  
 SHENZHEN JINLING ELECTRONIC CO.,LTD  
 Tel: 86-755-2997-5806/5802 Fax: 86-755-2997-5992