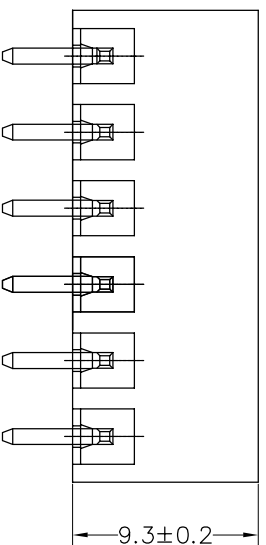
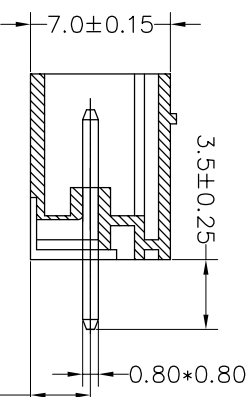
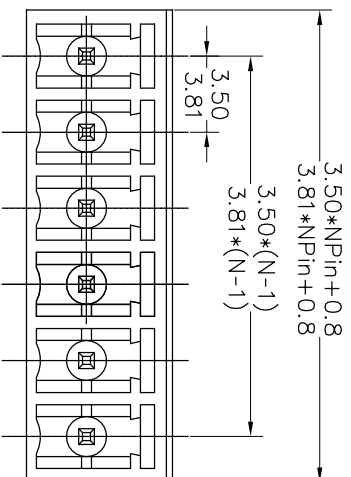


SPECIFICATIONS

Rated(额定参数): 300V,8A
 Dielectric strength(抗电强度): AC1500V/1 Minute
 Insulation Resistance(绝缘电阻):1000MΩ Min
 Contact Resistance(接触电阻):20mΩ Max
 Temp. range(操作温度): -40℃~+105℃
 MAX Soldering(瞬时温度):+250℃,5s

Housing Material(塑件): PA66 (UL94 V-0)
 Contact(端子): Brass, Tin plating(黄铜镀锡)

PITCH RANGE		NOMINAL DIMENSION RANGE					
IN MM		IN MM					
OVER	10	OVER	30	OVER	60	OVER	100
TO	6	TO	30	TO	60	TO	100
6	10	24	30	60	100	150	OVER
±0.10	±0.15	±0.25	±0.30	±0.30	±0.50	±0.70	±1.00



Ordering Information

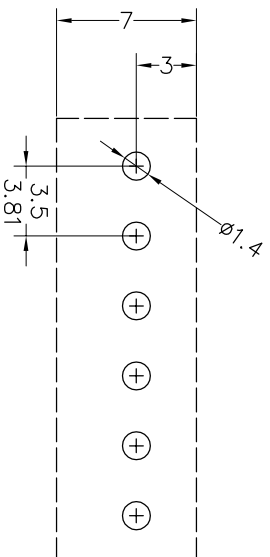
JL15EDGVC-XXX XX G X 1

Pitch
 350=3.5Pth
 381=3.81Pth

No. of pins
 2P~24P

Housing Color
 B=Black
 G=Green
 U=Blue
 R=Red
 W=White
 Y=Yellow
 O=Orange
 E=Grey

Packing
 0=Pe bog
 A=Troy
 T=Tube



Recommended P.C.B Layout(Top Side)

OPERATION	SCALE	FIT	PART NO.	
XX	±0.30	mm	JL15EDGVC-XXXXXXG1	
X.XX	±0.20	mm	3.50/3.81mm Pitch Male	
X:XXX	±0.10	mm	Pluggable Terminal Blocks	
Angle	±3°	1/1	TITLE:	
DIM	TOL	PROU.		
CHANGE	APPROVE			
DATE	MODIFICATION DESCRIPTION			
2017.12.22	NEW DRAWING			
REV				
A0				



深圳市锦凌电子有限公司
 SHENZHEN JINLING ELECTRONIC CO.,LTD
 Tel: 86-755-2997-5806/5802 Fax: 86-755-2997-5992