

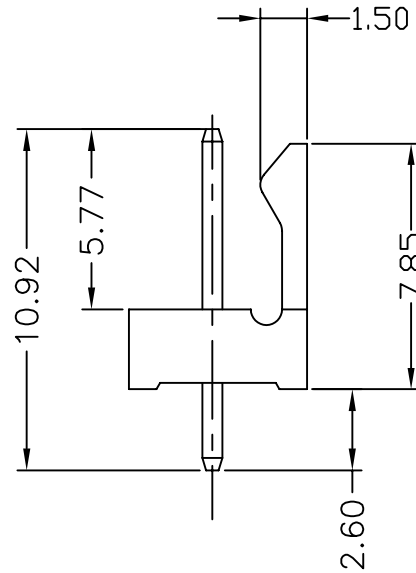
Recommended P.C.B Layout

**MATERIAL**

Insulator : NY66 + 30% Glass fiber  
Contact Pin : Brass

**SPECIFICATION**

Current Rate : 2.5 AMP  
Dielectric voltage : 250V AC for one minute  
Insulation Resistance : 1000MΩMin.  
Contact Resistance : 20mΩMax



744-8 1-02 T W OA  
1 2 3 4 5

- 1. 8: Green Product
- 2. No. of contacts per row
- 3. G: Gold flash  
S: Selective  
T: Tin plated
- 4. W: Nature Color Insulator
- 5. Pinrex internal code.

				<p><b>TOLERANCE</b></p> <p>.0 =±.50 .00 =±.30 .000 =±.XXX .0000=±. ANG.=±3'</p>		<p>UNITS : mm</p>		<p>OLD PART NO.</p>		<p>TITLE</p> <p>2.54mm WIRE TO BOARD HEADER DIP 180° TYPE</p>		<p>频锐科技股份有限公司 PINREX TECHNOLOGY CORP.</p>	
				SCALE	SIZE	SHEET	REV.	APP'D	NEW PART NO.		DRAW NO.		
A	RELEASE	2010/10/07		NONE	A4	1 OF 1	<b>A</b>		744-81-02TWOA		744-81-02TWOA		
REV.	DESCRIPTION	DATE											