

| | | | | TOLERANCE | | UMax 东莞市友贸实业有限公司 conn DONGGUAN UMAXCONN ENTERPRISE LIMITED | | TITLE: MINI PCI EXPRESS 8.0MM HEIGHT | | | |
|-----|---------|--------------|-------------|-----------|--------|---|---------|--------------------------------------|-------|--------|-----|
| | | | | LINEAR | ANGLES | | | PART NO. 91304-80-052RXXX | | | |
| | | | | X.±0.40 | X'± | APPD: Jason | MAT'L: | DWG NO. C-91304-80 | | | |
| | | | | .X±0.30 | .X'± | CHKD: Schumi | FINISH: | UNITS | SCALE | SHEET | REV |
| 0 | ---- | Lei Songping | Jun,06,2019 | .XX±0.20 | .XX'± | DRWN: Lei Songping | Q'TY: | MM | 1 : 1 | 1 OF 5 | 0 |
| REV | ECN NO. | NAME | DATE | .XXX±0.15 | .XXX'± | | | | | | |

NOTES:

1. MATERIAL:
 HOUSING: THERMOPLASTIC, HIGH TEMP, UL94V-0, BLACK COLOR,
 CONTACTS: COPPER ALLOY.
 PEGS: COPPER ALLOY.

2. FINISH:
 CONTACTS: SELECTED GOLD PLATING ON THE CONTACT AREA,
 1u" MIN. GOLD PLATING ON THE SOLDER TAILS,
 50 u" MIN. NICKEL UNDERPLATING OVER ALL.
 PEGS: 120u" MIN. MATTE-TIN OVER 50u" MIN. NICKEL.

3. PACKAGING SPECIFICATION: 9130404001

4. PRODUCT SPECIFICATION: PS-MINI PCI-E-01

5. DATE CODE.

YYWWDD

YY: YEAR (19: 2019)

WW: WEEK (25: THE 25TH WEEK)

DD: (D1~D7: SUNDAY~SATURDAY)

PRODUCT NUMBER CODE

91304 - 80 - 052 R X XX


80: 8.0H HEIGHT

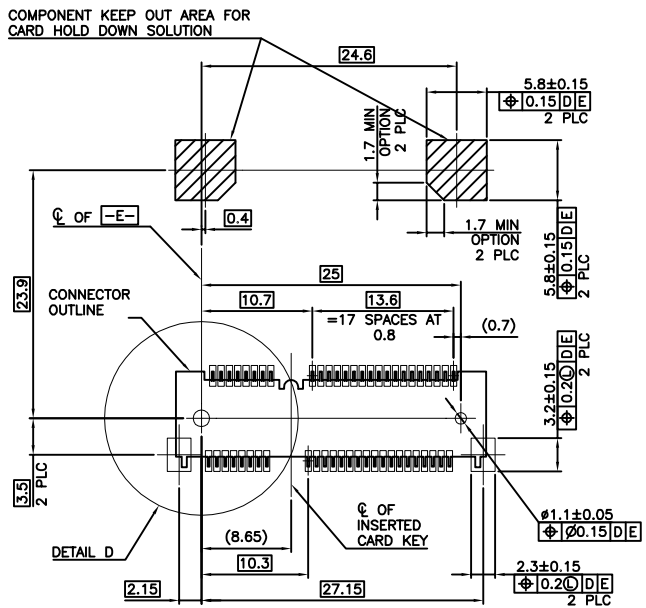
52 CONTACTS

PACKING OPTIONS
 R: TAPE & REEL

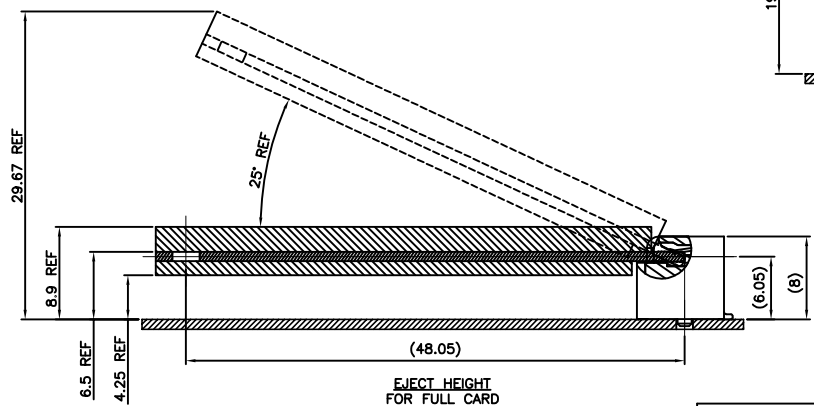
HALOGEN OPTIONS
 BLANK: HALOGEN
 HF: HALOGEN FREE

CONTACT AREA PLATING
 0: 30u" GOLD
 1: 10u" GOLD
 2: GOLD FLASH

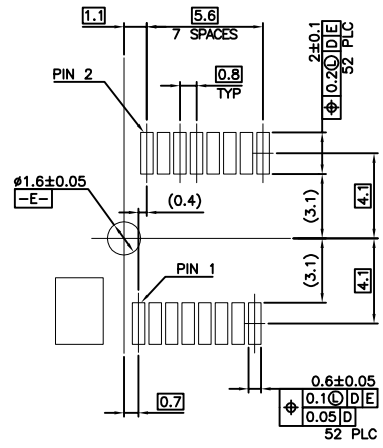
| | | | | TOLERANCE | | UMax 东莞市友贸实业有限公司 conn DONGGUAN UMAXCONN ENTERPRISE LIMITED | | TITLE: MINI PCI EXPRESS 8.0MM HEIGHT | | | | |
|-----|---------|--------------|-------------|-----------|--------|---|---------|---|-------|-------|--------|-----|
| | | | | LINEAR | ANGLES | | | PART NO. 91304-80-052RXXX | | | | |
| | | | | X±0.40 | X'± | APPD: Jason | MAT'L: | DWG NO. C-91304-80 | | | | |
| | | | | .X±0.30 | .X'± | CHKD: Schumi | FINISH: |  | UNITS | SCALE | SHEET | REV |
| 0 | ----- | Lei Songping | Jun,06,2019 | .XX±0.20 | .XX'± | DRWN: Lei Songping | Q'TY: | | MM | 1 : 1 | 2 OF 5 | 0 |
| REV | ECN NO. | NAME | DATE | .XXX±0.15 | .XXX'± | | | | | | | |



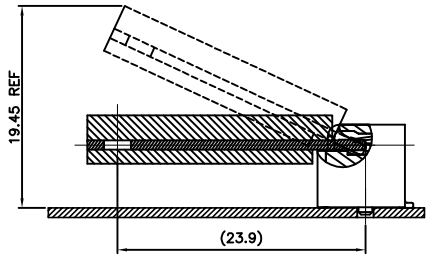
[-D-] IS THE TOP SURFACE OF PCB.
**RECOMMENDED P.C. BOARD PATTERN LAYOUT
 FOR HALF CARD CONNECTOR
 (TOP VIEW)**



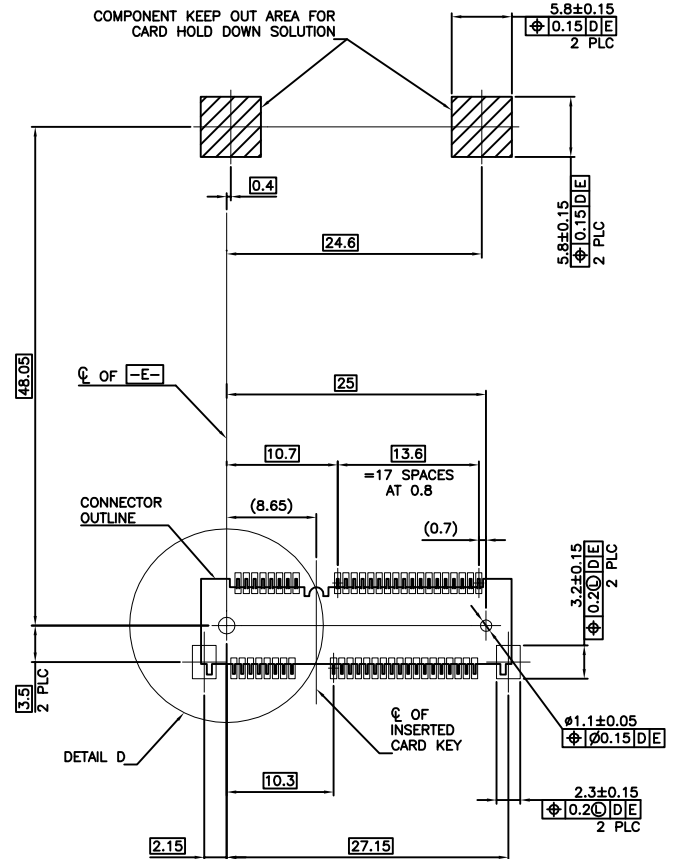
**EJECT HEIGHT
 FOR FULL CARD**



**DETAIL D
 SCALE 2:1**



**EJECT HEIGHT
 FOR HALF CARD**



[-D-] IS THE TOP SURFACE OF PCB.
**RECOMMENDED P.C. BOARD PATTERN LAYOUT
 FOR FULL CARD CONNECTOR
 (TOP VIEW)**

| | | | | TOLERANCE | |
|-----|---------|--------------|-------------|-----------|--------|
| | | | | LINEAR | ANGLES |
| | | | | X.± | X'.± |
| | | | | .X± | .X'± |
| 0 | ---- | Lei Songping | Jun,06,2019 | .XX± | .XX'± |
| REV | ECN NO. | NAME | DATE | .XXX± | .XXX'± |

UMax conn 东莞市友贸实业有限公司
 DONGGUAN UMAXCONN ENTERPRISE LIMITED

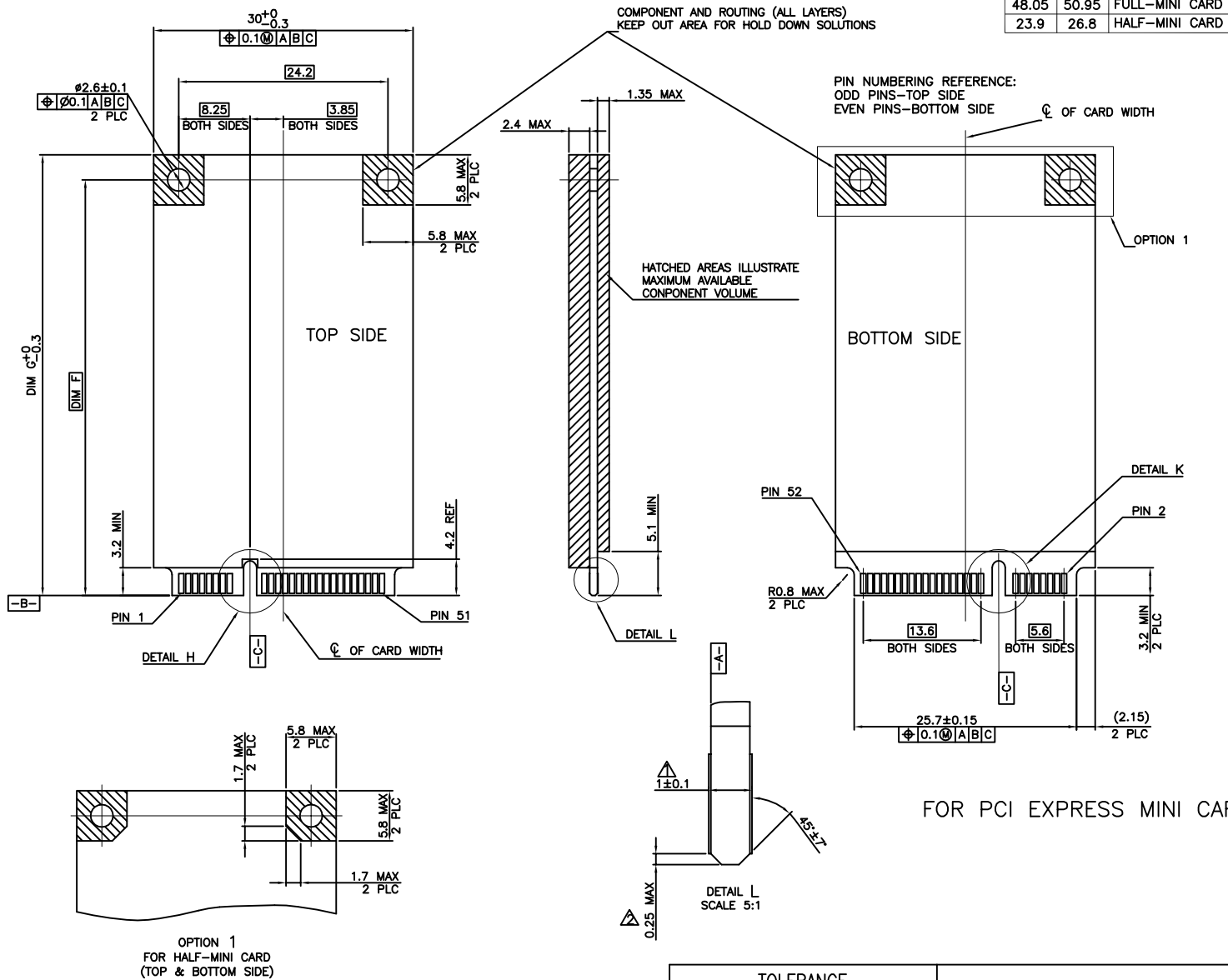
APPD: Jason MAT'L:
 CHKD: Schumi FINISH:
 DRWN: Lei Songping Q'TY:

TITLE: MINI PCI EXPRESS 8.0MM HEIGHT

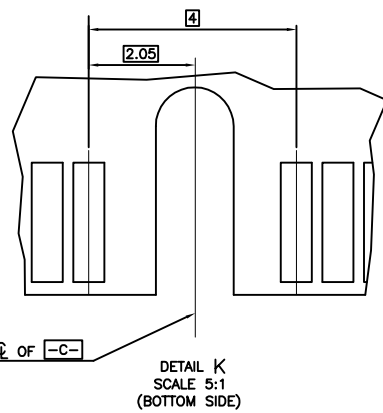
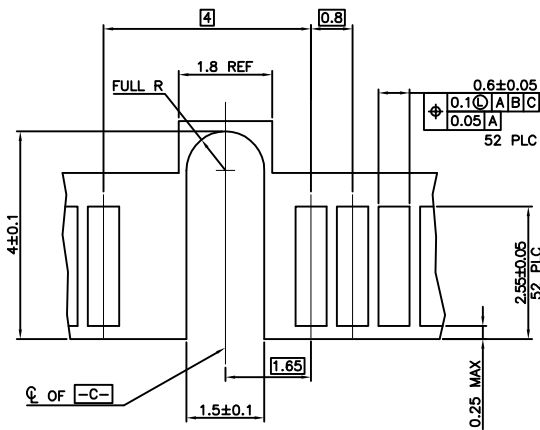
PART NO. 91304-80-052RXXX

DWG NO. C-91304-80

| | | | |
|-------|-------|--------|-----|
| UNITS | SCALE | SHEET | REV |
| MM | 1 : 1 | 3 OF 5 | 0 |



| | | |
|-------|-------|----------------|
| DIM F | DIM G | |
| 48.05 | 50.95 | FULL-MINI CARD |
| 23.9 | 26.8 | HALF-MINI CARD |



- NOTES:
- △ CARD THICKNESS APPLIES ACROSS TABS AND INCLUDES PLATING AND/OR METALLIZATION.
 - △ EDGE BEVEL MUST BE PRESENT AND FREE OF CUTTING BURRS FROM PCB AND CONTACT MATERIALS.

FOR PCI EXPRESS MINI CARD

OPTION 1
FOR HALF-MINI CARD
(TOP & BOTTOM SIDE)

| REV | ECN NO. | NAME | DATE | TOLERANCE | |
|-----|---------|--------------|-------------|-----------|--------|
| | | | | LINEAR | ANGLES |
| | | | | X.± | X'.± |
| | | | | .X± | .X'± |
| 0 | ----- | Lei Songping | Jun,06,2019 | .XX± | .XX'± |
| | | | | .XXX± | .XXX'± |

UMax conn 东莞市友贸实业有限公司
DONGGUAN UMAXCONN ENTERPRISE LIMITED

APPD: Jason MAT'L:

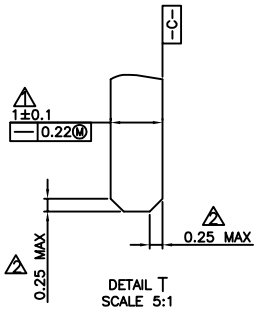
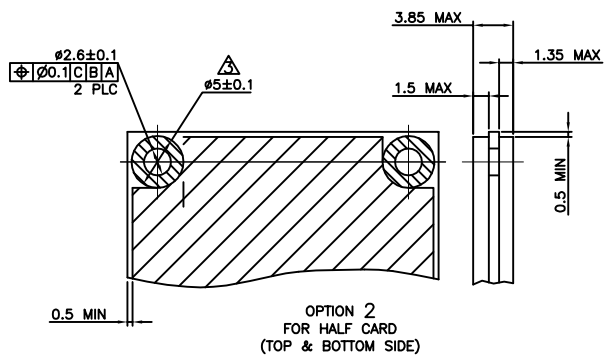
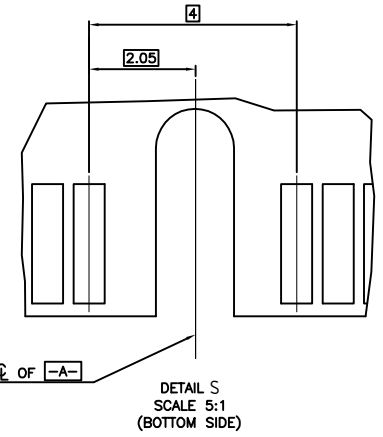
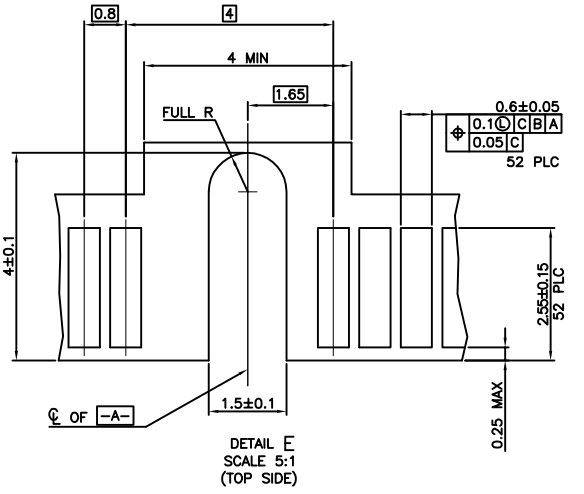
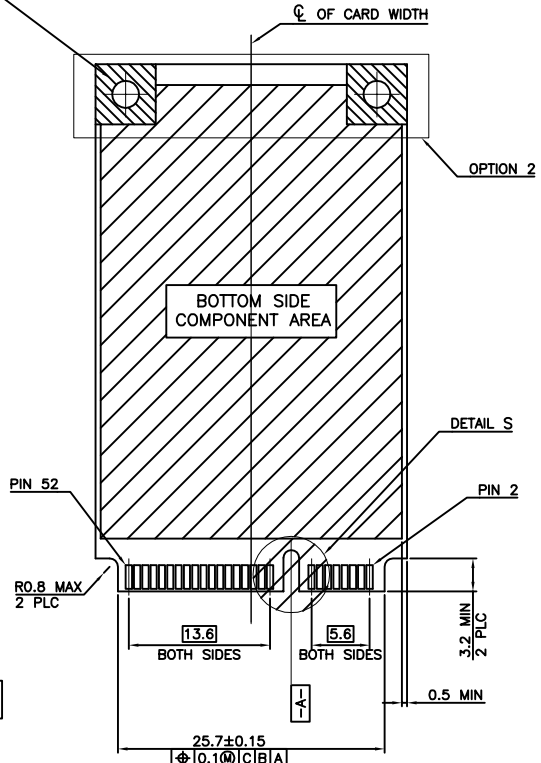
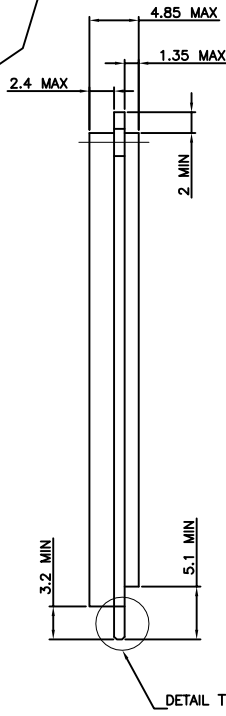
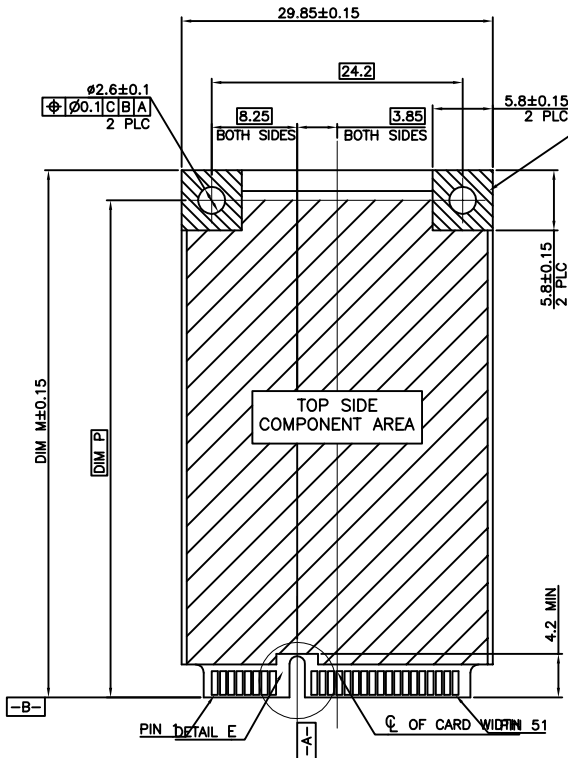
CHKD: Schumi FINISH:

DRWN: Lei Songping Q'TY:

| | | | |
|--------------------------------------|-------|--------|-----|
| TITLE: MINI PCI EXPRESS 8.0MM HEIGHT | | | |
| PART NO. 91304-80-052RXXX | | | |
| DWG NO. C-91304-80 | | | |
| UNITS | SCALE | SHEET | REV |
| MM | 1 : 1 | 4 OF 5 | 0 |

| DIM P | DIM M | |
|-------|-------|-----------|
| 48.05 | 50.8 | FULL CARD |
| 23.9 | 26.8 | HALF CARD |

COMPONENT AND ROUTING (ALL LAYERS)
KEEP OUT AREA FOR HOLD DOWN SOLUTIONS



- NOTES:
- ▲ CARD THICKNESS APPLIES ACROSS TABS AND INCLUDES PLATING AND/OR METALLIZATION.
 - ▲ EDGE BEVEL MUST BE PRESENT AND FREE OF CUTTING BURRS FROM PCB AND CONTACT MATERIALS.
 - ▲ COMPONENT AND ROUTING (TOP/BOTTOM LAYER) KEEP OUT AREA FOR HOLD DOWN SOLUTIONS.

FOR mSATA

OPTION 2 FOR HALF CARD (TOP & BOTTOM SIDE)

| REV | ECN NO. | NAME | DATE | TOLERANCE | | APPD: | MAT'L: | FINISH: | Q'TY: |
|-----|---------|--------------|-------------|-----------|--------|--------------|--------|---------|-------|
| | | | | LINEAR | ANGLES | | | | |
| 0 | ---- | Lei Songping | Jun,06,2019 | .XX± | .XX'± | Jason | | | |
| REV | ECN NO. | NAME | DATE | .XXX± | .XXX'± | Lei Songping | | | |

UMax conn 东莞市友贸实业有限公司
DONGGUAN UMAXCONN ENTERPRISE LIMITED

| | | | |
|--------------------------------------|-------|--------|-----|
| TITLE: MINI PCI EXPRESS 8.0MM HEIGHT | | | |
| PART NO. 91304-80-052RXXX | | | |
| DWG NO. C-91304-80 | | | |
| UNITS | SCALE | SHEET | REV |
| MM | 1 : 1 | 5 OF 5 | 0 |

CUSTOMER