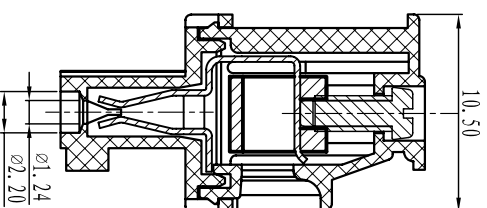
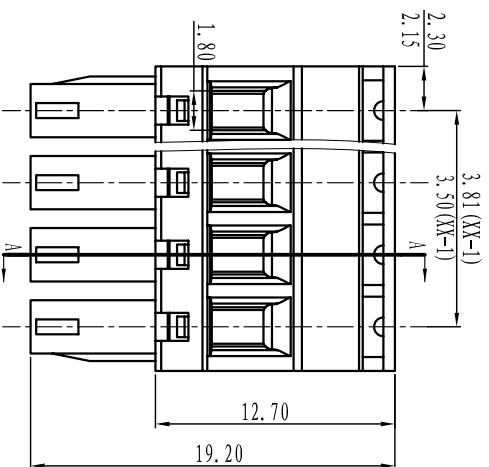
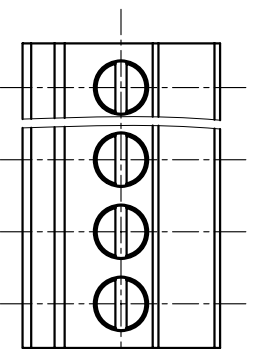


DORABO[®] Cixi Dibo Electronics Co.,LTD

产品规格书
product specification



SECTION A-A



电气性能/Electrical

参考标准/Standard: UL IEC
 额定电压/Rated voltage: 300V 250V
 额定电流/Rated current: 8A 10A
 接触电阻/Contact resistance: 20mΩ
 使用线径/Wire range: 28-16AWG 1.5mm²
 耐电压/Withstanding voltage: AC2000V/1Min
 绝缘电阻/Insulation resistance: 500MΩ/DC500V

机械性能/Mechanical

温度范围/Temp.Range: -40°C+105°C
 扭矩/Torque: 0.2Nm(1.71lb·in)
 剥线长度/Strip length: 6-7mm

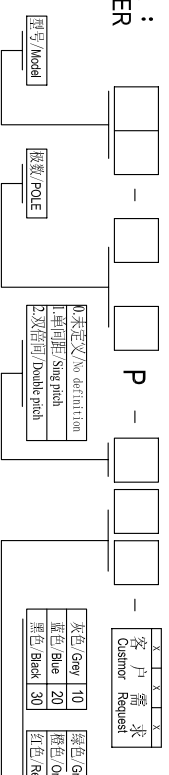
尺寸/Dimensions

间距/Pitch: 3.81mm, 3.50mm
 极数/Poles: 2P-24P

材质及电镀/Material

塑件/Housing: PA66, UL94V-0
 螺丝/Screws: M2, Steel Zinc plated
 方块/Wire guard: Brass, Ni plated
 夹子/Clamp: Phosphor bronze, Ni plated

订购方式: HOW TO ORDER



TOLERANCES EXCEPT AS NOTED

	linear dimension	fillet	chamfer	short angle sid	≡	□	∥	⊥
variable range	to 6 to 30 to 120 to 480	all	to 6 to 10 to 50 to 120	to 10 to 50 to 120	to all to 5 to 30 to 120	to 5 to 30 to 120	to 5 to 30 to 120	to 6 to 30 to 120
tolerance	±0.1 ±0.2 ±0.3 ±0.5 ±0.9	±0.2	±0.5 ±1	1° 30' 20'	0.5 0.025	0.06 0.12	0.12 0.4	

单位/UNITS mm 尺寸/SIZE A4 比例/SCALE

名称/NAME DB2EKA-3.81-XXP

