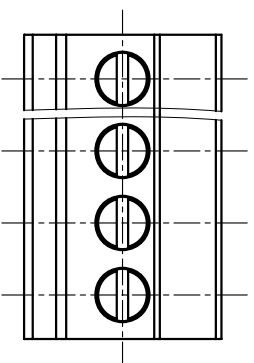
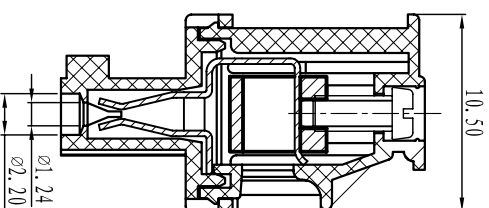
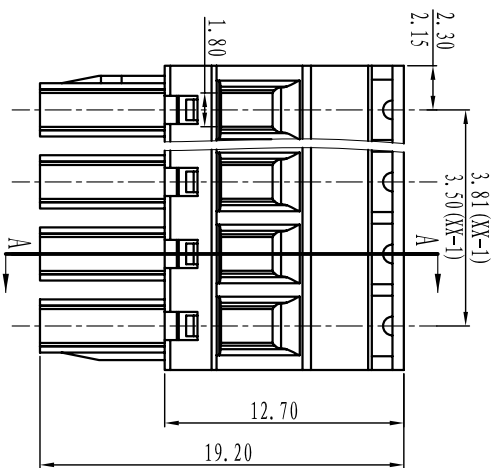


DORABO[®] Cixi Dibo Electronics Co.,LTD

产品规格书
product specification



电气性能/Electrical

参考标准/Standard: UL IEC
 额定电压/Rated voltage: 300V 250V
 额定电流/Rated current: 8A 10A
 接触电阻/Contact resistance: 20m Ω
 使用线径/Wire range: 28-16AWG 1.5mm²
 耐电压/Withstanding voltage: AC2000V/1Min
 绝缘电阻/Insulation resistance: 500M Ω /DC500V

机械性能/Mechanical

温度范围/Temp.Range: -40 $^{\circ}$ C⁺105 $^{\circ}$ C
 扭矩/Torque: 0.2Nm (1.71b`in)
 剥线长度/Strip length: 6-7mm

尺寸/Dimensions

间距/Pitch: 3.81mm, 3.50mm
 极数/Poles: 2P-24P

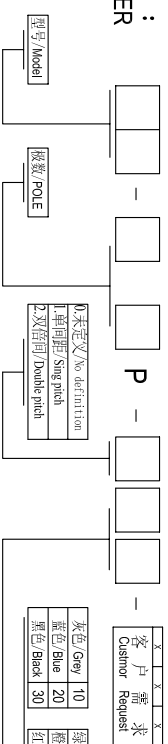
材质及电镀/Material

塑件/Housing: PA66, UL94V-0
 螺丝/Screws: M2, steel Zinc plated
 方块/Wire guard: Brass, Ni plated
 夹子/Clamp: Phosphor bronze, Ni plated

TOLERANCES EXCEPT AS NOTED

	linear dimension	filllet	chamfer	short angle sid	≡	—	□	//	⊥
variable range	6 to 30 30 to 120 120 to 480	all	6 to 10	10 to 50 50 to 120	all	5 to 30	30 to 120	120 to 120	
tolerance	±0.1 ±0.2 ±0.3 ±0.5 ±0.9	±0.2	±0.5 ±1	1 $^{\circ}$ 30'	0.5 0.025	0.06 0.12	0.12 0.4		

订购方式: HOW TO ORDER



灰色/Grey	10	绿色/Green	40	透明/Transparent	70
蓝色/Blue	20	橙色/Orange	50	黄色/Yellow	80
黑色/Black	30	红色/Red	60	白色/White	90

第一视角/FIRST ANGLE PROJECTION



单位/UNITS	mm	尺寸/SIZE	A4	比例/SCALE
Cixi Dibo Electronics Co.,LTD				

名称/NAME DB2EKB-381-XXP